



HOLSTEIN
 **PLAZA**

online heifer sale

Monday, December 8 through Thursday, December 18, 2014
www.holsteinplaza.com | Auction closes at 4:00 p.m. (EST)



photos © Han Hopman

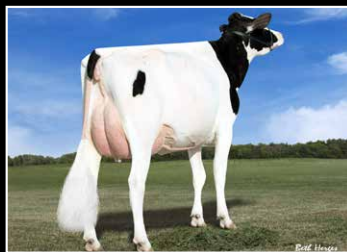


Sourcing Genetics for the World



Housing and Management Assistance in the U.S. for International buyers on heifers and cows

EXAMPLES OF DONOR COWS THAT AMS GENETICS IS WORKING WITH



Boek Hoogen

Des-Y-Gen Planet Silk *RC EX-90
GTPI+2091 +622NM\$ +2.06T

Working with several (grand-) daughters



Boek Hoogen

Larcrest Canto
GTPI+2534 +857NM\$ +3.51T

Tremendous daughter of Cale!



Pretty France

Cookiecutter MOM Hue VG-88-2YR
GTPI+2145 +459NM\$ +3.14T

Working with Hue and several daughters



Boek Hoogen

Vangoh Durham Treasure EX-96 3E
All-American 125,000 lb. Cow 2013

Highest scored (99-MS) udder cow in the U.S



CONTACT INFO

AMS Genetics International LLC
Mail address: PO Box 12 | Fairplay, MD 21733-0012 USA
Office Phone: +1 240-329-0169
Steve Mower Cell: +1 240-520-5906
Email: steve.mower@amsgenetics.com

SERVICES:

- Sourcing and locating embryo donors
- Herd visitation selection tours
- Contracting of donors
- Complete coordination of: embryo recovery, health certification and documentation, inland assembly and international shipment insurance
- Housing and management assistance for cattle housed in the United States

www.amsgenetics.com



www.holsteinplaza.com

ONLINE HEIFER SALE | DECEMBER 8-18, 2014

HOW DOES THE SALE WORK:

This is a traditional English auction, which starts low and allows bidders to place progressively higher bids. Each lot closes at staggering times (every 3 minutes) starting at 4:00 p.m. (EST) on Tuesday, September 9, and the highest bidder then wins the lot.

There are two ways of bidding - either directly through the internet (www.holsteinplaza.com) or by contacting one of the sale staff members listed. All bids are made in U.S. dollars.

When you place a bid, you enter the maximum amount you're willing to pay for the lot. The other bidders and the sale organization will not be able to see your maximum bid. Through this Proxy bidding system, the Holstein Plaza auction system will increase your bid to the next lowest price when another user bids on the same item. The proxy bidding process continues until your maximum bid amount is reached or the auction ends. Every bidder is bound to his bid. The sale is using the popcorn bid system/5-minute rule. Until that moment bids will be accepted.

All lots sell with reasonable starting bid. The bid increments will be as follows: < \$10,000 - \$250; \$10,000-\$20,000 - \$500; \$20,000-\$50,000 - \$1,000; \$50,000-\$100,000 - \$2,000 and > \$100,000 - \$5,000

Please refer to the terms and conditions in the back of your sale catalog for complete details.

sale managed by:



THE BUYING STOP FOR DAIRYMEN AROUND THE WORLD

P.O. Box 12, Fairplay, Maryland 21733-0012 USA

Ph. 240-329-0169 | Fax 240-469-4231

info@holsteinplaza.com | www.holsteinplaza.com

SALES STAFF:

HOLSTEIN PLAZA

Jennifer Dingbaum +1 320-250-2412

jennifer.dingbaum@holsteinplaza.com

Steve Mower +1 240-520-5906

steve.mower@amsgenetics.com

Hendrik Albada +1 240-520-1566

hendrik.albada@holsteinplaza.com

Ray LeBlanc +1 802-249-2155

Nick Raggi +1 443-762-8338

Declan Patten +1 815-697-2700

Paul Trapp +1 608-332-0079

Roger Turner +1 608-770-0012

Troy Yoder +1 478-244-2172

Australia

Richard Hull +61 419 951 810

EUROPE

Jan de Vries +31 (0)6 26250502

jandevries@diamond-genetics.nl

Arjan van der Vlis +31 (0)6 43985150

arjan@eurogenes.nl



MANAGEMENT/TRANSPORT:

All auction sales will be handled through AMS Genetics International. AMS will also assist as needed in transport coordination. Transport is the cost of the buyer and will not be allowed until payment has been made. For foreign buyers, AMS Genetics can assist with housing and management of purchases.

HOUSING CONTACT: Steve Mower 240-520-5906



DES-Y-GEN PLANET SILK-ET *RC EX-90 92-MS
DAM OF LOT 1

DYMENTHOLM SUNVIEW SASSY *RC VG-85-2YR
LOT 1

LOT 1

DYMENTHOLM SUNVIEW SASSY *RC

Holstein Plaza Contacts:

Steve Mower +1 240-520-5906
Jennifer Dingbaum +1 320-250-2412
Hendrik Albada +1 240-520-1566

USA 73016700 Born: 12-April-2012 Very Good-85 VG-MS @ 2-04
2-03 2x 121d 10473 3.7 385 3.3 344 inc. averages over 6 transfers per IVF session

USA	Milk	Fat	Prot	SCS	DPR	PL	FLC	UDC	PTAT	NM	GTPI
12/14	+1090	+34	+35	2.59	+2.5	+7.5	+1.30	+1.90	+2.04	+634	+2492

- No. 1 GTPI *RC Cow in the Breed 12/14
- No. 11 GTPI Cow on the Locator List 12/14
- Dam of the No. 1 GTPI Red Heifer, Josey-LLC Dker Spice-Red GTPI+2507

Generations Epic

11104016 *TV *TL *TY *TD
PTA +998M +23F +30P 98%R 12/14
PTA +449NM\$ +5.3PL 2.88SCS +2.3DPR
PTA +1.82T +1.51UDC +2.08FLC 96%R
GTPI +2296G

Des-Y-Gen Planet Silk-ET *RC *TY

106109413C Excellent-90 92-MS
GTPI+2166 +925M +70F +29P +1.10T
2-02 2x 365d 29990 4.5 1351 3.2 960
• #13 GTPI Red/*RC Cow, Locator List 12/14
• Dam of *RC Sympatico, Seneca and Stoic

Dam of:

Dymenthholm Sunview Sunday-ET *RC
Very Good-87-2YR VG-MS

- GTPI+2337 +2068M +75F +66P
- No. 2 GTPI *RC Cow on Locator List
- Dymenthholm Sunview Siren-ET *RC**
Very Good-87-2YR VG-MS
- GTPI+2125 NM\$+397 +1.23T
- No. 1 GTPI Red Cow on Locator List

Charlesdale Superstition

62065919 *TR *TV *TL *TY *TD
PTA +1465M +6F +42P 99%R 12/14
PTA +2.03T +2.03UDC +1.04FLC 88%R
GTPI +2159G

Tramilda-N Baxter Emily

139232811 Very Good-85-2YR
2-05 2x 282d 30946 4.2 1287 3.2 1001

Ensenada Taboo Planet

60597003 *TR *TV *TL *TY *TD
PTA +1706M +43F +49P 99%R 12/14
PTA +0.72T +0.39UDC +1.32FLC 99%R
GTPI +2155G

Gen-I-Beq Bolton Silence *RC

104862615 Very Good-85-CAN
2-04 2x 365d 30002 4.6 1391 3.6 1069

3rd thru 10th Dams

Gen-I-Beq Goldwyn Secret VG-87-CAN 8*
5-05 2x 365d 30573 4.5 1389 3.4 1038
Gen-I-Beq Durham Sherry VG-87-CAN 8*
5-02 2x 365d 40036 3.9 1574 3.2 1268
Glen Drummond Splendor
VG-86-2YR-CAN 38*
4-10 2x 314d 26510 4.2 1124 3.2 840
Glen Drummond Aero Flower
VG-88-CAN 18*
2-03 2x 326d 25622 4.0 1032 3.4 882
Glen Drummond Shower EX-CAN 14*
4-10 2x 365d 28583 4.8 1380 3.6 1016
Glen Drummond S C Jo Beth
EX-2E-CAN 7*
Life (6 Lacs): 141637 4.2 5994 3.2 3593
Glen Drummond Matt Beth VG-85 4*
11-10 2x 365d 25038 3.7 935
Life (5 Lacs): 105953 4.1 4295
Glen Drummond Marquis Beth VG-CAN
Life (8 Lacs): 112688 4.2 4766
Ferglynn Rag Apple Bertha VG-CAN 3*
7-00 2x 365d 27796 4.7 1303
Life (9 Lacs): 208857 4.0 8344

+2576 GTPI and +1715 MILK!



MIDAS-TOUCH MCCUT TISHA-ET
DAM OF LOT 2



MS WELCOME COLBY TAYA-ET VG-88 DOM
3RD DAM OF LOT 2

LOT 2

IHG DEFENDER TEX-ET

USA 3125201981

Born: 29-June-2014

Holstein Plaza Contacts:

Steve Mower +1 240-520-5906
Jennifer Dingbaum +1 320-250-2412
Hendrik Albada +1 240-520-1566

USA	Milk	Fat	Prot	SCS	DPR	PL	FLC	UDC	PTAT	NM	GTPI
12/14	+1715	+71	+58	2.79	+0.6	+3.7	+2.01	+1.96	+2.24	+691	+2576

S-S-I Mogul Defender-ET

3009554569 *TV *TL *TY *TD
PTA +950M +52F +37P 78%R 12/14
PTA +611NM\$ +4.5PL 2.74SCS +0.5DPR
PTA +2.70T +2.94UDC +3.26FLC 77%R
GTPI +2512G

Midas-Touch McCut Tisha-ET

71140758
GTPI +2419 +1675M +68F +58P +1.80T

Mountfield SSI Dcy Mogul

3006972816 *TR *TV *TL *TY *TD
PTA +1376M +78F +43P 96%R 12/14
PTA +2.84T +2.64UDC +3.39FLC 92%R
GTPI +2586G

Regan-BH-ALH M Dannah

66625308 Excellent-90
2-00 3x 365d 31970 3.7 1178 3.3 1045

De-Su Bkm McCutchen 1174-ET

69990138 Excellent-92 *TV *TL *TY *TD
PTA +1083M +47F +41P 86%R 12/14
PTA +2.56T +2.40UDC +1.96FLC 79%R
GTPI +2409G

Ms Welcome Iota Tacey-ET

3007677788 Very Good-88 @ 2-09
GTPI +2215 +1641M +45F +46P +1.54T
2-03 3x 365d 41950 3.6 1491 3.2 1340

3rd thru 11th Dams

Ms Welcome Colby Taya-ET VG-88 DOM *TY
1-10 3x 365d 41240 3.3 1357 3.2 1333

Clear-Echo FBI 1461-ET EX-90 GMD
2-00 3x 365d 36230 3.5 1261 3.1 1121

Clear-Echo 2635 Bol 1204-ET EX-91 GMD DOM
4-06 3x 365d 43950 3.7 1612 2.9 1295
Life: 1347d 137760 3.6 4964 3.0 4189

Clear-Echo Addisn Thea 635 VG-85 GMD DOM
1-11 2x 365d 33310 3.8 1272 3.1 1041

Clear-Echo Matt Thea 380-ET GP-83
2-10 2x 343d 27800 3.5 962 3.1 866

Clear-Echo Lake Thea-ET EX-90
4-03 3x 330d 33040 4.1 1343 2.9 954

Caernarvon Thor Shea-ET EX-90 EX-MS
4-04 2x 365d 30460 4.9 1499 3.2 975

Cabin-Run Mark Star-ET VG-86 GMD DOM
4-02 2x 365d 34260 3.9 1336 3.0 1029

Gay-Ridge Spirit Stacey VG-86 GMD DOM
5-04 2x 365d 33671 4.4 1493 2.8 939
Life: 2472d 162489 3.9 6538 3.4 4956



MIDAS-TOUCH MCCUT TISHA-ET
DAM OF LOT 3

MS WELCOME IOTA TACEY-ET VG-88-2YR
2ND DAM OF LOT 3

LOT 3

IHG MAIN E TYRANT

USA 3125613796

Born: 20-September-2014

Holstein Plaza Contacts:

Steve Mower +1 240-520-5906
Jennifer Dingbaum +1 320-250-2412
Hendrik Albada +1 240-520-1566

USA	Milk	Fat	Prot	SCS	DPR	PL	FLC	UDC	PTAT	NM	GTPI
12/14	+1736	+70	+59	2.91	+1.3	+3.4	+1.91	+1.35	+2.14	+643	+2521

Stantons Main Event

11596146C
PTA +1081M +60F +41P 78%R 12/14
PTA +715NM\$ +6.5PL 2.77SCS +3.0DPR
PTA +2.55T +2.25UDC +2.88FLC 76%R
GTPI +2635G

Midas-Touch McCut Tisha-ET

71140758
GTPI +2419 +1675M +68F +58P +1.80T

Mountfield SSI Dcy Mogul

3006972816 *TR *TV *TL *TY *TD
PTA +1376M +78F +43P 96%R 12/14
PTA +2.84T +2.64UDC +3.39FLC 92%R
GTPI +2586G

Stantons Super Elda

11084001C Good Plus-83
2-01 3x 365d 31343 4.1 1274 3.3 1038

De-Su Bkm McCutchen 1174-ET

69990138 Excellent-92 *TV *TL *TY *TD
PTA +1083M +47F +41P 86%R 12/14
PTA +2.56T +2.40UDC +1.96FLC 79%R
GTPI +2409G

Ms Welcome Iota Tacey-ET

3007677788 Very Good-88 @ 2-09
GTPI +2215 +1641M +45F +46P +1.54T
2-03 3x 365d 41950 3.6 1491 3.2 1340

3rd thru 11th Dams

Ms Welcome Colby Taya-ET VG-88 DOM *TY
1-10 3x 365d 41240 3.3 1357 3.2 1333

Clear-Echo FBI 1461-ET EX-90 GMD
2-00 3x 365d 36230 3.5 1261 3.1 1121

Clear-Echo 2635 Bol 1204-ET EX-91 GMD DOM
4-06 3x 365d 43950 3.7 1612 2.9 1295
Life: 1347d 137760 3.6 4964 3.0 4189

Clear-Echo Addisn Thea 635 VG-85 GMD DOM
1-11 2x 365d 33310 3.8 1272 3.1 1041

Clear-Echo Matt Thea 380-ET GP-83
2-10 2x 343d 27800 3.5 962 3.1 866

Clear-Echo Lake Thea-ET EX-90
4-03 3x 330d 33040 4.1 1343 2.9 954

Caernarvon Thor Shea-ET EX-90 EX-MS
4-04 2x 365d 30460 4.9 1499 3.2 975

Cabin-Run Mark Star-ET VG-86 GMD DOM
4-02 2x 365d 34260 3.9 1336 3.0 1029

Gay-Ridge Spirit Stacey VG-86 GMD DOM
5-04 2x 365d 33671 4.4 1493 2.8 939
Life: 2472d 162489 3.9 6538 3.4 4956



BRANDT-VIEW BWM WENDY VG-85-2YR
4TH DAM OF LOT 4

LOT 4

PINE-TREE 5660 HALO 6386 *PO

USA 72954485

Born: 09-August-2014

Holstein Plaza Contacts:

Steve Mower +1 240-520-5906
Jennifer Dingbaum +1 320-250-2412
Hendrik Albada +1 240-520-1566

USA	Milk	Fat	Prot	SCS	DPR	PL	FLC	UDC	PTAT	NM	GTPI
12/14	+672	+35	+16	2.54	+4.2	+7.6	+0.27	+1.40	+1.28	+588	+2379

Cookiecutter Petron Halogen

3008710387 *TV *TL *TY *TD
PTA +588M +36F +24P 77%R 12/14
PTA +7.6PL 2.50SCS +5.6DPR
PTA +2.13T +2.44UDC +0.98FLC 76%R
GTPI +2607G

Pine-Tree 4890 Casta 5660 *PC *TY

71859238 Born: February 19, 2013
GTPI+2291 +582M +31F +24P +1.39T
• Already Polled Offspring over +2500G!

Welcome Super Petrone-ET

69207641 *TR *TV *TL *TY *TD
PTA +624M +32F +13P 92%R 12/14
PTA +1.39T +1.50UDC +1.37FLC 85%R
GTPI +2361G

Cookiecutter MOM Halo-ET

3007069733 Very Good-88 EX-MS @ 2-09
2-00 3x 365d 35410 5.2 1832 3.5 1241

Pine-Tree Castaway 2711-ET

69169793 *BY
PTA +79M +27F +12P 78%R 12/14
PTA +1.17T +1.52UDC +1.73FLC 77%R
GTPI +2345G

Pine-Tree 1369 Codie 4890 *PO

69804654 Very Good-85-2YR VG-MS
1-09 3x 305d 28770 4.0 1151 3.2 912

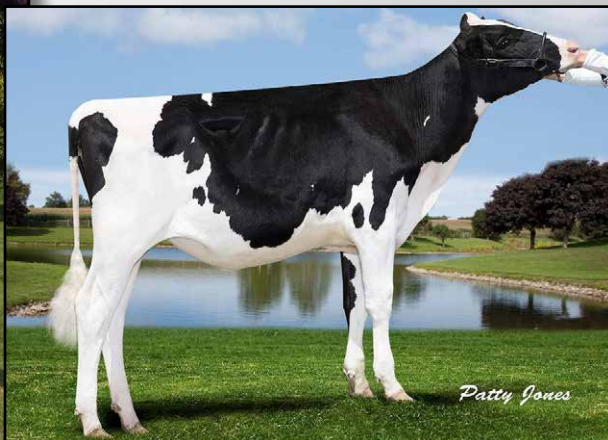
3rd thru 7th Dams

Pine-Tree Oman Wind 1369-ET GP-80
4-11 3x 305d 38790 2.8 1069 3.1 1206
Brandt-View BWM Wendy VG-85-2YR
2-01 3x 365d 37820 3.2 1219 2.9 1089
Da-Net Patron Pansy-ET
VG-87 GMD DOM
2-00 3x 365d 35110 4.3 1506 3.3 1164
Da-Net Angie Leadman EX-90 GMD DOM
6-05 3x 365d 46151 3.5 1598 3.2 1486
Life: (5 Lacs) 262859 3.9 10212 3.4 9065
Da-Net Bambi Steady VG-87 GMD DOM
5-02 3x 365d 30024 3.9 1184 3.2 948

Buy Mogul's next great one, Backed by the BARBIES!



COYNE-MCGARR BEWILDERED VG-86 DOM
MATERNAL SISTER TO OF LOT 5



COYNE-FARMS-I WINSOME
SELLS AS LOT 5

LOT 5

COYNE-FARMS-I WINSOME

Holstein Plaza Contacts:

Steve Mower +1 240-520-5906
Jennifer Dingbaum +1 320-250-2412
Hendrik Albada +1 240-520-1566

CAN 11128433

Born: 25-January-2013

Due February 2015 to Capital Gain

USA	Milk	Fat	Prot	SCS	DPR	PL	FLC	UDC	PTAT	NM	GTPI
12/14	+1247	+70	+42	2.73	-0.8	+2.4	+2.94	+1.76	+2.48	+537	+2378

Mountfield SSI Dcy Mogul

3006972816 *TR *TV *TL *TY *TD
PTA +1376M +78F +43P 96%R 12/14
PTA +5.1PL 2.86SCS +0.1DPR 5.5%DCE
PTA +2.84T +2.64UDC +3.39FLC 92%R
GTPI +2586G

R-E-W Daz Bewitched-ET

139825437 Very Good-88 DOM
GTPI+1940 +289M +19F +18P +2.20T
2-03 2x 365d 35920 4.0 1440 3.5 1254

Coyne-Farms Dorcy-ET

139005002 *BY *TV *TL
PTA +1387M +33F +38P 99%R 12/14
PTA +2.21T +2.52UDC +2.31FLC 98%R
GTPI +2339G

Mountfield Marsh Maxine-ET

62784081 Very Good-88 EX-MS DOM
2-03 2x 159d 14320 4.3 611 3.4 481

Picston Shottle-ET

GBR 598172 EX-95 GM 12/11 *TV *TL *TY
PTA +519M +28F +12P 99%R 12/14
PTA +1.26T +0.88UDC +0.77FLC
GTPI +1916G

Regancrest G Bedazzle-ET

62496924 Excellent-91 EEVEV DOM
4-04 2x 365d 44260 3.7 1628 3.2 1416
1-10 2x 365d 32630 4.5 1455 3.0 974
sired by: Braedale Goldwyn

3rd thru 9th Dams

Regancrest-PR Barbie-ET

EX-92 EEEEE GMD DOM
2-06 2x 365d 31690 3.9 1237 3.1 990
• HM All-American Junior 3-Yr Old 2004
• Former #1 Type Cow

Regancrest Juror Brina-ET EX-92 GMD

4-04 2x 365d 40640 3.6 1478 2.8 1140
• Member Nom AA Best 3 Females 2000
• Res Grand Champ Iowa State Show 2000

Regancrest Aerostar Bert-ET

EX-90 GMD DOM
5-02 2x 365d 37790 3.6 1357 3.0 1143
Life: 1305d 109350 3.7 4031 3.1 3350

Regancrest Mark Chairman Bea

EX-91 2E GMD
7-09 2x 365d 33630 3.8 1276 2.9 988
Life: 2036d 140130 4.1 5711 3.1 4350

Regancrest Board Chairman Bea EX-90

5-09 2x 365d 26010 4.1 1059 3.2 835

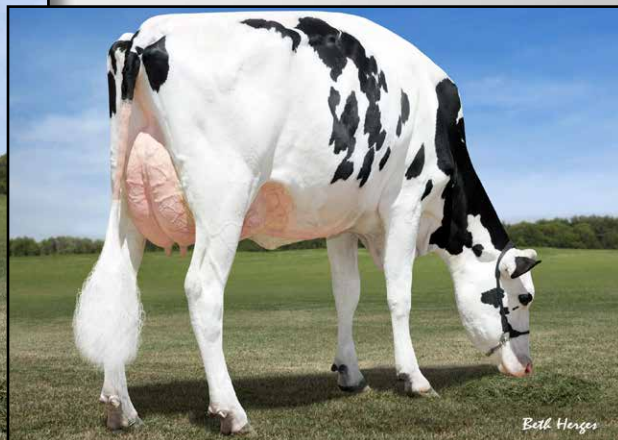
Regancrest Apache Standout Bea VG-86

4-10 2x 320d 19070 4.0 766

Life: 2432d 131940 3.6 4744

Regancrest Standout Bertrand VG-85

4-01 2x 355d 17460 3.3 571



DES-Y-GEN PLANET SILK-ET *RC EX-90 92-MS
2ND DAM OF LOT 6

DYMENTHOLM SUNVIEW SUNDAY-ET VG-87
MATERNAL SISTER TO LOT 6

LOT 6

JOSEY-LLC SMURF-RED-ET

USA 73615379

Born: 16-September-2014

Holstein Plaza Contacts:

Steve Mower +1 240-520-5906
Jennifer Dingbaum +1 320-250-2412
Hendrik Albada +1 240-520-1566

USA	Milk	Fat	Prot	SCS	DPR	PL	FLC	UDC	PTAT	NM	GTPI
12/14	+425	+19	+26	2.63	+2.6	+4.8	+1.84	+2.26	+1.94	+449	+2332

Ladys-Manor Olympian *RC

71592946 *TV *TL *TY *TD
PTA +836M +9F +35P 76%R 12/14
PTA +503NM\$ +5.9PL 2.63SCS +2.8DPR
PTA +1.95T +2.49UDC +1.38FLC 76%R
GTPI +2402G

Dymentholm Sunview Shalom *RC

11425888 Very Good-85-2YR
GTPI+2068 +1179M +70F +36P +0.96T
2-02 2x 187d 18294 3.8 691 3.2 583

Maternal sister to Shalom

Dymentholm Sunview Sassy-ET *RC

Very Good-85-2YR VG-MS
GTPI+92 +634NM\$ +2.04T

• No. 1 GTPI *RC Cow on Locator List

Dymentholm Sunview Sunday-ET *RC

Very Good-87-2YR VG-MS
GTPI+2337 +2068M +75F +66P

• No. 2 GTPI *RC Cow on Locator List

Hunsberger Alchemy-ET *RC

69080973 *RC *TV *TL *TY *TD
PTA +158M -11F +18P 95%R 12/14
PTA +1.34T +1.55UDC -0.06FLC 93%R
GTPI +2050G

Ladys-Manor Dorcy Oda

69547657 Very Good-88 EX-MS @ 2-11
2-00 2x 365d 31930 4.1 1319 3.3 1055

VA -Early-Dawn Sudan CRI -ET

62768990
PTA +1134M +79F +46P 98%R 12/14
PTA +1.05T +0.42UDC +1.24FLC 96%R
GTPI +2147G

Des-Y-Gen Planet Silk-ET *RC *TY

106109413C Excellent-90 EX-MS
GTPI+2166 +925M +70F +29P +1.10T
2-02 2x 365d 29990 4.5 1351 3.4 1017
• Nominated HI Global Red Impact Cow
• Dam of *RC Sympatico, Seneca and Stoic

3rd thru 11th Dams

Gen-I-Beq Bolton Silence *RC VG-85-CAN

2-04 2x 365d 30002 4.6 1391 3.6 1069

Gen-I-Beq Goldwyn Secret VG-87-CAN 8*

5-05 2x 365d 30573 4.5 1389 3.4 1038

Gen-I-Beq Durham Sherry VG-87-CAN 8*

5-02 2x 365d 40036 3.9 1574 3.2 1268

Glen Drummond Splendor

VG-86-2YR-CAN 38*

4-10 2x 314d 26510 4.2 1124 3.2 840

Glen Drummond Aero Flower

VG-88-CAN 18*

2-03 2x 326d 25622 4.0 1032 3.4 882

Glen Drummond Shower EX-CAN 14*

4-10 2x 365d 28583 4.8 1380 3.6 1016

Glen Drummond S C Jo Beth

EX-2E-CAN 7*

Life (6 Lacs): 141637 4.2 5994 3.2 3593

Glen Drummond Matt Beth VG-85 4*

11-10 2x 365d 25038 3.7 935

Life (5 Lacs): 105953 4.1 4295

Glen Drummond Marquis Beth VG-CAN

Life (8 Lacs): 112688 4.2 4766

Ferglynn Rag Apple Bertha VG-CAN 3*

7-00 2x 365d 27796 4.7 1303

Life (9 Lacs): 208857 4.0 8344



ROSEDALE LIBERTY EX-93 EEEEE 2E
SELLS AS LOT 7

ROSEDALE LEXINGTON-ET EX-92 2E
FULL SISTER TO LOT 7

LOT 7

ROSEDALE LIBERTY-ET

Holstein Plaza Contacts:
Steve Mower +1 240-520-5906
Jennifer Dingbaum +1 320-250-2412

USA 139319103 Born: 09-June-2008
2-00 2x 365d 22670 4.0 901 3.3 754
3-08 2x 365d 35490 4.5 1595 3.3 1161
5-03 2x 365d 33469 4.1 1388 3.3 1106

Excellent-93 EEEEE 2E
DONOR DAM

Braedale Goldwyn

10705608 GP-CAN EX'05 GM 8/08 *TL
PTA -353M +15F +1P 99%R 12/14
PTA +113NM\$ -1.1PL 2.75SCS
PTA +1.81T +1.51UDC +1.55FLC
GTPI +1874G

Rosedale Lexi-ET

135177644 Very Good-89 EX-MS
2-02 2x 365d 26800 5.1 1356 3.1 837
• HM All-American Spring Yearling 2005
• 1st Jr 3-Year-Old, Midwest Spring Nat'l 2007
• Res Int Champ, Midwest Spring Nat'l 2007

Shoremar James

5902195C GP-81-CAN GM 2/04 *TV *TL
PTA -956M -9F -8P 99%R 12/14
PTA -.34T -.32UDC -.56FLC
GTPI +1217G

Braedale Baler Twine

6860888C Very Good-86-CAN 29*
2-01 2x 365d 30906 4.9 1521 3.4 1052

Silky Coustea-ET

6215489 *TV *TL *TY
PTA -430M +7F -25P 99%R 8/14
PTA +0.97T +1.08UDC -.46FLC
GTPI +1093G

Rosedale Lea-Ann-ET *RC

15785985 Excellent-93 EEEEE 2E GMD
4-08 3x 365d 39370 3.4 1325 3.1 1202
2-06 3x 365d 35200 3.3 1165 3.1 1094
6-08 2x 305d 27910 4.2 1185 3.0 841
Life: 1345d 120420 3.6 4315 3.2 3795

Full sister to Liberty

Rosedale Lexington-ET EX-95 2E

4-11 2x 365d 42780 4.6 1973 3.2 1370
• All-American 5-Year-Old 2013
• Nom All-American Jr 3-Year-Old 2011
• Res All-American Jr 2-Year-Old 2010

3rd thru 6th Dams

Stookey Elm Park Blackrose-ET

EX-96 3E GMD DOM
5-03 3x 365d 42230 4.6 1939 3.4 1432
Life: 1609d 149880 4.4 6621 3.3 4940
• AA & All-Canadian Jr 2-Yr Old 1992
• AA & All-Canadian Jr 3-Yr Old 1993
• Reserve All-American 5-Yr Old 1995
• Reserve All-American Aged Cow 1997

Nandette TT Speckle-Red EX-93 DOM

4-08 2x 365d 25290 4.7 1195
• All-American R&W 2-Year Old, 1981
• All-American R&W Aged Cow, 1984
Nandette Riley Nana-Red VG-87
7-01 2x 365d 20070 3.4 677 3.1 621
Nandette Bootmake Gale VG-89
5-07 2x 305d 22300 4.0 896
Life: 2181d 129410 3.8 4916



MS DURCHAN LADY ALLANA EX-95 95-MS
4TH DAM OF LOT 8

LADYS-MANOR ALLANAS DORA EX-92 DOM
3RD DAM OF LOT 8

LOT 8

DYMENTHOLM M E DAYLIGHT

USA 74091184

Born: 20-October-2014

Holstein Plaza Contacts:

Steve Mower +1 240-520-5906
Jennifer Dingbaum +1 320-250-2412
Hendrik Albada +1 240-520-1566

• Please note that these are PRELIMINARY figures

USA	Milk	Fat	Prot	SCS	DPR	PL	FLC	UDC	PTAT	NM	GTPI
12/14	+722	+43	+31	2.94	+2.3	+5.2	+1.81	+2.68	+2.62	+634	+2479

Stantons Main Event

11596146C
PTA +1081M +60F +41P 78%R 12/14
PTA +715NM\$ +6.5PL 2.77SCS +3.0DPR
PTA +2.55T +2.25UDC +2.88FLC 76%R
GTPI +2635G

EDG Dominique Mccut Diva

72437746 Born: April 25, 2013
GTPI+2332 +758M +31F +27P +2.67T
• Bred heifer due in April

Mountfield SSI Dcy Mogul

3006972816 *TR *TV *TL *TY *TD
PTA +1376M +78F +43P 96%R 12/14
PTA +2.84T +2.64UDC +3.39FLC 92%R
GTPI +2586G

Stantons Super Elda

11084001C Good Plus-83
2-01 3x 365d 31343 4.1 1274 3.3 1038

De-Su Bkm McCutchen 1174-ET

69990138 Excellent-92 *TV *TL *TY *TD
PTA +1083M +47F +41P 86%R 12/14
PTA +2.56T +2.40UDC +1.96FLC 79%R
GTPI +2409G

Ladys-Manor Dominique-ET

70189445 Good Plus-83
GTPI+2201 +307M +41F +12P +2.52T

3rd thru 13th Dams

Ladys-Manor Allanas Dora EX-93 DOM
3-07 2x 365d 40640 4.4 1780 3.3 1360
Ms Durchan Lady Allana EX-95 2E EEEEE
3-07 2x 365d 40850 4.4 1793 3.3 1349
Life: 1351d 126420 4.2 5362 3.4 4305
• All-American Sr Milking Yrlg 2007
Coldsprings Dur Chan 109 EX-95 2E DOM
6-04 2x 365d 41850 4.3 1784 3.3 1371
Life: 1423d 130510 3.6 4695 3.3 5064
• Res All-American Aged Cow 2007
• HM All-American 5-Year-Old 2005
• All-American 4-Year-Old 2004
C Bermaska Starbuck Chancel VG-89 DOM
2-07 2x 365d 28400 4.3 1230 3.5 999
• All-American Senior 2-Year-Old 1992
• All-American Senior Yearling Heifer 1991
Donaco Enhancer Cheryl VG-87-CAN
7-02 2x 305d 21462 4.8 1021 3.5 743
Danaco Apache Chanda VG-86
4-11 2x 322d 19160 4.3 829 3.5 670
Danaco Elevation Candace VG-86
Life: 2564d 185599 3.7 6834
Davis-Farm Maple Cindy EX-90 GMD
5-03 2x 365d 23849 3.7 871
Davis-Farm Heritage Candace EX-90 EEEV
2-06 2x 305d 12060 3.7 445
Davis-Farm Model Lena VG-85
4-02 2x 305d 14060 4.1 582
Maview Candace Pilot EX-91 VEEE
Life: 3139d 151504 3.9 5825



MS DURCHAN LADY ALLANA EX-95 95-MS
4TH DAM OF LOT 9

LADYS-MANOR ALLANAS DORA EX-92 DOM
3RD DAM OF LOT 9

LOT 9

DYMENTHOLM M E DAYBREAK

USA 74091184

Born: 23-October-2014

Holstein Plaza Contacts:

Steve Mower +1 240-520-5906
Jennifer Dingbaum +1 320-250-2412
Hendrik Albada +1 240-520-1566

• Please note that these are PRELIMINARY figures

USA	Milk	Fat	Prot	SCS	DPR	PL	FLC	UDC	PTAT	NM	GTPI
12/14	+795	+55	+35	2.99	+1.5	+4.0	+2.32	+2.31	+2.74	+543	+2453

Stantons Main Event

11596146C
PTA +1081M +60F +41P 78%R 12/14
PTA +715NM\$ +6.5PL 2.77SCS +3.0DPR
PTA +2.55T +2.25UDC +2.88FLC 76%R
GTPI +2635G

EDG Dominique Mccut Diva

72437746 Born: April 25, 2013
GTPI+2332 +758M +31F +27P +2.67T
• Bred heifer due in April

Mountfield SSI Dcy Mogul

3006972816 *TR *TV *TL *TY *TD
PTA +1376M +78F +43P 96%R 12/14
PTA +2.84T +2.64UDC +3.39FLC 92%R
GTPI +2586G

Stantons Super Elda

11084001C Good Plus-83
2-01 3x 365d 31343 4.1 1274 3.3 1038

De-Su Bkm McCutchen 1174-ET

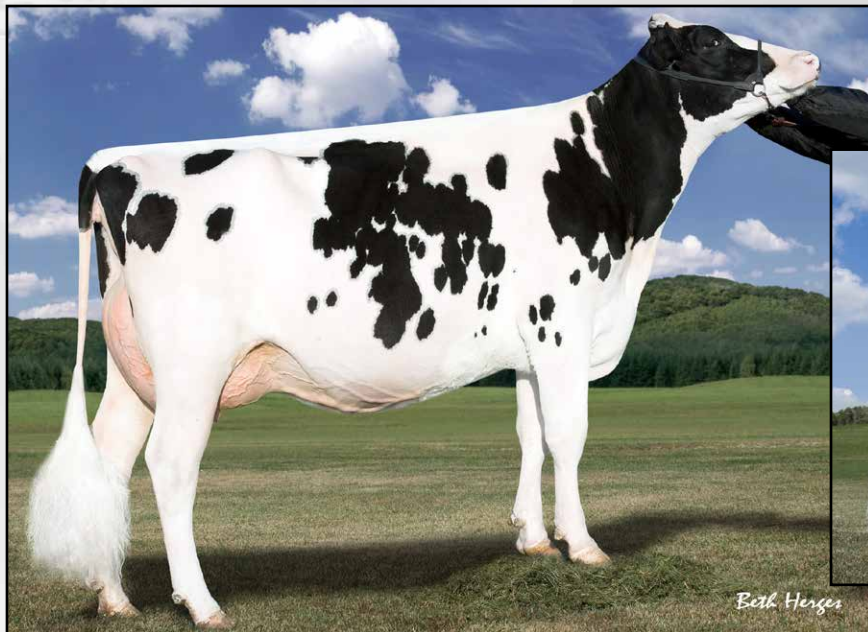
69990138 Excellent-92 *TV *TL *TY *TD
PTA +1083M +47F +41P 86%R 12/14
PTA +2.56T +2.40UDC +1.96FLC 79%R
GTPI +2409G

Ladys-Manor Dominique-ET

70189445 Good Plus-83
GTPI+2201 +307M +41F +12P +2.52T

3rd thru 13th Dams

Ladys-Manor Allanas Dora EX-93 DOM
3-07 2x 365d 40640 4.4 1780 3.3 1360
Ms Durchan Lady Allana EX-95 2E EEEEE
3-07 2x 365d 40850 4.4 1793 3.3 1349
Life: 1351d 126420 4.2 5362 3.4 4305
• All-American Sr Milking Yrlg 2007
Coldsprings Dur Chan 109 EX-95 2E DOM
6-04 2x 365d 41850 4.3 1784 3.3 1371
Life: 1423d 130510 3.6 4695 3.3 5064
• Res All-American Aged Cow 2007
• HM All-American 5-Year-Old 2005
• All-American 4-Year-Old 2004
C Bermaska Starbuck Chancel VG-89 DOM
2-07 2x 365d 28400 4.3 1230 3.5 999
• All-American Senior 2-Year-Old 1992
• All-American Senior Yearling Heifer 1991
Donaco Enhancer Cheryl VG-87-CAN
7-02 2x 305d 21462 4.8 1021 3.5 743
Danaco Apache Chanda VG-86
4-11 2x 322d 19160 4.3 829 3.5 670
Danaco Elevation Candace VG-86
Life: 2564d 185599 3.7 6834
Davis-Farm Maple Cindy EX-90 GMD
5-03 2x 365d 23849 3.7 871
Davis-Farm Heritage Candace EX-90 EEEV
2-06 2x 305d 12060 3.7 445
Davis-Farm Model Lena VG-85
4-02 2x 305d 14060 4.1 582
Maview Candace Pilot EX-91 VEEE
Life: 3139d 151504 3.9 5825



LARCREST CRIMSON-ET EX-92 GMD DOM
2ND DAM OF LOT 10



LARCREST CASE-ETS VG-86 VG-MS DOM
DAM OF LOT 10

LOT 10

MS TTM JETSET CLOUD

USA 3013072483

Born: 30-March-2014

Holstein Plaza Contacts:

Steve Mower +1 240-520-5906
Jennifer Dingbaum +1 320-250-2412
Hendrik Albada +1 240-520-156

USA	Milk	Fat	Prot	SCS	DPR	PL	FLC	UDC	PTAT	NM	GTPI
12/14	+1117	+77	+38	2.82	+2.7	+5.7	+0.00	+0.90	+0.94	+686	+2437

Coyne-Farms Jetset

70801849 *TY
PTA +982M +59F +34P 77%R 12/14
PTA +4.1PL 2.75SCS +3.8DPR 3.9%DCE
PTA +1.10T +0.76UDC +0.99FLC 76%R
GTPI +2421G

Larcrest Case-ETS

56264512 Very Good-86 VG-MS DOM
GTPI+2318 +1163M +62F +48P +1.16T
2-06 2x 365d 37550 3.7 1398 3.6 1361

Dam of: **Farnear-TBR-BH Caite** GTPI+2447
• High seller Farnear Focus Sale \$185,000

Mabri Facebook

10847042 *TY *TD
PTA +1281M +80F +47P 97%R 12/14
PTA +1.51T +0.92UDC +0.52FLC 96%R
GTPI +2366G

Coyne-Farms Freddie Jill

68677598 Very Good-85-2YR
2-00 2x 286d 27847 3.4 917 3.0 833

Ensenada Taboo Planet-ET

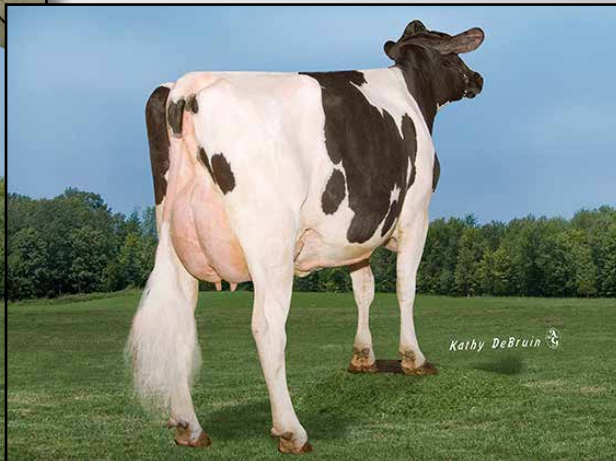
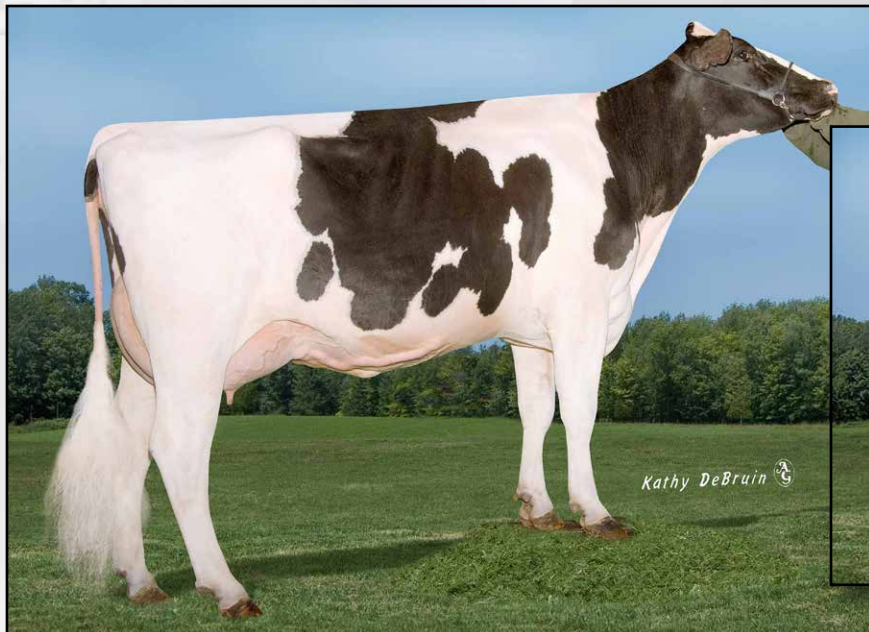
60597003 EX-90 GM 12/11 *TR *TV *TL *TY
PTA +1706M +43F +49P 99%R 12/14
PTA +0.72T +0.39UDC -1.32FLC
GTPI +2155G

Larcrest Crimson-ET

53452457 Excellent-92 GMD DOM
GTPI+2242 -94M +54F +32P +1.73T
5-02 2x 365d 46390 5.3 2448 3.7 1708
2-02 2x 365d 36060 4.7 1710 3.7 1351
Life: 1364d 120680 4.9 5947 3.8 4597

3rd thru 7th Dams

Larcrest Cosmopolitan VG-87 GMD DOM
2-04 2x 365d 30930 4.1 1261 3.6 1119
Larcrest Oside Champagne-TW
EX-90 GMD DOM
2-03 2x 365d 29110 4.5 1322 3.7 1077
• 17 sons in A.I. worldwide
Larcrest Juror Chanel
EX-93 3E GMD DOM
9-00 2x 365d 48460 4.0 1943 3.4 1648
Life: 2899d 245420 4.3 10482 3.6 8866
Larcrest Lindy Chandra VG-85
2-05 2x 365d 20896 4.8 993 3.8 803
Larcrest Inspiration Carly VG-87
3-05 2x 305d 21800 4.5 973 3.3 802



**RICHMOND-RD POMPEY-ET EX-91 EX-MS DOM
SELLS AS LOT 11**

**RICHMOND-RD POMPEY-ET EX-91 DOM
SELLS AS LOT 11**

LOT 11

RICHMOND-FD POMPEY-ET *BY

Holstein Plaza Contacts:
Steve Mower +1 240-520-5906
Jennifer Dingbaum +1 320-250-2412

USA 66800627 *BY Born: 11-December-2009 Excellent-91 VVEEE DOM
2-06 3x 305d 26890 3.9 1044 4.0 1068 DONOR DAM, SELLS DRY
3-10 2x 305d 30049 4.2 1283 3.3 994 inc. 83 embryos in 5 flushes

USA	Milk	Fat	Prot	SCS	DPR	PL	FLC	UDC	PTAT	NM	GTPI
12/14	+833	+54	+35	2.71	+1.2	+3.9	+1.69	+0.97	+1.20	+527	+2305

- Sells with 12 #1 embryos (4 #1 Silver, 4 #1 Gambler and 4 #1 Endure)
- No. 1 GTPI Massey on the U.S. Locator List (12/14)

Co-op Bosside Massey-ET

63026939 GM 12/13 *TV *TL *TY
PTA +741M +48F +40P 99%R 12/14
PTA +2.8PL 2.66SCS +0.7DPR 7.2%DCE
PTA +0.88T +1.22UDC +0.56FLC 98%R
GTPI +2262G

Richmond-FD Ramos Poppy

62371956 Excellent-91 2E DOM *BY
GTPI+2005 +38M +23F +14P +0.03T
3-04 3x 365d 36110 4.1 1489 3.3 1194
4-08 3x 365d 33580 4.1 1362 3.4 1136
2-01 3x 365d 32360 4.1 1313 3.4 1090
6-05 3x 303d 30400 3.8 1170 3.2 967
Life: 1605d 143380 4.0 5795 3.3 4782

Mascol

578891748 GM 4/11 *TV *TL
PTA +91M +32F +24P 99%R 12/14
PTA -.36T -.37UDC -.13FLC 98%R
GTPI +1910G

Coyne-Farms Yelena CRI-ET

61376428 Very Good-85 GMD DOM
1-11 3x 365d 36930 3.6 1336 3.2 1199

Ramos

DEU253642 GM 4/11 *BY *TV *TL
PTA -329M +1F +1P 99%R 12/14
PTA -.07T -.14UDC +0.34FLC
GTPI +1968G

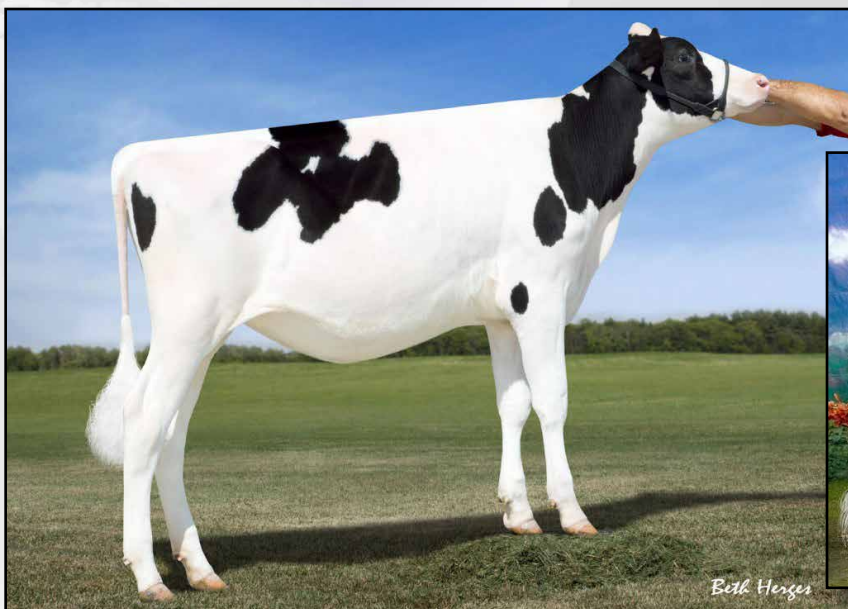
Richmond-FD Poppins

61196507 Very Good-85
3-08 3x 365d 42190 3.3 1406 3.1 1287
6-08 3x 363d 36590 3.2 1178 2.9 1071
5-06 3x 365d 35780 3.5 1250 3.0 1084
2-00 3x 365d 32330 3.3 1072 2.9 949
Life: 1939d 183200 3.4 6157 3.0 5556

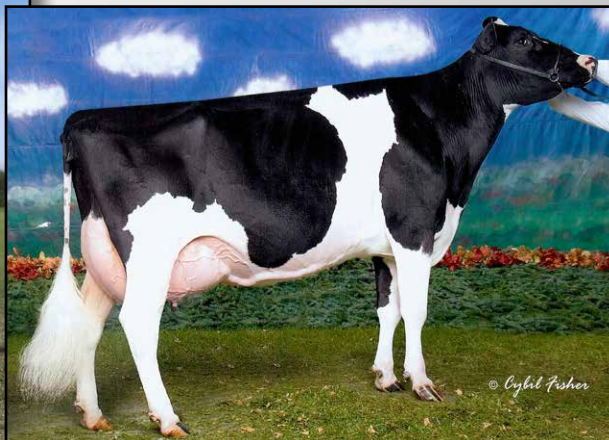
Daughters of Pompey

Pine-Tree 2228 Tang 6162-ET
GTPI+2422 +1365M +57F +48P +1.70T
Pine-Tree 2228 Plat 6084-ET
GTPI+2439 +1599M +60F +54P +1.88T
Pine-Tree 2228 Gala 5813-ET
GTPI+2457 +1072M +61F +35P +1.77T
Pine-Tree 2228 Oak 5940
GTPI+2395 +762M +41F +35P +1.51T
Butlerview Colt Pixie-ET *RC *PC
GTPI+2094 +134M +4F +18P +1.00T
dam of:
Ms Pixie SS 57453-ET *RC *PC
GTPI+2493 +737M +25F +28P +1.55T
• No. 1 Polled Heifer in the World

Very Complete Tango daughter from the Ravens!



SPEEK-NJ UNO DANCE-ET
DAM OF LOT 12



MARKWELL DURHAM DAISY-ET EX-92 GMD DOM
3RD DAM OF LOT 12

LOT 12

IHG TANGO DRAKE-ET

USA 3125201980

Born: 30-June-2014

Holstein Plaza Contacts:

Steve Mower +1 240-520-5906
Jennifer Dingbaum +1 320-250-2412
Hendrik Albada +1 240-520-1566

USA	Milk	Fat	Prot	SCS	DPR	PL	FLC	UDC	PTAT	NM	GTPI
12/14	+1316	+41	+38	2.68	+2.1	+5.3	+1.54	+2.19	+2.08	+584	+2446

Mr Welcome-Hill Tango -ET

70750485 *TV *TL *TY *TD
PTA +1856M +53F +46P 78%R 12/14
PTA +3.0PL 2.82SCS +1.1DPR 6.2%DCE
PTA +2.01T +2.07UDC +1.37FLC 78%R
GTPI +2416G

Speek-NJ Uno Dance-ET

71619098 *TL *TD
GTPI +2382 +751M +26F +27P +2.16T

Lotta-Hill Shottle 41-ET

62942427 GM 8/14 *TR *TV *TL *TY
PTA +1353M +42F +22P 99%R 12/14
PTA +1.34T +1.99UDC +1.00FLC 98%R
GTPI +2223G

Ms Welcome Colby Taya-ET

3002918882 Very Good-87 DOM *TY
1-10 3x 365d 41240 3.3 1357 3.2 1333

Amighetti Numero Uno-ET

ITA 17990915143 *TV *TL *TY
PTA -201M +42F +7P 94%R 12/14
PTA +2.09T +2.05UDC +1.28FLC 90%R
GTPI +2357G

Regan-ALH Planet Deloria-ET

66624771 Very Good-86 VG-MS DOM
GTPI +2136 +1483M +39F +56P +0.94T
2-04 3x 305d 29400 4.4 1300 3.4 994
4-03 2x 305d 26890 3.8 1031 3.3 890

3rd thru 8th Dams

A-L-H Destiny-ET VG-87 GMD DOM
2-04 2x 365d 33200 3.8 1258 3.6 1202
Markwell Durham Daisy EX-92 GMD DOM
6-07 2x 365d 40490 4.0 1627 3.3 1338
• HM All-American Sr-2-Yr Old Cow 2002
• 3rd Sr 2-Yr-Old Cow WDE 2002
Markwell Luke Rapture
EX-92 4E GMD DOM *6 STAR
5-06 2x 365d 39401 4.2 1649 3.3 1303
Markwell Bstar E Raven
EX-95 3E GMD DOM *5 STAR
4-09 2x 365d 36610 4.3 1581 3.4 1254
Markwell Mark Elite
EX-92 4E GMD DOM *3 STAR
7-00 2x 305d 31570 4.0 1263 3.2 1012
Rockalli Mars Emily EX-94 4E GMD DOM
6-03 2x 305d 25490 4.0 1016 3.3 838
Life: (7 Lacs) 182966 3.8 7019 3.5 6329



**GAF-FINE OBSERV CARLESHA VG-86-2YR
LOT 13**



**LARCREST CHESSA VG-87-2YR DOM
DAM OF LOT 13**

LOT 13

GAF-FINE OBSERV CARLESHA

Holstein Plaza Contacts:

Steve Mower +1 240-520-5906
Jennifer Dingbaum +1 320-250-2412
Hendrik Albada +1 240-520-1566

USA 65943592 Very Good-86-2YR VG-MS
2-05 2x 305d 23850 4.0 947 3.6 862

Born: 21-January-2011
DONOR DAM

USA	Milk	Fat	Prot	SCS	DPR	PL	FLC	UDC	PTAT	NM	GTPI
12/14	+489	+43	+31	2.88	+2.1	+3.1	+0.46	+1.58	+1.65	+451	+2259

- Averages over 8 embryos per flush
- Bred: May 25, 2014 to Coyne-Farms Dorcy

Ensenada Taboo Planet-ET

60597003 EX-90 GM 12/11 *TR *TV *TL *TY
PTA +1706M +43F +49P 99%R 12/14
PTA +0.72T +0.39UDC -1.32FLC
GTPI +2155G

De-Su Oman 6121

61681442 Very Good-86 GMD DOM
2-01 3x 365d 34769 4.3 1506 3.4 1175

Lylehaven Lightning

134229692 *TR *TV *TL *TD
PTA -746M +13F -12P 99%R 12/14
PTA +1.02T +0.56UDC +0.34FLC
GTPI +1423G

Larcrest Crimson-ET

53452457 Excellent-92 GMD DOM
GTPI+2242 -94M +54F +32P +1.73T
5-02 2x 365d 46390 5.3 2448 3.7 1708
2-02 2x 365d 36060 4.7 1710 3.7 1351
Life: 1364d 120680 4.9 5947 3.8 4597

De-Su Observer

65917481 *TR *TV *TL *TY *TD
PTA +1110M +25F +33P 99%R 12/14
PTA +465NM\$ +4.9PL 2.91SCS +1.0DPR
PTA +1.79T +2.29UDC -0.48FLC
GTPI +2232

Larcrest Chessa

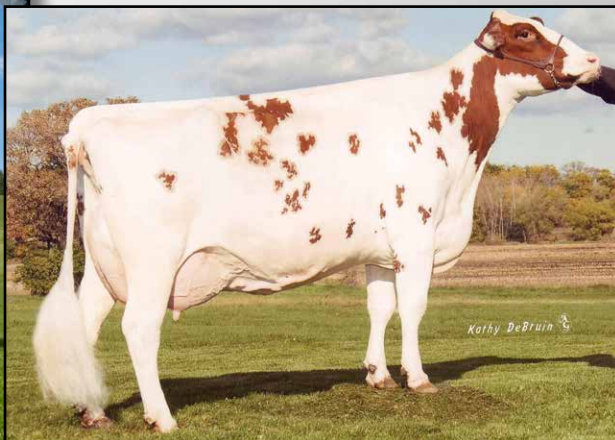
139972483 Very Good-87-2YR DOM
2-08 2x 365d 25150 4.5 1127 3.9 977
• Maternal sister to Larcrest Cale
VG-89-2YR
• Maternal sister is dam to Larcrest
Commander at ABS

3rd thru 7th Dams

Larcrest Cosmopolitan VG-87 GMD DOM
2-04 2x 365d 30930 4.1 1261 3.6 1119
Larcrest Oside Champagne-TW
EX-90 GMD DOM
2-03 2x 365d 29110 4.5 1322 3.7 1077
• 17 sons in A.I. worldwide
Larcrest Juror Chanel
EX-93 3E GMD DOM
9-00 2x 365d 48460 4.0 1943 3.4 1648
Life: 2899d 245420 4.3 10482 3.6 8866
Larcrest Lindy Chandra VG-85
2-05 2x 365d 20896 4.8 993 3.8 803
Larcrest Inspiration Carly VG-87
3-05 2x 305d 21800 4.5 973 3.3 802



MS MARITA ERNHRDT PEPPER *RC *PP
LOT 14



GOLDEN-OAKS PERK REA *PO EX-90
2ND DAM OF LOT 14

LOT 14 MS MARITA ERNHRDT PEPPER *RC *PP

Holstein Plaza Contacts:

Steve Mower +1 240-520-5906
Jennifer Dingbaum +1 320-250-2412
Hendrik Albada +1 240-520-1566

USA 72504210

Born: 26-July-2013

Averages over 5 embryos/flush

Sells with 2 #1 and 1 #2 Aurora Dictate embryos

USA	Milk	Fat	Prot	SCS	DPR	PL	FLC	UDC	PTAT	NM	GTPI
12/14	+472	+10	+27	3.23	+2.1	+3.5	+0.59	+0.88	+0.96	+319	+2098
CAN	Milk	Fat	Prot	HL	SCS	Fert	CA	FLC	UDC	Conf.	GLPI
12/14	+600	+20	+45	109	3.18	108	100	+3	+8	+7	+2557

Da-So-Burn MOM Earnhardt *P

68972328 *PO *TR *TV *TL *TY *TD
PTA +923M +44F +50P 76%R 12/14
PTA +414NM\$ +1.3PL 3.15SCS +1.0DPR
PTA +0.74T +0.13UDC +0.50FLC 76%R
GTPI +2164

Golden-Oaks C Panic-Red P

70560469C Good Plus-83-2YR-CAN
2-06 2x P 365d 31890 3.3 1047 3.2 1010
• Sister to Golden-Oaks Parma-PP-Red

Long-Langs Oman Oman

135746776 *TV *TL *TY *TD
PTA +469M +43F +43P 99%R 12/14
PTA +0.57T +0.59UDC +0.22FLC 99%R
GTPI +2184G

Da-So-Burn Lawnboy Elsie *RC *PO

62739574

Sandy-Valley Colt P-Red-TW

68731810 *PC *TV *TL *TY *TD
PTA +85M -53F +3P 99%R 12/14
PTA +0.54T +0.99UDC +0.89FLC 98%R
GTPI +1800G

Golden-Oaks Perk Rae-Red *PO

61690384 Excellent-90-USA
1-11 3x 365d 31030 3.7 1162 3.4 1041
4-07 3x 365d 29310 3.4 999 3.4 992
• Fantastic Polled Brood Cow!

3rd thru 10th Dams

Scientific Beauty Rae EX-90 DOM
5-11 3x 365 38880 4.1 1607 3.6 1402
Scientific Jubilant Rae-ET EX-90 DOM
5-11 2x 365d 38880 4.1 1608 3.6 1403
Life: 1394d 117590 4.0 4707 3.6 4242
C Hanoverhill Tony Rae
EX-96 3E GMD DOM
6-11 2x 365d 40220 4.1 1661 3.3 1331
Life: 2247d 166396 4.1 6904 3.4 5612
• Grand Champion Western National 1993
C Hanoverhill TT Roxette-ET
EX-94 2E GMD
10-0 3x 365d 35040 4.3 1519 3.0 1063
Life: 2104d 164789 4.1 6760 3.1 3587
Mil-R-Mor Roxette EX-CAN 30*
7-01 2x 365d 24531 4.7 1153
Life (6 Lacs): 121418 4.7 5728
C Glenridge Citation Roxy EX-97 4E GMD
10-1 2x 365d 25280 4.2 1060
Life: 3620d 209784 4.5 9471
• Queen of the Breed I and II
C Norton Court Model Vee EX-90
6-06 2x 365d 22483 3.9 875
Life: 4183d 218629 3.9 8581
• All-American Produce of Dam 1977, '78, '79
Norton Court Reflection Vale VG-85-CAN
Life (14 Lacs): 249583 3.7 9295



AFFINITY MAG HANDRAIL VG-87-2YR
SELLS AS LOT 15

AFFINITY MAG HANDRAIL VG-87-2YR
SELLS AS LOT 15

LOT 15

AFFINITY MAG HANDRAIL *PO

Holstein Plaza Contacts:

Steve Mower +1 240-520-5906
Jennifer Dingbaum +1 320-250-2412
Hendrik Albada +1 240-520-1566

CAN 107082273 Very Good-87 EX-MS Born: 05-March-2011
Due in April 2015 to Ladd Man-P, already has a Homozygous son going to ABS!

USA	Milk	Fat	Prot	SCS	DPR	PL	FLC	UDC	PTAT	NM	GTPI
12/14	+512	+23	+10	2.78	-2.5	+1.2	+1.36	+2.64	+2.26	+202	+1960

Arron Doon West Port Magna P *RC

7823945C *RC *PO *BY *TV *TL
PTA +571M +24F +19P 97%R 12/14
PTA +1.8PL 2.85SCS -2.0DPR 8.3%DCE
PTA +1.19T +1.61UDC +1.03FLC 96%R
GTPI+1914G

Gillette Blitz Snd Hand

8750296C Very Good-86
2-00 3x 305d 29449 3.6 1054 3.0 871
3-01 3x 365d 39818 3.9 1561 3.1 1237

Full sister to Snd Hand

Gillette Blitz 2nd Wind VG-88-CAN 35*

2-02 3x 365d 39096 3.6 1422 3.0 1182
• Holstein Canada Cow of the Year 2011
• HI Global Cow of the Year 2012
• 2nd Jr 3-Yr Old, Quebec Spring Show 2005

Sandy-Valley Bolton-ET

131823833 Excellent-90 GM 8/10 *TV *TL
PTA +1387M +49F +34P 99%R 12/14
PTA +1.43T +1.51UDC +1.10FLC
GTPI +1888G

West Port Arron Doon Mit P-Red

7570916C Very Good-85-2YR VG-MS
2-11 2x 365d 34220 4.9 1689 3.3 1120

Fustead Emory Blitz

17013604 *TV *TL
PTA +1456M -4F -4P 99%R 12/14
PTA +.33T +.17UDC +.11FLC
GTPI +1447G

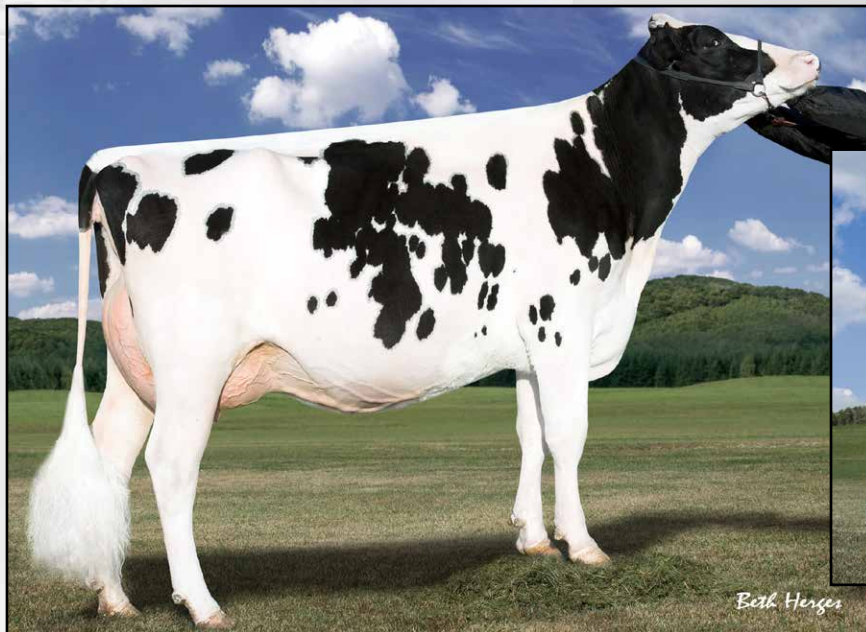
Braedale Second Cut-ET

6860889C Very Good-86-CAN 23*
2-02 3x 365d 41846 4.9 2057 3.3 1371

3rd thru 9th Dams

Braedale Gypsy Grand VG-88-CAN 37*
5-06 2x 365d 34786 4.8 1660 3.3 1135
Braedale Moonriver-ET
GP-83-2YR-CAN GP-83-3YR-JPN
2-00 2x 365d 26012 4.1 1056 3.6 941
Sunnylodge Chief Vick-ET
VG-86-2YR-CAN 31*
2-04 2x 365d 31327 3.7 1146 3.4 1060
Sunnylodge Elevation Jan VG-87-CAN 13*
10-4 2x 305d 35150 4.8 1687 4.8 1254
Life (6 Lacs): 156959 4.3 6784 3.4 4564
Sunnylodge Jane Sheik VG-85-CAN 4*
4-11 2x 340d 27335 4.1 1127
Sunnylodge Fond Vickie VG-85-CAN 2*
4-06 2x 305d 23904 4.1 977
Sunnylodge Janice VG-CAN 4*
4-08 2x 365d 27782 3.8 1047
Life (10 Lacs): 216706 3.8 8203

Nominee granddaughter of CRIMSON



LARCREST CRIMSON-ET EX-92 GMD DOM
2ND DAM OF LOT 16

LARCREST CASE-ETS VG-86 VG-MS DOM
DAM OF LOT 16

LOT 16

TTM NOMINEE 32280

USA 3124897904

Born: 5-August-2014

Holstein Plaza Contacts:

Steve Mower +1 240-520-5906
Jennifer Dingbaum +1 320-250-2412
Hendrik Albada +1 240-520-1566

USA	Milk	Fat	Prot	SCS	DPR	PL	FLC	UDC	PTAT	NM	GTPI
12/14	+1157	+50	+45	2.56	+2.8	+5.8	+0.73	+0.30	+1.02	+657	+2449

De-Su Nominee-ET

70626023 *TY
PTA +727M +31F +32P 78%R 12/14
PTA +3.9PL 2.66SCS +3.2DPR 6.3%DCE
PTA +1.00T +0.95UDC +1.02FLC 76%R
GTPI +2312G

Larcrest Case-ETS

56264512 Very Good-86 VG-MS DOM
GTPI+2318 +1163M +62F +48P +1.16T
2-06 2x 365d 37550 3.7 1398 3.6 1361

Dam of: **Farnear-TBR-BH Caite** GTPI+2447
• High seller Farnear Focus Sale \$185,000

Amighetti Numero Uno-ET

ITA 17990915143 *TV *TL *TY
PTA -201M +42F +7P 94%R 12/14
PTA +2.09T +2.05UDC +1.28FLC 90%R
GTPI +2357G

Coyne-Farms Mass Jill-ET

68677629
2-03 3x 183d 14679 2.7 399 2.8 408

Ensenada Taboo Planet-ET

60597003 EX-90 GM 12/11 *TR *TV *TL *TY
PTA +1706M +43F +49P 99%R 12/14
PTA +0.72T +0.39UDC -1.32FLC
GTPI +2155G

Larcrest Crimson-ET

53452457 Excellent-92 GMD DOM
GTPI+2242 -94M +54F +32P +1.73T
5-02 2x 365d 46390 5.3 2448 3.7 1708
2-02 2x 365d 36060 4.7 1710 3.7 1351
Life: 1364d 120680 4.9 5947 3.8 4597

3rd thru 7th Dams

Larcrest Cosmopolitan VG-87 GMD DOM
2-04 2x 365d 30930 4.1 1261 3.6 1119
Larcrest Oside Champagne-TW
EX-90 GMD DOM
2-03 2x 365d 29110 4.5 1322 3.7 1077
• 17 sons in A.I. worldwide
Larcrest Juror Chanel
EX-93 3E GMD DOM
9-00 2x 365d 48460 4.0 1943 3.4 1648
Life: 2899d 245420 4.3 10482 3.6 8866
Larcrest Lindy Chandra VG-85
2-05 2x 365d 20896 4.8 993 3.8 803
Larcrest Inspiration Carly VG-87
3-05 2x 305d 21800 4.5 973 3.3 802



TERMS AND CONDITIONS

GENERAL:

1. These terms are valid for all agreements made through this sale.
2. The organization of the sale is done by Holstein Plaza, part of AMS Genetics International LLC.
3. The party, which offers animals in this sale will be named after this as the "seller" and the party who buys through this sale and gets the sale item assigned, will be hereinafter identified as the "buyer".
4. The organization will only act as an intermediary in the realization from a (purchase) agreement between seller and buyer.

HOW DOES THE SALE WORK:

1. This is a traditional English auction, which starts low and allows bidders to place progressively higher bids.
2. Each lot closes at staggering times starting at 4:00 p.m. (EST) on Friday, September 9 and the highest bidder then wins the lot.
3. All lots sell with reasonable starting bid.
4. When you place a bid, you agree to pay for the item if you're the winning bidder.
5. There are two ways of bidding - either directly through the internet (www.holsteinplaza.com) or by contacting one of the sale staff members listed.
6. All bids are made in U.S. dollars.
7. When you place a bid, you enter the maximum amount you're willing to pay for the lot. The other bidders and the sale organization will not be able to see your maximum bid. Through this Proxy bidding system, the Holstein Plaza auction system will increase your bid to the next lowest price when another user bids on the same item. The proxy bidding process continues until your maximum bid amount is reached or the auction ends. Every bidder is bound to his bid.
8. The sale is using the popcorn bid system/5-minute rule. Until that moment bids will be accepted.
9. On disputes, which may arise during the sale, the organization decides.
10. AMS Genetics will coordinate the paperwork and transfers.

PAYMENT:

1. Full payment for purchase is due to the sale management within 10 business days of the sale, no exceptions. The ownership stays with the seller until the complete payment of the invoiced amount has been received.
2. Sale invoices will be sent via e-mail or fax following the conclusion of the sale.
3. All live animals must be picked up or arrangements made with 20 days from the date of sale, this is the responsibility of the buyer. No cattle will be released to buyer until payment has been made. After 20 days, seller entitled to \$5.00 per day board and a monthly interest fee of 1%.
4. Upon purchase the buyer takes over the risks after payment. The calf needs to be paid within 10 days after the buyer received the invoice.
5. The payment should be made as mentioned on the invoice.
6. Claims need to be notified in writing to the seller within eight days after delivery to the buyer.

EXCLUDING LIABILITY:

1. The organization cannot be held responsible for errors on the internet site, sale catalog or in the advertisements.
2. The organization cannot be held responsible for visual or non visual regardless the size or nature of such defect of the animals sold.
3. The organization does not take any responsibility for damage to persons or cases, which has arisen because of or connected to the sale.
4. The cow indexes mentioned therein have been calculated or converted by the herdbook in the country the donor cow is housed in accordance with the current methods. All official pedigrees of sale animals can be requested.

5. The organization of the sale can never be held responsible for the bull and embryo contracts supplied with the sale items. The responsibility of the contract is entirely for the organization supplying the contract.
6. The organization can never be held responsible in case the embryos cannot be exported no matter what reason.
7. Any special terms must be communicated with sale management prior to the close of the auction at 4:00 p.m. (EST) on Friday, September 9.

TERMS FOR FIRST CHOICES:

1. First choice is the selection of resulting offspring from listed pregnancies mentioned on the catalog page. Terms are as follows: 25% down within 10 days of sale; balance on possession when youngest choice reaches four months of age. Seller will provide 9K genomic testing of all resulting calves prior to selection, at buyer's request. All sales are final including purchase of first choice females; successful bidder/buyer is responsible for first and second payment.
 - a. Seller to pay all necessary registry and other applicable fees to obtain registry certificate
 - b. Seller entitled to \$5.00 per day board after 4 months, based on age of youngest calf born in the group from which the selection is made.
 - c. Should a female chosen from the respective flush fail to meet breeding guarantees, or should for any reason a female not result from a respective flush, the following steps will be taken to fulfill the purchase agreement:
 - i. Seller will offer choice of remaining ETs from the respective flush
 - ii. If, and only if, the above cannot be resolved, a full refund will be made on all payments. Disappointing genomic test results will not be accepted as a reason to cancel the purchase.

WARRANTIES:

1. Each seller warrants clear title to the animal or lot, and the right to sell same.
2. To the best of the seller's knowledge, each animal is sound and healthy in every respect. Every precaution will be taken to represent the physical condition of each lot exactly as it is known. Heifers that have never calved are in no way guaranteed as to the condition of their udders following calving.
3. Breeding Warranty: The seller guarantees all animals to be breeders, but not beyond the purchase price, with the following understanding:
4. Females--Any female when sold that has freshened within 90 days prior to the date of the sale is, by that fact, considered a breeder. Should any other female when fresh over 90 days fail to become pregnant within four months of sale date, or if less than eighteen months old when sold, fails to become pregnant by the time she reaches the age of 21 months, after having been bred to a bull known to be a breeder and after having been examined or treated by a licensed veterinarian, the matter shall be reported in writing to the seller within three months of the stated limit. The seller shall then have the privilege of four months' time in which to prove the animal a breeder by service to a registered Holstein bull before refunding the purchase price or making other settlement satisfactory to the buyer.
5. Females bred when sold and pronounced in calf are presumed to be pregnant but pregnancy is not guaranteed. The seller makes no warranty that pregnant cows or heifers will deliver calves or that they will carry calves full term. If, after the sale embryos or oocytes are recovered from a female or an attempt is made to superovulate her, this negates the breeding warranty unless there is a separate written agreement between buyer and seller.



P.O. Box 12
Fairplay, MD 21733-0012