



*online heifer sale*

Monday, March 2 through Friday, March 13, 2015  
[www.holsteinplaza.com](http://www.holsteinplaza.com) | Auction closes at 4:00 p.m. (EST)



photos © Han Hopman



# Sourcing Genetics for the World



**Housing and Management Assistance in the U.S. for International buyers on heifers and cows**

## EXAMPLES OF DONOR COWS THAT AMS GENETICS IS WORKING WITH



Silvermaple Damion Camomile EX-95  
2x All-American & All-Canadian  
Embryos from Camomile & daughters



Brenland Doorman Desirable  
GTPI+2405 +3.87T +2.90UDC +2.62FLC  
One of the highest PTAT Heifers



Josey-LLC Dker Spice-Red  
GTPI+2507 +620NM\$ 1.62T  
No. 1 GTPI Red Heifer in the Breed



Maplekeys Sid Odyssey VG-88-2YR  
Reserve All-American Jr 2-Year-Old 2014  
10 generations VG/EX Canadian breeding



### CONTACT INFO

AMS Genetics International LLC  
Mail address: PO Box 12 | Fairplay, MD 21733-0012 USA  
Office Phone: +1 240-329-0169  
Steve Mower Cell: +1 240-520-5906  
Email: [steve.mower@amsgenetics.com](mailto:steve.mower@amsgenetics.com)

### SERVICES:

- Sourcing and locating embryo donors
- Herd visitation selection tours
- Contracting of donors
- Complete coordination of: embryo recovery, health certification and documentation, inland assembly and international shipment insurance
- Housing and management assistance for cattle housed in the United States



[www.holsteinplaza.com](http://www.holsteinplaza.com)

## ONLINE HEIFER SALE | MARCH 2-13, 2015

### HOW DOES THE SALE WORK:

This is a traditional English auction, which starts low and allows bidders to place progressively higher bids. Each lot closes at staggering times (every 3 minutes) starting at 4:00 p.m. (EST) on Friday, March 13, and the highest bidder then wins the lot.

There are two ways of bidding - either directly through the internet ([www.holsteinplaza.com](http://www.holsteinplaza.com)) or by contacting one of the sale staff members listed. All bids are made in U.S. dollars.

When you place a bid, you enter the maximum amount you're willing to pay for the lot. The other bidders and the sale organization will not be able to see your maximum bid. Through this Proxy bidding system, the Holstein Plaza auction system will increase your bid to the next lowest price when another user bids on the same item. The proxy bidding process continues until your maximum bid amount is reached or the auction ends. Every bidder is bound to his bid. The sale is using the popcorn bid system/5-minute rule. Until that moment bids will be accepted.

All lots sell with reasonable starting bid. The bid increments will be as follows: < \$10,000 - \$250; \$10,000-\$20,000 - \$500; \$20,000-\$50,000 - \$1,000; \$50,000-\$100,000 - \$2,000 and > \$100,000 - \$5,000

Please refer to the terms and conditions in the back of your sale catalog for complete details.

sale managed by:



**THE BUYING STOP FOR DAIRYMEN AROUND THE WORLD**

P.O. Box 12, Fairplay, Maryland 21733-0012 USA

Ph. 240-329-0169 | Fax 240-469-4231

[info@holsteinplaza.com](mailto:info@holsteinplaza.com) | [www.holsteinplaza.com](http://www.holsteinplaza.com)

### SALES STAFF:

#### HOLSTEIN PLAZA

Jennifer Dingbaum +1 320-250-2412

[jennifer.dingbaum@holsteinplaza.com](mailto:jennifer.dingbaum@holsteinplaza.com)

Steve Mower +1 240-520-5906

[steve.mower@amsgenetics.com](mailto:steve.mower@amsgenetics.com)

Hendrik Albada +1 240-520-1566

[hendrik.albada@holsteinplaza.com](mailto:hendrik.albada@holsteinplaza.com)

Ray LeBlanc +1 802-249-2155

Nick Raggi +1 443-762-8338

Declan Patten +1 815-697-2700

Paul Trapp +1 608-332-0079

Roger Turner +1 608-770-0012

Troy Yoder +1 478-244-2172

#### Australia

Richard Hull +61 419 951 810

#### EUROPE

Jan de Vries +31 (0)6 26250502

[jandevries@diamond-genetics.nl](mailto:jandevries@diamond-genetics.nl)

Arjan van der Vlis +31 (0)6 43985150

[arjan@eurogenes.nl](mailto:arjan@eurogenes.nl)



### MANAGEMENT/TRANSPORT:

All auction sales will be handled through AMS Genetics International. AMS will also assist as needed in transport coordination. Transport is the cost of the buyer and will not be allowed until payment has been made. For foreign buyers, AMS Genetics can assist with housing and management of purchases.

HOUSING CONTACT: Steve Mower 240-520-5906





**FARNEAR-TBR-BH VICKIE**  
DAM OF LOT 1



**VISION-GEN SH SHO A12037 VG-87-2YR**  
2ND DAM OF LOT 1

## LOT 1

## IHG MAIN E VICKIE 9089

USA 3125944611

Born: 23-August-2014

### Holstein Plaza Contacts:

Steve Mower +1 240-520-5906  
Jennifer Dingbaum +1 320-250-2412  
Hendrik Albada +1 240-520-1566

USA	Milk	Fat	Prot	SCS	DPR	PL	FLC	UDC	PTAT	SCE	NM	GTPI
3/15	+978	+68	+40	2.90	+2.60	+6.9	+2.21	+1.75	+2.29	6.7	+719	+2595

### Stantons Main Event

11596146C  
PTA +1081M +60F +41P 78%R 12/14  
PTA +715NM\$ +6.5PL 2.77SCS +3.0DPR  
PTA +2.55T +2.25UDC +2.88FLC 76%R  
GTPI +2635G

### Farnear-TBR-BH Vickie-ET

71290953 Born: November 11, 2012  
GTPI+2525 +1354M +67F +43P +2.72T  
• Sold for \$121,000 Farnear Sale 2013  
• Already 6 sons over GTPI+2500, as high as GTPI+2672!

### Mountfield SSI Dcy Mogul

3006972816 \*TR \*TV \*TL \*TY \*TD  
PTA +1376M +78F +43P 96%R 12/14  
PTA +2.84T +2.64UDC +3.39FLC 92%R  
GTPI +2586G

### Stantons Super Elda

11084001C Good Plus-83  
2-01 3x 365d 31343 4.1 1274 3.3 1038

### Seagull-Bay Supersire-ET

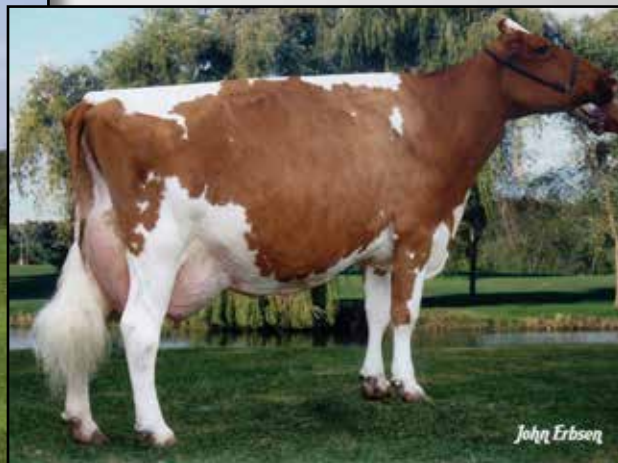
69981349 \*TV \*TL \*TY \*TD  
PTA +1936M +89F +62P 80%R 12/14  
PTA +1.60T +0.93UDC +0.55FLC 77%R  
GTPI +2558G

### Vision-Gen Sh Sho A12037-ET

69517373 Very Good-87 VG-MS @ 2-09  
2-02 2x 327d 28300 3.7 1045 3.4 969  
• Numerous daughters over +2300 GTPI!  
• Sons in AI

### 3rd thru 5th Dams

**KY-Blue GW Dana-ET** EX-91 EX-MS  
4-01 2x 185d 16881 4.5 765 3.2 540  
**BVK Outside Diana-ET** EX-92 2E DOM  
5-01 2x 365d 31920 3.5 1129 3.2 1034  
Life: 1544d 107400 3.5 3708 3.3 3549  
**Ms Kingstead Chief Adeen-ET**  
EX-94 2E DOM  
3-05 2x 310d 30180 4.0 1209 3.4 1020  
Life: 1382d 100760 4.0 4010 3.4 3458  
• 2x Member All-American Produce  
• Nom All-American Jr 3-Yr Old  
• Nom All-American 4-Yr Old  
• Dam of 16 VG and 11 EX Offspring  
**C Aitkenbrae Starbuck Ada** EX-94 2E DOM  
13-8 2x 365d 25150 3.0 764 3.2 796  
2-05 2x 362d 25000 3.6 908 3.2 798  
• All-American Produce of Dam 2000  
• 1st Eastern Nat'l 3-Yr Old & Grand Ch 1990



**LEGEND-MAKER MAG MAGNIFICENT VG-86-2YR-CAN  
DAM OF LOT 2**

**STELBRO RENITA RANGER-RED EX-94 3E  
5TH DAM OF LOT 2**

## LOT 2

## CEDARWAL HARPER MIMOSA \*PP \*RC

CAN 12076010

Born: 13-September-2014

**Holstein Plaza Contacts:**

Steve Mower +1 240-520-5906  
Jennifer Dingbaum +1 320-250-2412  
Hendrik Albada +1 240-520-1566

USA	Milk	Fat	Prot	SCS	DPR	PL	FLC	UDC	PTAT	SCE	NM	GTPI
12/14	+184	+31	+28	2.98	+3.5	+3.6	+1.15	+1.79	+1.40	6.9%	+436	+2273
CAN	Milk	Fat	Prot	HL	SCS	Fert	CA	FLC	UDC	Conf.		GLPI
12/14	+460	+43	42	111	2.93	108	103	+8	+10	+8		+2786

**S-S-I Ladd Harper-P-ET \*RC**

3009554758 \*TV \*TL \*TY \*TD  
PTA -231M +25F +20P 76%R 12/14  
PTA +3.2PL 3.02SCS +3.7DPR 6.2%DCE  
PTA +1.02T +1.26UDC +1.12FLC 75%R  
GTPI +2166G

**Legend-Maker Mag Magnificent**

11018358C Very-Good-86-2YR-CAN \*TY  
GLPI+2476 +1240M +40F +37P  
2-00 2x 365d 31202 3.9 1215 3.2 996  
• #5 GLPI Polled R&W Cow in Canada (12/14)

**Tiger-Lily Ladd-P-Red-ET**

69405976 \*B/R \*TV \*TL \*TY  
PTA -962M +4F -1P 92%R 12/14  
PTA +1.84T +1.89UDC +.86FLC 76%R  
GTPI +2016G

**Cookiecutter Hilda 7048-ET**

3006972823

**Arron Doon West Port Magna P \*RC**

7823945C \*RC \*PO \*BY \*TV \*TL  
PTA +571M +24F +19P 97%R 12/14  
PTA +1.19T +1.61UDC +1.03FLC  
GTPI +1914G

**Legend-Maker Shaquille Genesis**

9674604C Excellent-91-CAN EX-MS  
2-01 2x 305d 24760 3.7 913 3.0 747  
3-09 2x 305d 29138 3.7 1087 3.1 891  
4-11 2x 305d 32540 3.5 1151 3.1 1010

**3rd thru 9th Dams**

**Stelbro Rega Glaze EX-91-CAN 3E 3\***  
2-00 2x 345d 20329 4.1 838 3.4 699  
4-10 2x 315d 25631 4.1 1045 3.3 842  
Life: 6L 135545 3.8 5218 3.3 4530  
**Stelbro Rega Storm VG-88-5YR-CAN 4\***  
5-03 2x 365d 36410 3.1 1127 2.8 1029  
Life: 1846d 167380 3.2 5368 2.9 4907  
**Stelbro Renita Ranger-Red EX-94 3E 8\***  
7-04 2x 365d 29760 3.9 1168 3.1 924  
• All-American R&W Aged Cow 2001  
• Grand Champ Grand National 2001, 1998  
• Unanimous AA R&W 4-Yr-Old 1998  
• All-American R&W Sr 2-Yr-Old Cow 1996  
• All-American R&W Winter Yrlg 1995  
**Stelbro Enhancer Ripple-Red EX-CAN-4E 9\***  
9-05 2x 365d 31552 4.5 1413 3.2 1008  
Life (6 Lacs): 202164 4.5 9112 3.4 6867  
**Stelbro Regal Rene EX-3E-CAN 3\***  
8-09 2x 364d 21874 4.1 893 3.7 805  
Life (7 Lacs): 134725 3.9 5190 3.4 4619  
**Stelbro Astra Starbrite VG-85-CAN**  
6-06 2x 295d 18210 3.8 699 3.5 631  
**Langstate Star VG-85-CAN**  
4-03 2x 292d 17996 4.3 778



PINE-TREE 4890 CATA 5660 \*PC \*TY  
DAM OF LOT 3

## LOT 3

## PINE-TREE 5660 HALO 6466 \*PO

USA 74024388

Born: 6-October-2014

### Holstein Plaza Contacts:

Steve Mower +1 240-520-5906  
Jennifer Dingbaum +1 320-250-2412  
Hendrik Albada +1 240-520-1566

USA	Milk	Fat	Prot	SCS	DPR	PL	FLC	UDC	PTAT	SCE	NM	GTPI
12/14	+309	+37	+21	2.44	+4.5	+8.4	+0.84	+1.59	+1.21	6.2%	+664	+2485
DEU	Milk	Fat	Prot	RZM	RZN	RZS	RZR	FLC	UDC	RZE	RZD	gRZG
12/14				116	140	135	129	130	131	131	91	+151

### Cookiecutter Petron Halogen

3008710387 \*TV \*TL \*TY \*TD  
PTA +588M +36F +24P 77%R 12/14  
PTA +7.6PL 2.50SCS +5.6DPR  
PTA +2.13T +2.44UDC +0.98FLC 76%R  
GTPI +2607G

### Pine-Tree 4890 Casta 5660 \*PC \*TY

71859238 Born: February 19, 2013  
GTPI+2291 +582M +31F +24P +1.39T  
• Main Event sons over GTPI+2500!  
• Breed influencing OUTCROSS Polled!

### Welcome Super Petrone-ET

69207641 \*TR \*TV \*TL \*TY \*TD  
PTA +624M +32F +13P 92%R 12/14  
PTA +1.39T +1.50UDC +1.37FLC 85%R  
GTPI +2361G

### Cookiecutter MOM Halo-ET

3007069733 Very Good-88 EX-MS @ 2-09  
2-00 3x 365d 35410 5.2 1832 3.5 1241

### Pine-Tree Castaway 2711-ET

69169793 \*BY  
PTA +79M +27F +12P 78%R 12/14  
PTA +1.17T +1.52UDC +1.73FLC 77%R  
GTPI +2345G

### Pine-Tree 1369 Codie 4890 \*PO

69804654 Very Good-85-2YR VG-MS  
1-09 3x 305d 28770 4.0 1151 3.2 912

### 3rd thru 7th Dams

**Pine-Tree Oman Wind 1369-ET GP-80**  
4-11 3x 305d 38790 2.8 1069 3.1 1206  
**Brandt-View BWM Wendy VG-85-2YR**  
2-01 3x 365d 37820 3.2 1219 2.9 1089  
**Da-Net Patron Pansy-ET**  
VG-87 GMD DOM  
2-00 3x 365d 35110 4.3 1506 3.3 1164  
**Da-Net Angie Leadman EX-90 GMD DOM**  
6-05 3x 365d 46151 3.5 1598 3.2 1486  
Life: (5 Lacs) 262859 3.9 10212 3.4 9065  
**Da-Net Bambi Steady VG-87 GMD DOM**  
5-02 3x 365d 30024 3.9 1184 3.2 948





**SAVAGE-LEIGH LEONA EX-96 EEEEE**  
DAM OF LOT 4

**SAVAGE-LEIGH GOLDEN GIRL VG-88-2YR**  
FULL SISTER TO LOT 4

## LOT 4

## SAVAGE-LEIGH GOLD LEE

USA 3007810660

Born: 20-December-2014

### Holstein Plaza Contacts:

Steve Mower +1 240-520-5906  
Jennifer Dingbaum +1 320-250-2412  
Hendrik Albada +1 240-520-1566

Full sister to Lot 4

**Savage-Leigh Golden Girl-ET VG-88-2YR**

- Reserve All-American Milking Fall Yrlg 2014
- Reserve Jr. All-American Milking Fall Yrlg 2014

### Braedale Goldwyn

10705608 GP-CAN EX'05 GM 8/08 \*TL  
PTA -353M +15F +1P 99%R 12/14  
PTA +113NM\$ -1.1PL 2.75SCS  
PTA +1.81T +1.51UDC +1.55FLC  
GTPI +1874G

### Savage-Leigh Leona-ET

61604187 Excellent-96 EEEEE  
5-05 2x 365d 42050 4.3 1796 3.2 1343  
• Nom All-American 125,000 lb Cow 2014  
• Nom All-American 125,000 lb Cow 2013  
• Res All-American 125,000 lb Cow 2012  
• Grand Champion, Eastern Fall Nat'l 2012  
• Res Senior Champ, Eastern Fall Nat'l 2011  
• Nom All-American & All-Canadian 2010  
• 6th Jr 3-Yr Old, Int'l Holstein Show 2008  
• HHM All-American Jr 2-Yr Old 2007

### Shoremar James

5902195C GP-81-CAN GM 2/04 \*TV \*TL  
PTA -956M -9F -8P 99%R 12/14  
PTA -.34T -.32UDC -.56FLC  
GTPI +1217G

### Braedale Baler Twine

6860888C Very Good-86-CAN 29\*  
2-01 2x 365d 30906 4.9 1521 3.4 1052

### Canyon-Breeze Allen-ET

17129288 \*TV  
PTA -840M -14F -15P 99%R 12/14  
PTA +1.25T +0.43UDC +1.09FLC  
GTPI +1358G

### Savage-Leigh Licorice-ET

60317090 Excellent-92 GMD DOM  
4-02 2x 365d 51220 4.3 2179 3.3 1693  
Life: 1018d 113740 4.4 4968 3.4 3858  
• Nominated All-American 2006  
• HHM All-American 5-Yr Old Cow 2006  
• Nom All-American Produce 2011 & 2012

### 3rd thru 8th Dams

#### Savage-Leigh Bellwood Linda

EX-92 2E GMD DOM  
2-10 2x 365d 40240 5.8 2349 3.4 1358  
Life: 1312d 126760 5.2 6576 3.2 4076  
• Nom All-American Jr. 3-Year-Old 1999  
• Nom Global Cow of the Year 2005

#### Savage-Leigh Star Linda-ET VG-87 GMD

2-02 2x 365d 30890 4.0 1236 3.1 952  
**Savage-Leigh Glenview Linda**  
EX-90 EVVE GMD DOM  
6-08 2x 365d 41820 4.6 1936 3.0 1247  
Life: 1892d 150300 4.4 6636 3.2 4813

#### Savage-Leigh Lindas Chairman GP-84

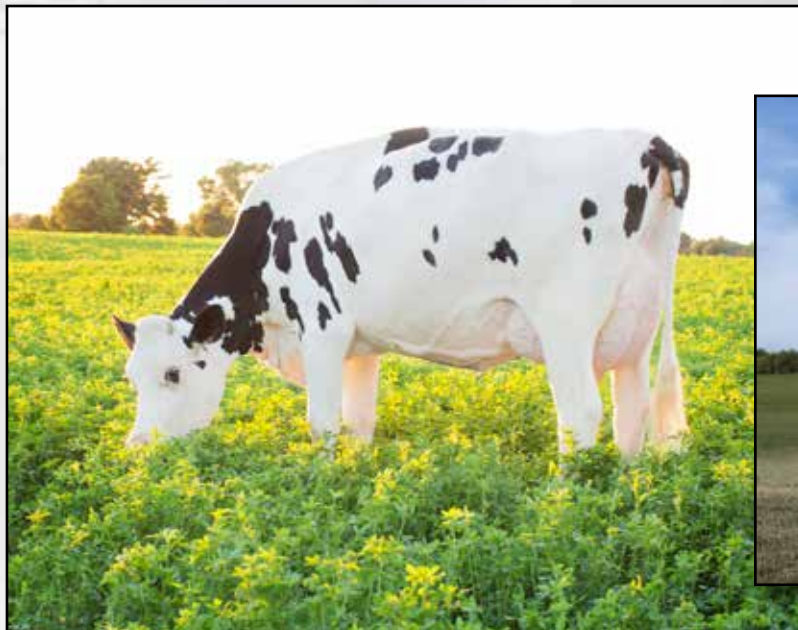
5-10 2x 365d 30620 3.8 1167 3.3 1013  
Life: 1972d 121550 3.9 4718 3.3 4013

#### Savage-Leigh Creek Lydia VG-88

4-11 2x 344d 16390 4.2 685 3.1 511

#### Savage-Leigh Kate Linda VG-85

6-01 2x 305d 19940 4.0 793



DES-Y-GEN PLANET SILK-ET \*RC EX-90 92-MS  
DAM OF LOT 5

DYMENTHOLM SUNVIEW SUNDAY \*RC VG-87-2YR  
LOT 5

## LOT 5

## DYMENTHOLM SUNVIEW SUNDAY \*RC

### Holstein Plaza Contacts:

Steve Mower +1 240-520-5906  
Jennifer Dingbaum +1 320-250-2412  
Hendrik Albada +1 240-520-1566

CAN 11004730

Born: 13-September-2011

Very Good-87-2YR

2-01 2x 305d 26,202 4.1 1069 3.3 873 inc. DONOR DAM (averages 10 embryos/flush)

USA	Milk	Fat	Prot	SCS	DPR	PL	FLC	UDC	PTAT	SCE	NM	GTPI
12/14	+2068	+75	+68	2.77	-3.2	+1.8	+0.85	+1.60	+1.93	6.3%	+605	+2337

- Dam of several high testing daughters including: Main Events at +2627G, +2576G, +2574G and +2560G
- Dam of Sunfish \*RC gRZG+156

### Flevo Genetics Snowman

NLD 38895513 \*TV \*TL  
PTA +2316M +68F +68P 97%R 12/14  
PTA +501NM\$ +0.2PL 2.79SCS -3.0DPR  
PTA +1.92T +1.01UDC +1.69FLC 97%R  
GTPI +2249G

### Des-Y-Gen Planet Silk-ET \*RC \*TY

106109413C Excellent-90 92-MS  
GTPI+2137 +1385M +87F +43P +2.20T  
2-02 2x 365d 29990 4.5 1351 3.2 960  
• #13 GTPI Red/\*RC Cow, Locator List 12/14  
• Dam of \*RC Sympatico, Seneca and Stoic

### Maternal sisters to Sunday

#### Dymenthholm Sunview Sassy \*RC

Very Good-87-2YR VG-MS  
GTPI+2492 +1090F +35P +2.04T  
• No. 1 GTPI \*RC Cow on Locator List  
• Dam of the No. 1 Red Heifer, Josey-LLC Dkr  
Spice-Red GTPI+2507

#### Dymenthholm Sunview Siren-ET \*RC

Very Good-87-2YR VG-MS  
GTPI+2125 NM\$+397 +1.23T  
• No. 1 GTPI Red Cow on Locator List

### O-Bee Manfred Justice

122358313 \*TR \*TV \*TL \*TD  
PTA +316M +43F +30P 99%R 12/14  
PTA -1.11T -1.32UDC +0.22FLC 99%R  
GTPI +2030G

### Broeks MBM Elsa

NLD 381135900 Excellent-90  
5-00 2x 346d 30353 4.2 1286 3.2 974

### Ensenada Taboo Planet

60597003 \*TR \*TV \*TL \*TY \*TD  
PTA +1706M +43F +49P 99%R 12/14  
PTA +0.72T +0.39UDC +1.32FLC 99%R  
GTPI +2155G

### Gen-I-Beq Bolton Silence \*RC

104862615 Very Good-85-CAN  
2-04 2x 365d 30002 4.6 1391 3.6 1069

### 3rd thru 10th Dams

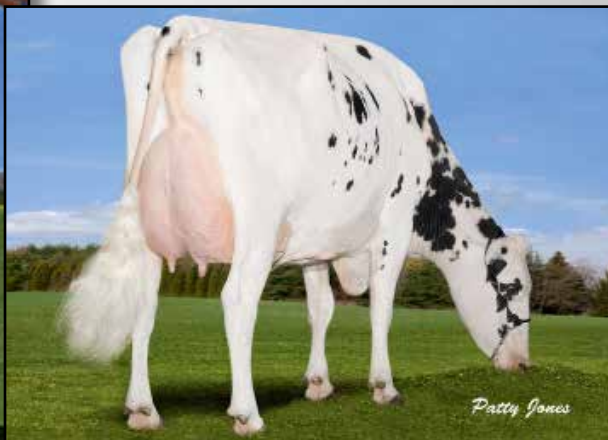
**Gen-I-Beq Goldwyn Secret** VG-87-CAN 8\*  
5-05 2x 365d 30573 4.5 1389 3.4 1038  
**Gen-I-Beq Durham Sherry** VG-87-CAN 8\*  
5-02 2x 365d 40036 3.9 1574 3.2 1268  
**Glen Drummond Splendor**  
VG-86-2YR-CAN 38\*  
4-10 2x 314d 26510 4.2 1124 3.2 840  
**Glen Drummond Aero Flower**  
VG-88-CAN 18\*  
2-03 2x 326d 25622 4.0 1032 3.4 882  
**Glen Drummond Shower** EX-CAN 14\*  
4-10 2x 365d 28583 4.8 1380 3.6 1016  
**Glen Drummond S C Jo Beth**  
EX-2E-CAN 7\*  
Life (6 Lacs): 141637 4.2 5994 3.2 3593  
**Glen Drummond Matt Beth** VG-85 4\*  
11-10 2x 365d 25038 3.7 935  
Life (5 Lacs): 105953 4.1 4295  
**Glen Drummond Marquis Beth** VG-CAN  
Life (8 Lacs): 112688 4.2 4766  
**Ferglynn Rag Apple Bertha** VG-CAN 3\*  
7-00 2x 365d 27796 4.7 1303  
Life (9 Lacs): 208857 4.0 8344



WOW... near GTPI+2500 from Goldwyns family!



LADIES-FIRST IOTA BOBBI VG-87  
DAM OF LOT 6



GEN-I-BEQ SHOTTLE BOMBI EX-92  
FULL SISTER TO 2ND DAM OF LOT 6

## LOT 6

## LADIES-FIRST NUMERO 5886-ET

### Holstein Plaza Contacts:

Steve Mower +1 240-520-5906  
Jennifer Dingbaum +1 320-250-2412  
Hendrik Albada +1 240-520-1566

USA 72656910

Born: 17-December-2013

Bred: 2/7/2015 to Sexed Rubicon

USA	Milk	Fat	Prot	SCS	DPR	PL	FLC	UDC	PTAT	SCE	NM	GTPI
3/15	+850	+52	+23	2.73	+3.6	+5.2	+1.11	+2.15	+2.38	7.3	+583	+2497

### Amighetti Numero Uno

ITA 17990915143 \*TV \*TL \*TY \*TD  
PTA -201M +42F +7P 94R 12/14  
PTA +5.1PL 2.60SCS +3.8DPR 6.5%DCE  
PTA +2.09T +2.05UDC +1.28FLC 90R 12/14  
GTPI +2357G

### Ladies-First Iota Bobbi-ET

70885415 Very Good-87 VG-MS  
GTPI+2307 +1132M +52F +37P +1.54T  
2-03 2x 305d 26590 3.5 942 2.9 758

### Long-Langs Oman Oman

135746776 \*TV \*TL \*TY \*TD  
PTA +469M +43F +43P 99R 12/14  
PTA +0.57T +0.59UDC +0.22FLC 99R  
GTPI +2184G

### Amighetti Shottle Ave

ITA 17990346074 Very Good-89  
2-00 2x 305d 28426 4.1 1171 3.5 996

### Regancrest altaIota-ET

61898306 \*TV \*TL \*TY \*TD  
PTA +589M +61F +37P 99%R 12/14  
PTA +1.43T +1.21UDC +0.92FLC  
GTPI +2271G

### Gen-I-Beq Shottle Brie-ET

104056168C Very Good-85-USA-2YR 1\*  
2-00 2x 365d 30170 4.2 1253 3.3 1006

Full sister to:

- Gen-I-Beq Shottle Bombi EX-92
- Sons in A.I. including Brewmaster
- Gen-I-Beq Shottle Barbie EX-92 11\*
- Son in A.I.

### 3rd thru 11th Dams

#### Gen-I-Beq Champion Bambi

EX-90-CAN 4\*

3-09 2x 365d 31638 4.1 1305 3.2 1005

#### Braedale Baler Twine

VG-86-2YR-CAN 33\*

2-01 2x 365d 30906 4.9 1521 3.4 1052

• Dam of Braedale GOLDWYN!

• Global Cow of the Year 2008

• Canadian Cow of the Year 2007

Braedale Gypsy Grand VG-88-CAN 37\*

5-06 2x 365d 34786 4.8 1660 3.3 1135

• Canadian Cow of the Year 2003

#### Braedale Moonriver-ET

GP-83-2YR-CAN GP-83-3YR-JPN

2-00 2x 365d 26012 4.1 1056 3.6 941

#### Sunnylodge Chief Vick-ET

VG-86-2YR-CAN 31\*

2-04 2x 365d 31327 3.7 1146 3.4 1060

#### Sunnylodge Elevation Jan VG-87-CAN 13\*

10-4 2x 305d 35150 4.8 1687 4.8 1254

Life (6 Lacs): 156959 4.3 6784 3.4 4564

#### Sunnylodge Jane Sheik VG-85-CAN 4\*

4-11 2x 340d 27335 4.1 1127

#### Sunnylodge Fond Vickie VG-85-CAN 2\*

4-06 2x 305d 23904 4.1 977

#### Sunnylodge Janice VG-CAN 4\*

4-08 2x 365d 27782 3.8 1047

Life (10 Lacs): 216706 3.8 8203



WA-DEL ND JACKMAN HOLLY  
LOT 7

WA-DEL RICE PLANET HAVEN  
2ND DAM OF LOT 7

## LOT 7

## WA-DEL ND JACKMAN HOLLY

**Holstein Plaza Contacts:**

Steve Mower +1 240-520-5906  
Jennifer Dingbaum +1 320-250-2412  
Hendrik Albada +1 240-520-1566

USA 141261031

Born: 10-September-2013

DONOR DAM

• *Flush History 14 Missouri, 10 Powerball-P and 7 Pat-Red*

USA	Milk	Fat	Prot	SCS	DPR	PL	FLC	UDC	PTAT	SCE	NM	GTPI
12/14	+995	+51	+45	2.73	+2.3	+5.5	+1.30	+2.06	+1.60	7.8%	+631	+2492

**De-Su altaJackman-ET**

70625846 \*TV \*TL \*TY \*TD  
PTA +1195M +49F +49P 78%R 12/14  
PTA +580NM\$ +4.1PL 2.50SCS +0.2DPR  
PTA +1.55T +1.43UDC +1.77FLC 76%R  
GTPI +2398G

**Wa-Del ND Lewis Haze-ET**

141929277 Good Plus-83-2YR  
2-02 2x 301d 23475 3.9 926 3.2 749 inc.

**Flevo Genetics Snowman-ET**

388965513NLD \*TV \*TL  
PTA +2316M +68F +66P 97%R 12/14  
PTA +1.92T +1.01UDC +1.69FLC 97%R  
GTPI +2249G

**Coyne-Farms Mass Jill-ET**

68677629  
2-03 3x 183d 14679 2.7 399 2.8 408

**Latuch Freddie Lewis-ET**

6686223 \*TV \*TL \*TY  
PTA -133M +11F -2P 98R 12/14  
PTA +1.44T +2.15UDC +1.65FLC 92R  
GTPI +2179G

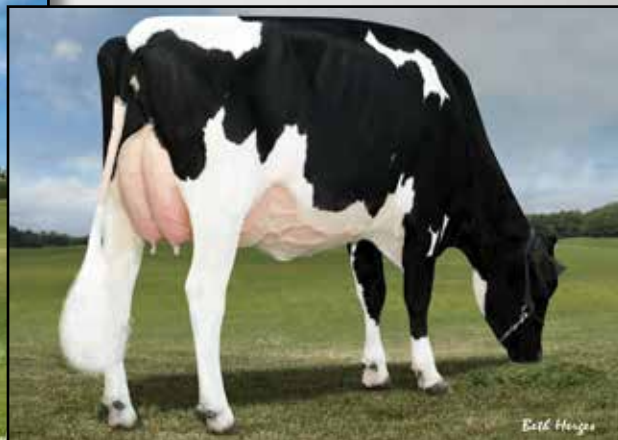
**Wa-Del Rice Planet Haven-ET**

140804164 Very Good-87 DOM  
2-02 2x 365d 29760 4.2 1249 3.5 1035  
• *Petrone son at Semex*

**3rd thru 11th Dams**

**Wa-Del Rice Goldwyn Hana VG-87**  
3-10 2x 365d 27780 4.2 1175 3.5 970  
**Wa-Del Rice O-Man Holly**  
GP-80 DOM  
2-01 2x 365d 27940 3.9 1086 3.3 925  
**Darlawn Mtoto Honibea VG-85 DOM**  
2-05 2x 365d 37710 4.2 1574 3.1 1165  
• *Dam of Wa-Del Hayden @ ABS Global*  
**Darlawn Rudolph Hera VG-86**  
3-04 2x 361d 34360 3.2 1095 3.1 1059  
**Wallmac Bstar Dixie Honi-ET**  
EX-91 2E GMD DOM  
5-00 2x 365d 47750 3.8 1836 2.8 1355  
**Dixie-Lee Legacy VG-87 GMD DOM**  
5-01 2x 305d 30520 4.0 1235 2.8 858  
Life: 134770 4.2 5615 2.9 3948  
**Lar-Lin Glendell Haiti EX-93 GMD DOM**  
5-03 2x 365d 43150 3.6 1560 2.8 1219  
Life: 111990 3.9 4397  
**Ground Round-Oak Hagen Helen**  
EX-92 4E  
8-02 2x 365d 28020 3.7 1037  
Life: 210240 3.8 7982  
**Ground Hagen Mil-Key Maud EX-90**  
Life: 128162 3.8 4852





**BRYHILL SS SATEEN P-ET**  
DAM OF LOT 8

**VENTURE SHOTTBOLT SIZZLE P VG-86-2YR**  
2ND DAM OF LOT 8

## LOT 8

## SEAGULL-BAY PRINCESS-P-ET

USA 3124720561

Born: 19-September-2014

### Holstein Plaza Contacts:

Steve Mower +1 240-520-5906  
Jennifer Dingbaum +1 320-250-2412  
Hendrik Albada +1 240-520-1566

USA	Milk	Fat	Prot	SCS	DPR	PL	FLC	UDC	PTAT	SCE	NM	GTPI
12/14	+1820	+49	+58	2.81	-1.1	+3.8	+1.02	+0.99	+1.85	7.2%	+557	+2330
DEU	Milk	Fat	Prot	RZM	RZN	RZS	RZR	FLC	UDC	RZE	RZD	gRZG
12/14	+1867	+46	+62	131	123	115	103	117	118	126	101	+144

### De-Su 11236 Balisto-ET

70625988 \*TV \*TL \*TY \*TD  
PTA +1418M +77F +67P 78%R 12/14  
PTA +667NM\$ +3.3PL 2.80SCS -1.9DPR  
PTA +1.66T +0.84UDC +1.31FLC 76%R  
GTPI +2410G

### Bryhill SS Sateen P-ET

108133333C Born: March 4, 2013  
GTPI+2472 +1206M +67F +42P +1.93T  
• Former #1 GTPI Polled Female in the World

### De-Su 521 Bookem-ET

66636657 \*TR \*TV \*TL \*TY \*TD  
PTA +1505M +35F +55P 99%R 12/14  
PTA +1.67T +1.28UDC +1.08FLC 99%R  
GTPI +2405G

### De-Su 199

6940353 Very Good-85  
2-10 2x 287d 24890 4.5 1117 3.4 856

### Seagull-Bay Supersire-ET

69981349 \*TV \*TL \*TY \*TD  
PTA +1936M +89F +62P 80%R 12/14  
PTA +1.60T +0.93UDC +0.55FLC 77%R  
GTPI +2558G

### Venture Shottbolt Sizzle P

11306297C Very Good-86-2YR

### 3rd thru 8th Dams

#### Venture Goldwyn Soup P

GP-83-3YR-CAN  
1-11 2x 365d 25620 4.7 1202 3.5 911  
• 2nd Sr. Calf Prince Edward 2010  
**Hickorymea-I I Ad Sweet P-Red**  
GP-84-3YR-CAN 1\*  
4-01 2x 365d 24838 5.1 1246 3.7 895  
**Hickorymea Airliner Tasha P EX-90 1\***  
3-01 2x 365d 25289 5.5 1384 3.5 895  
**Hickorymea Gator Tanya P EX-91 2E**  
5-07 2x 365d 27251 5.0 1376 3.4 937  
Life: 5L 104582 4.9 5137 3.4 3582  
**Hickorymea Houdini Tabbi EX-90 3E**  
8-05 2x 365d 27941 4.4 1232 3.3 930  
Life (7 Lacs): 187142 4.6 8543 3.3 6228  
**Hickorymea Art Penny VG-85 DOM**





**PINE-TREE DIEHARD SHARLA-ET VG-88-2YR**  
MATERNAL SISTER TO DAM OF LOT 9



**PINE-TREE 5146 EARN 5825 \*RC \*PC**  
LOT 9

## LOT 9

## PINE-TREE 5146 EARN 5825-ET \*RC \*PC

### Holstein Plaza Contacts:

Steve Mower +1 240-520-5906  
Jennifer Dingbaum +1 320-250-2412  
Hendrik Albada +1 240-520-1566

USA 71859403

Born: 15-July-2013

Pregnant to 29HO17573 Silver, Due 11/4/2015 Averages over 6 embryos per IVF session

USA	Milk	Fat	Prot	SCS	DPR	PL	FLC	UDC	PTAT	SCE	NM	GTPI
12/14	+738	+27	+40	3.01	+2.6	+4.4	+1.25	+0.30	+1.06	7.8%	+452	+2254
DEU	Milk	Fat	Prot	RZM	RZN	RZS	RZR	FLC	UDC	RZE	RZD	gRZG
12/14	+942	+56	+55	130	125	109	120	104	99	101	100	+141

### Da-So-Burn MOM Earnhardt P

68972328 \*TR \*PO \*TV \*TL \*TY  
PTA +923M +44F +50P 76%R 12/14  
PTA +414NM\$ +1.3PL 3.15SCS +1.0DPR  
PTA +0.74T +0.13UDC +0.50FLC 76%R  
GTPI +2164G

### Pine-Tree 1937 Colt 5146-ET \*RC \*PO

70782158 Good Plus-82-2YR  
2-02 3x 277d 23440 3.8 882 3.3 764  
• Homozygous Polled Earnhardt son at Select,  
Pine-Tree Ernhrht Plus-PP GTPI+2107  
• Full sister to Pine-Tree Colt Shine

Maternal sister to Colt 5146

**Pine-Tree Sharla Daphne-ET VG-88**  
2-02 2x 365d 33900 4.2 1414 3.3 1103  
**Pine-Tree Diehard Sharla-ET VG-88**  
• Several sons in AI  
• Sold for \$70,000 Rudolph Missy Sale 2011

### Long-Langs Oman Oman-ET

135746776 VG-85 GM 8/12 \*TV \*TL \*TY  
PTA +469M +43F +43P 99%R 12/14  
PTA +0.57T +0.59UDC +0.22FLC  
GTPI +2184G

### Da-So-Burn Lawnboy Eslie-ET

62739574  
2-05 2x 305d 30241 4.1 1241 3.0 901

### Sandy-Valley Colt P-Red-TW

68731810 \*PO \*TV \*TL \*TY \*TD  
PTA +85M -53F +3P 99%R 12/14  
PTA +0.54T +0.99UDC +0.89FLC 98%R  
GTPI +1800G

### Pine-Tree Mint Sharla-ET

63651463 DOM  
• 6 sons in AI

### 3rd thru 8th Dams

**Pine-Tree Outside Mint-ET VG-87 DOM**

4-02 2x 365d 33710 4.2 1407 3.1 1059

**Wesswood-HC Rudy Missy-ET**

EX-92 3E DOM

4-11 3x 365d 40880 4.1 1665 3.2 1308

Life: 1262d 119610 4.1 4885 3.2 3804

**Wesswood Elton Mimi EX-90 GMD DOM**

3-05 2x 365d 35380 3.3 1160 3.2 1121

**Wesswood Mandingo Ivy VG-87 VEEVV**

6-05 2x 365d 36330 3.6 1305 3.0 1087

Life: 1835d 144060 3.4 4933 3.1 4412

**Wesswood Astro Matt Esther**

VG-87 GMD DOM

6-08 2x 365d 31860 3.5 1125 3.1 982

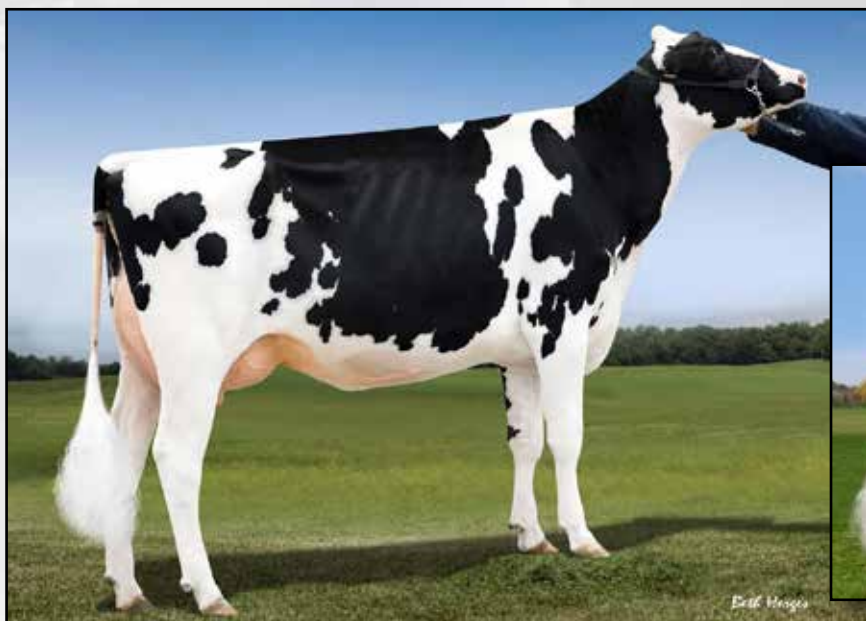
Life: 1847d 140110 3.6 5029 3.2 4424

**Wesswood Bell Claudette**

VG-87 GMD DOM

9-10 2x 365d 38810 3.6 1383 2.9 1140

Life: 3634d 280980 3.6 9997 3.1 8625



**LOOKOUT PESCE EPIC HUE VG-86-2YR-USA**  
DAM OF LOT 10

**COOKIECUTTER MOM HUE VG-88-2YR-CAN**  
2ND DAM OF LOT 10

## LOT 10

## SUNVIEW EVENT HELEN

USA 3128468643

Born: 26-December-2014

**Holstein Plaza Contacts:**

Steve Mower +1 240-520-5906  
Jennifer Dingbaum +1 320-250-2412  
Hendrik Albada +1 240-520-1566

USA	Milk	Fat	Prot	SCS	DPR	PL	FLC	UDC	PTAT	SCE	NM	GTPI
3/15	+680	+53	+40	2.91	+1.9	+4.1	+2.48	+1.47	+1.87	6.9	+557	+2420

**Stantons Main Event**

11596146C  
PTA +1081M +60F +41P 78%R 12/14  
PTA +715NM\$ +6.5PL 2.77SCS +3.0DPR  
PTA +2.55T +2.25UDC +2.88FLC 76%R  
GTPI +2635G

**Lookout Pesce Epic Hue-ET**

107766242 Very Good-86-2YR-USA  
GTPI+2366 +757M +57F +45P +2.29T  
• Several sons in AI

**Mountfield SSI Dcy Mogul**

3006972816 \*TR \*TV \*TL \*TY \*TD  
PTA +1376M +78F +43P 96%R 12/14  
PTA +2.84T +2.64UDC +3.39FLC 92%R  
GTPI +2586G

**Stantons Super Elda**

11084001C Good Plus-83  
2-01 3x 365d 31343 4.1 1274 3.3 1038

**Generations Epic-ET**

11104016 \*TV \*TL \*TY \*TD  
PTA +998M +23F +30P 98%R 12/14  
PTA +1.82T +1.51UDC +2.08FLC  
GTPI +2296G

**Cookiecutter MOM Hue-ET**

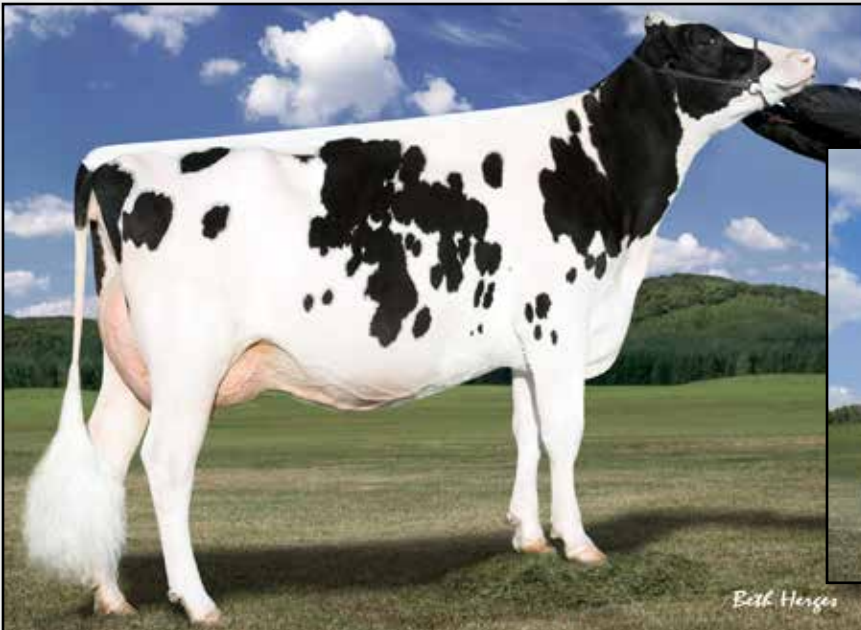
3007069685 Very Good-88-2YR-CAN  
2-04 2x 365d 28887 4.2 1210 3.7 1065  
• Sold for \$200,000 Sale of Stars 2012  
• Full sister to HUNTER  
• Several sons in AI!

**3rd thru 9th Dams**

**Cookiecutter Sthollerwood EX-91 DOM**  
2-04 2x 365d 30410 4.8 1462 3.6 1088  
**Cookiecutter Gld Holler-ET**  
VG-88 EX-MS DOM  
2-03 3x 365d 40730 3.5 1410 3.1 1249  
**Ms Kngs-Rnsm Champ Haley-ET**  
EX-90 GMD DOM  
3-11 2x 365d 43690 3.7 1653 3.1 1357  
**Regancrest-JDV Hanna-ET EX-90 EEVVE**  
4-05 2x 365d 45110 4.3 1922 3.2 1449  
**Long-Haven Rudolph Dee-ET**  
EX-90 2E GMD DOM  
5-04 2x 365d 34650 3.8 1332 3.3 1154  
Life: 2306d 166900 4.3 7099 3.5 5884  
**Regancrest Elton Disrael-ET**  
VG-88 GMD DOM  
2-04 2x 365d 33617 4.5 1499 3.5 1169  
**Snow-N Denises Dellia EX-95 GMD DOM**  
7-06 2x 365d 35610 4.0 1431 3.1 1103  
Life: 2558d 180240 3.9 7108 3.4 6065  
• Gr Ch & Best Udder Spring Nat/WI 1991  
• Global Cow of Year 2005  
**Snow-N Dorys Denise**  
EX-90 2E GMD DOM  
5-09 2x 365d 33350 3.8 1256 2.9 975  
Life: 1604d 114010 3.6 4153 3.0 3432



*Highest PTAM Halogen daughter of CASE!*



**LARCREST CRIMSON-ET EX-92 GMD DOM**  
2ND DAM OF LOT 11



**LARCREST CASE-ETS VG-86 VG-MS DOM**  
DAM OF LOT 11

## LOT 11

## DG TM HALOGEN CASSIE

USA 3013072513

Born: 3-June-2014

### Holstein Plaza Contacts:

Steve Mower +1 240-520-5906  
Jennifer Dingbaum +1 320-250-2412  
Hendrik Albada +1 240-520-156

USA	Milk	Fat	Prot	SCS	DPR	PL	FLC	UDC	PTAT	SCE	NM	GTPI
12/14	+687	+32	+31	2.54	+2.8	+5.4	+0.90	+2.04	+2.12	7.2%	+566	+2425

### Cookiecutter Petron Halogen

3008710387 \*TV \*TL \*TY \*TD  
PTA +588M +36F +24P 77%R 12/14  
PTA +7.6PL 2.50SCS +5.6DPR  
PTA +2.13T +2.44UDC +0.98FLC 76%R  
GTPI +2607G

### Larcrest Case-ETS

56264512 Very Good-86 VG-MS DOM  
GTPI+2318 +1163M +62F +48P +1.16T  
2-06 2x 365d 37550 3.7 1398 3.6 1361

*Dam of: Farnear-TBR-BH Caite* GTPI+2447

- High seller Farnear Focus Sale \$185,000
- 9 Offspring over +2400G

### Welcome Super Petrone-ET

69207641 \*TR \*TV \*TL \*TY \*TD  
PTA +624M +32F +13P 92%R 12/14  
PTA +1.39T +1.50UDC +1.37FLC 85%R  
GTPI +2361G

### Cookiecutter MOM Halo-ET

3007069733 Very Good-88 EX-MS @ 2-09  
2-00 3x 365d 35410 5.2 1832 3.5 1241

### Ensenada Taboo Planet-ET

60597003 EX-90 GM 12/11 \*TR \*TV \*TL \*TY  
PTA +1706M +43F +49P 99%R 12/14  
PTA +0.72T +0.39UDC -1.32FLC  
GTPI +2155G

### Larcrest Crimson-ET

53452457 Excellent-92 GMD DOM  
5-02 2x 365d 46390 5.3 2448 3.7 1708  
2-02 2x 365d 36060 4.7 1710 3.7 1351  
Life: 1364d 120680 4.9 5947 3.8 4597

### 3rd thru 7th Dams

**Larcrest Cosmopolitan** VG-87 GMD DOM  
2-04 2x 365d 30930 4.1 1261 3.6 1119

**Larcrest Oside Champagne-TW**  
EX-90 GMD DOM

2-03 2x 365d 29110 4.5 1322 3.7 1077

• 17 sons in A.I. worldwide

### Larcrest Juror Chanel

EX-93 3E GMD DOM  
9-00 2x 365d 48460 4.0 1943 3.4 1648  
Life: 2899d 245420 4.3 10482 3.6 8866

### Larcrest Lindy Chandra

VG-85

2-05 2x 365d 20896 4.8 993 3.8 803

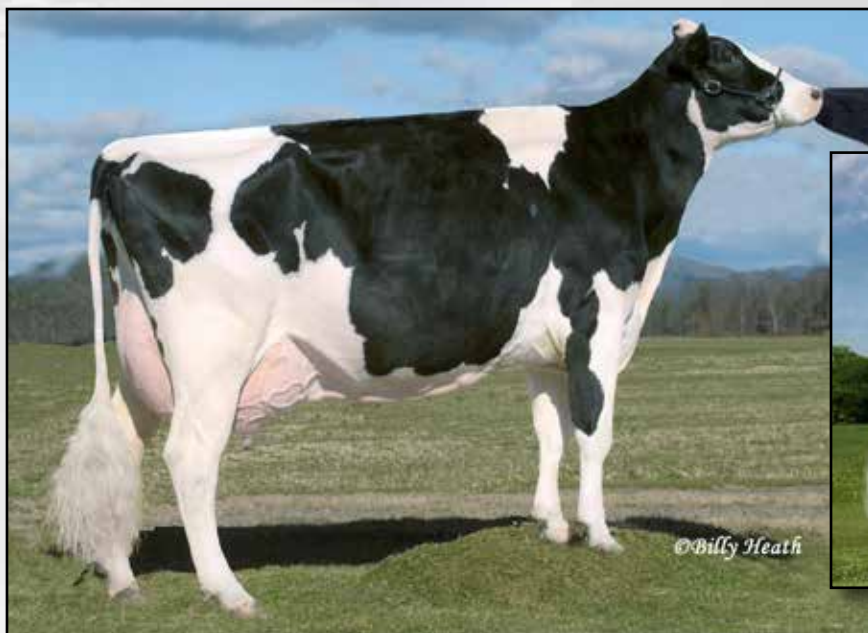
### Larcrest Inspiration Carly

VG-87

3-05 2x 305d 21800 4.5 973 3.3 802



Granddam is the fantastic brood cow, RUD ZIP



WINDSOR-MANOR RUD ZIP EX-95 GMD DOM  
2ND DAM OF LOT 12

WINDSOR-MANOR BXTER ZOIE-ET VG-87  
DAM OF LOT 12

## LOT 12

## PALMYRA MCCUTCHEN ZOIE

### Holstein Plaza Contacts:

Steve Mower +1 240-520-5906  
Jennifer Dingbaum +1 320-250-2412  
Hendrik Albada +1 240-520-1566

USA 72278422

Born: 23-February-2013

Sells Fresh!

USA	Milk	Fat	Prot	SCS	DPR	PL	FLC	UDC	PTAT	SCE	NM	GTPI
12/14	+729	+32	+33	2.87	+0.3	+3.2	+1.39	+1.49	+1.85	7.9%	+403	+2213

### De-Su Bkm McCutchen 1174-ET

69990138 \*TV \*TL \*TY \*TD  
PTA +1083M +47F +41P 86%R 12/14  
PTA +513NM\$ +3.1PL 2.88SCS +0.5DPR  
PTA +2.56T +2.40UDC +1.96FLC 79%R  
GTPI +2409G

### Windsor-Manor Bxter Zoie-ET

65226193 Very Good-87  
3-01 2x 365d 29070 4.1 1194 3.2 942

### De-Su 521 Bookem-ET

66636657 \*TR \*TV \*TL \*TY \*TD  
PTA +1505M +35F +55P 99%R 12/14  
PTA +1.67T +1.28UDC +1.08FLC 99%R  
GTPI +2405G

### Sully Shottle May-TW

138218285 Excellent-90 DOM  
2-02 3x 365d 34110 3.2 1096 3.3 1131

### Emerald-Acr-Sa T-Baxter

132973942 \*B/R \*TV \*TL \*TY \*TD  
PTA +1284M +50F +15P 99%R 12/14  
PTA +0.92T +0.48UDC +0.98FLC 99%R  
GTPI +1900G

### Windsor-Manor Rud Zip

125964739 Excellent-95 3E GMD DOM  
4-07 2x 365d 39230 3.8 1490 3.1 1224  
• Fantastic Brood Cow  
• Multiple sons in AI

### 3rd thru 12th Dams

**Windsor-Manor Jolt Zippy** EX-90 3E  
7-07 2x 361d 34090 3.7 1255 2.9 987  
Life: 2559d 194060 3.8 7368 3.2 6234  
**Windsor-Manor Che Zipper** GP-83 VG-MS  
5-03 2x 365d 36410 3.1 1127 2.8 1029  
Life: 1846d 167380 3.2 5368 2.9 4907  
**Windsor-Manor Star Zara** EX-91 2E GMD  
6-01 2x 365d 41590 3.5 1453 3.2 1315  
Life: 2421d 204030 3.7 7450 3.3 6657  
**Windsor-Manor Melvin Zebra**  
VG-85 VG-MS  
3-08 2x 365d 27820 3.8 1050 3.3 907  
**Del-Myr Tony Zadie** VG-87  
2-03 2x 365d 23600 3.5 835 3.4 797  
**Big-Sinks Jerry Zinna Addie** VG-85  
3-01 2x 365d 22650 3.0 673 3.1 710  
**Big-Sinks Elevation Maym Zinna**  
EX-90 2E GMD  
7-10 2x 365d 27240 3.9 1075  
**Big-Sinks Bootmaker Ariel Maym**  
VG-85 GMD  
4-00 2x 365d 23510 3.5 812  
**Emperor Alice Ariel** VG-85 GMD  
Life: 2754d 169080 3.6 6155  
**Maview Candace Pilot** EX-91 VEEE  
Life: 3139d 151504 3.9 5825



LADIES-FIRST IOTA BOBBI VG-87  
DAM OF LOT 13



GEN-I-BEQ SHOTTLE BRIE VG-85-2YR  
2ND DAM OF LOT 13

## LOT 13

## LADIES-FIRST DTRMN BUNNY-ET

USA 73209142

Born: 8-November-2013

**Holstein Plaza Contacts:**  
Steve Mower +1 240-520-5906  
Jennifer Dingbaum +1 320-250-2412  
Hendrik Albada +1 240-520-1566

USA	Milk	Fat	Prot	SCS	DPR	PL	FLC	UDC	PTAT	SCE	NM	GTPI
12/14	+1531	+52	+43	2.91	+0.9	+3.3	+1.38	+1.53	+2.32	8.3%	+524	+2383

**Ronelee Shmrk Determine-ET**  
73209142 \*TV \*TL \*TY \*TD  
PTA +1398M +34F +28P 79%R 12/14  
PTA +5.6PL 2.95SCS +0.6DPR 5.4%DCE  
PTA +1.39T +1.13UDC +.27FLC 79%R  
GTPI+2182G

**Ladies-First Iota Bobbi-ET**  
70885415 Very Good-87 VG-MS  
GTPI+2307 +1132M +52F +37P +1.54T  
2-03 2x 305d 26590 3.5 942 2.9 758

**Ladys-Manor PL Shamrock**  
68977120 \*TR \*TV \*TL \*TY \*TD  
PTA +1109M +48F +18P 99%R 12/14  
PTA +1.13T +1.17UDC +.06FLC  
GTPI +2304G

**Ronelee Outside Dabble-ET**  
134644585 Excellent-92 2E GMD DOM  
5-03 3x 365d 44530 3.6 1612 3.1 1397

**Regancrest altaIota-ET**  
61898306 \*TV \*TL \*TY \*TD  
PTA +589M +61F +37P 99%R 12/14  
PTA +1.43T +1.21UDC +0.92FLC  
GTPI +2271G

**Gen-I-Beq Shottle Brie-ET**  
104056168C Very Good-85-USA-2YR 1\*  
2-00 2x 365d 30170 4.2 1253 3.3 1006

Full sister to:

- **Gen-I-Beq Shottle Bombi** EX-92
- **Sons in A.I. including Brewmaster**
- **Gen-I- Beq Shottle Barbie** EX-92 11\*
- **Son in A.I.**

### 3rd thru 11th Dams

#### Gen-I-Beq Champion Bambi

EX-90-CAN 4\*  
3-09 2x 365d 31638 4.1 1305 3.2 1005

#### Braedale Baler Twine

VG-86-2YR-CAN 33\*  
2-01 2x 365d 30906 4.9 1521 3.4 1052

- **Dam of Braedale GOLDWYN!**

- **Global Cow of the Year 2008**

- **Canadian Cow of the Year 2007**

#### Braedale Gypsy Grand VG-88-CAN 37\*

5-06 2x 365d 34786 4.8 1660 3.3 1135

- **Canadian Cow of the Year 2003**

#### Braedale Moonriver-ET

GP-83-2YR-CAN GP-83-3YR-JPN  
2-00 2x 365d 26012 4.1 1056 3.6 941

#### Sunnylodge Chief Vick-ET

VG-86-2YR-CAN 31\*  
2-04 2x 365d 31327 3.7 1146 3.4 1060

#### Sunnylodge Elevation Jan VG-87-CAN 13\*

10-4 2x 305d 35150 4.8 1687 4.8 1254  
Life (6 Lacs): 156959 4.3 6784 3.4 4564

#### Sunnylodge Jane Sheik VG-85-CAN 4\*

4-11 2x 340d 27335 4.1 1127

#### Sunnylodge Fond Vickie VG-85-CAN 2\*

4-06 2x 305d 23904 4.1 977

#### Sunnylodge Janice VG-CAN 4\*

4-08 2x 365d 27782 3.8 1047  
Life (10 Lacs): 216706 3.8 8203





**FREUREHAVEN FGS LUCY VG-86-2YR-CAN**  
DAM OF LOT 14



**SNOWBIZ GALAXY LUNA**  
LOT 14

## LOT 14

## SNOWBIZ GALAXY LUNA

### Holstein Plaza Contacts:

Steve Mower +1 240-520-5906  
Jennifer Dingbaum +1 320-250-2412  
Hendrik Albada +1 240-520-1566

CAN 108502597

Born: 04-July-2013

Confirmed Pregnant to 7HO13093 Damaris (gRZG+168), Due November 4, 2015

USA	Milk	Fat	Prot	SCS	DPR	PL	FLC	UDC	PTAT	SCE	NM	GTPI
12/14	+1765	+43	+49	2.76	-0.4	+2.9	+0.98	+1.12	+1.38	8.2%	+490	+2252
DEU	Milk	Fat	Prot	RZM	RZN	RZS	RZR	FLC	UDC	RZE	RZD	gRZG
12/14	+2207	+65	+64	134	125	126	105	116	119	120	95	+149

### De-Su Freddie Galaxy-ET

69990052 99%RHA \*TV \*TL \*TY \*TD  
PTA +1319M +48F +42P 78%R 12/14  
PTA +3.9PL 2.89SCS +1.0DPR  
PTA +1.56T +1.15UDC +1.04FLC 78%R  
GTPI +2320G

### Freurehaven FGS Lucy

11398471C Very Good-86-2YR-CAN \*TY  
GTPI+2335 +2265M +50F +55P +2.15T  
GPA-LPI+3051 / Conf. +13  
2-01 2x 237d 25115 4.3 1076 3.0 756  
• Sold for \$45,000 in Snowbiz Dispersal

### Badger-Bluff Fanny Freddie-ET

60996956 99%RHA-NA \*TV \*TL  
PTA +866M +33F +28P 99%R 12/14  
PTA +0.51T +0.54UDC +1.65FLC  
GTPI +2349G

### De-Su 8947-ET

64701370 Very Good-85 DOM  
2-02 3x 365d 37780 3.7 1406 3.2 1195

### Flevo Genetics Snowman-ET

388965513NLD \*TV \*TL  
PTA +2316M +68F +66P 97%R 12/14  
PTA +1.92T +1.01UDC +1.69FLC 97%R  
GTPI +2249G

### Freurehaven Shottle Lautella

9690374C Very Good-89-3YR-CAN \*BY  
3-00 2x 365d 45221 3.9 1744 3.2 1435  
1-09 2x 365d 35981 3.9 1389 3.1 1122  
• Reserve Grand, N. Niagara 2013

### 3rd thru 9th Dams

#### Freurehaven Lautella Bolton

EX-92-CAN 3\*  
4-01 2x 365d 41665 3.9 1645 3.2 1351

#### Comestar Lautella Goldwyn VG-87 6\*

4-11 3x 365d 46191 4.3 1973 3.3 1534

#### Comestar Lautelma Igniter VG-89 21\*

4-02 2x 365d 49804 4.7 2343 3.5 1728

Life (2 Lacs): 113927 4.5 5115 3.6 4083

#### Comestar Lautelle Emerson-ET

VG-85-CAN 2\*

2-02 2x 365d 30298 4.0 1197 3.6 1093

#### Comestar Lausan Black-ET VG-87-CAN 23\*

5-04 2x 365d 37039 4.3 1587 3.6 1318

Life: 1818d 108246 4.4 4735 3.8 4151

#### Comestar Laurie Sheik-ET

VG-88-CAN 23\*

6-09 2x 365d 29864 4.5 1329 3.4 1016

Life (4 Lacs): 106564 4.5 4780 3.6 3885

• HM All-Canadian Sr 2 Yr Old Cow 1989

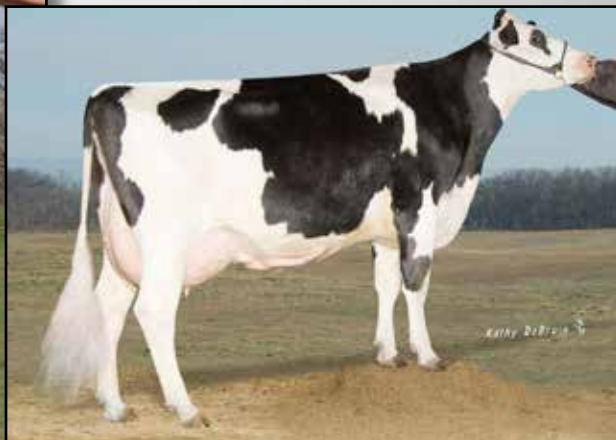
• HM All-American Sr 2 Yr Old Cow 1989

#### Elysa Anthony Lea EX-CAN 15\*

6-02 2x 365d 35770 3.9 1398 2.9 1049

Life (3 Lacs): 109580 4.0 4334 3.1 3439





**PINE-TREE FREDDIE ALEXA EX-90 EVVEE DOM  
LOT 15**

**MNT-VIEW-S BOLIV ALEXA EX-91 EEEEE 2E  
DAM OF LOT 15**

## LOT 15

## PINE-TREE FREDDIE ALEXA

### Holstein Plaza Contacts:

Steve Mower +1 240-520-5906  
Jennifer Dingbaum +1 320-250-2412  
Hendrik Albada +1 240-520-1566

USA 66882647 Born: 11-March-2010 Excellent-90 EVVEE DOM  
2-04 3x 305d 26320 3.8 1008 3.0 788 Fresh: 2/18/2015 DONOR DAM  
• Averages 10.6 embryos in last 3 flushes and 10.9 embryos in last 8 IVF Session

USA	Milk	Fat	Prot	SCS	DPR	PL	FLC	UDC	PTAT	SCE	NM	GTPI
12/14	+971	+26	+24	2.74	+2.2	+5.6	+1.70	+1.43	+1.22	8.1%	+469	+2263

### Badger-Bluff Fanny Freddie

60996956 \*TV \*TL \*TY \*TD  
PTA +866M +33F +28P 99%R 12/14  
PTA +533NM\$ +5.6PL 2.91SCS +4.4DPR  
PTA +0.51T +0.54UDC +1.65FLC 79%R  
GTPI +2349G

### Mnt-View-S Boliv Alexa-ET

62443513 Excellent-91 EEEEE 2E  
1-11 365d 3x 31860 3.7 1171 2.9 931  
Life: 1835d 168660 3.9 6608 3.1 5174  
• Several sons in A.I.

### O-Bee Manfred Justice-ET

122358313 \*TR \*TV \*TL \*TD  
PTA +316M +43F +30P 99%R 12/14  
PTA -1.11T -1.32UDC +.22FLC 99%R  
GTPI +2025G

### Badger-Bluff Flo Fanny-TW

51854015 Very Good-87 DOM  
Life: 1703d 176860 3.7 6603 3.0 5318

### End-Road PVF Boliver-ET

123586443 \*TV \*TL \*TY \*TD  
PTA +513M +20F +21P 99%R 12/14  
PTA +.21T +.38UDC -.96FLC 99%R  
GTPI +1726G

### Jafral Zack Abby-ET

17342866 Very Good-88 GMD DOM  
2-04 2x 365d 38110 4.2 1597 3.5 1341  
5-09 3x 296d 35410 3.8 1339 3.0 1049  
• Fantastic Brood Cow  
• Multiple sons in AI

### 3rd thru 8th Dams

**Jafral Prelude Prissy** VG-86 GMD DOM  
1-11 2x 365d 36629 3.7 1365 3.7 1355  
**Jafral Wister Raven** VG-88 GMD DOM  
3-09 2x 365d 40663 4.1 1682 3.6 1452  
**Briarpatch-R Raven** VG-87 GMD DOM  
5-00 2x 365d 40860 3.9 1609 3.6 1470  
**Rilara Mars Las Ravena** EX-91 GMD DOM  
3-04 2x 305d 27379 4.0 1093  
4-03 2x 305d 29030 4.6 1329  
**Rilara Haven Charming Las**  
VG-87 GMD DOM  
Life: 164403 3.4 3.1  
**Rag Apple Locust-Grove Charm**  
VG-86 GMD DOM  
502 365d 26321 3.6 948

Close to FLUSH-AGE, Joyride daughter of HUE!



COOKIECUTTER SHTHOLLERWOOD EX-91 DOM  
2ND DAM OF LOT 16

COOKIECUTTER MOM HUE VG-88-2YR  
DAM OF LOT 16

## LOT 16

## MAPEL WOOD JOYRIDE TO HAWAII

CAN 12019966

Born: 6-June-2014

### Holstein Plaza Contacts:

Steve Mower +1 240-520-5906  
Jennifer Dingbaum +1 320-250-2412  
Hendrik Albada +1 240-520-1566

USA	Milk	Fat	Prot	SCS	DPR	PL	FLC	UDC	PTAT	SCE	NM	GTPI
12/14	+899	+62	+52	2.79	+0.0	+0.6	+1.72	+1.02	+2.08	7.5%	+471	+2328
CAN	Milk	Fat	Prot	HL	SCS	Fert	CA	FLC	UDC	Conf.		GLPI
12/14	+1372	+81	+80	105	2.70	101	104	+12	+8	+13		+3216

### Suntor Joyride

107364024 \*TV \*TL \*TY \*TD  
PTA +1052M +40F +52P 78%R 12/14  
PTA +507NM\$ +3.1PL 2.78SCS +1.2DPR  
PTA +2.33T +1.35UDC +2.30FLC 76%R  
GTPI +2406

### Cookiecutter MOM Hue

3007069685 Very Good-88-2YR-CAN 88-MS  
GTPI+2156 +2.07T +1.28UDC +1.44FLC  
2-04 2x 305d 25296 4.2 1067 3.7 928  
• Tremendous Brood Cow  
• Several sons in AI

### Generations Epic-ET

11104016 \*TV \*TL \*TY \*TD  
PTA +998M +23F +30P 98%R 12/14  
PTA +1.82T +1.51UDC +2.08FLC  
GTPI +2296G

### Suntor Man O Man Jelena

106673229 Very Good-86-2YR-CAN  
2-00 2x 365d 30022 4.6 1389 3.5 1041

### Long-Langs Oman Oman-ET

135746776 VG-85 GM 8/12 \*TV \*TL \*TY  
PTA +469M +43F +43P 99%R 12/14  
PTA +0.57T +0.59UDC +0.22FLC  
GTPI +2184G

### Cookiecutter Sthollerwood

65597532 Excellent-91 DOM  
2-04 3x 305d 25580 4.9 1243 3.5 902  
• Dam to Cookiecutter MOM Hunter @CRV  
• Maternal sister to

### Cookiecutter MOM Halo VG-88 DOM

• Dam of the former #1 GTPI sire Halogen

### 3rd thru 10th Dams

#### Cookiecutter Gld Holler

VG-88 EX-MS DOM  
2-03 2x 305d 34330 3.6 1224 3.0 1045  
• Dam to Hefty @ Semex

#### Ms Kings-Rnsm Champ Hayley

EX-90 GMD DOM  
3-11 3x 305d 37789 3.7 1404 3.0 1151

#### Regancrest-JDV Hanna

EX-90 GMD DOM  
4-07 3x 305d 39511 4.3 1704 3.2 1248

#### Long-Haven Rudolph Dee

EX-90 2E GMD DOM  
2-11 2x 305d 29110 4.8 1393 3.8 1111

#### Regancrest Elton Disrael

VG-88-3YR GMD DOM  
2-04 365d 33618 4.5 1499 3.5 1168

• Full sister to Regancrest Elton Durham

#### Snow-N-Denises Dellia

EX-95 2E GMD DOM  
7-06 2x 365d 35611 4.0 1431 3.1 1102

• Dam of Durhan, Dante, Derry and Dundee

• 33 EX daughter by 19 different sires

• Runner-Up Queen of the Breed II

#### Snow-N-Dorys Denise

EX-90 2E GMD DOM  
5-09 2x 365d 33349 3.8 1257 3.1 1038





COOKIECUTTER SHTHOLLERWOOD EX-91 DOM  
2ND DAM OF LOT 17

COOKIECUTTER MOM HUE VG-88-2YR  
DAM OF LOT 17

## LOT 17

## OCONNORS DISTINCTION HEIDI

CAN 108842601

Born: 20-March-2014

### Holstein Plaza Contacts:

Steve Mower +1 240-520-5906  
Jennifer Dingbaum +1 320-250-2412  
Hendrik Albada +1 240-520-1566

USA	Milk	Fat	Prot	SCS	DPR	PL	FLC	UDC	PTAT	SCE	NM	GTPI
12/14	+881	+56	+43	2.86	+1.3	+3.3	+0.94	+1.28	+1.94	6.8%	+548	+2378
CAN	Milk	Fat	Prot	HL	SCS	Fert	CA	FLC	UDC	Conf.		GLPI
12/14	+1108	+71	+62	109	2.83	105	107	+11	+9	+13		+3090

### De-Su Distinction 11130

70625882 \*TR \*TV \*TL \*TY \*TD  
PTA +885M +69F +35P 78%R 12/14  
PTA +639NM\$ +5.4PL 2.94SCS +2.2DPR  
PTA +1.40T +1.47UDC +0.37FLC 78%R  
GTPI +2427G

### Cookiecutter MOM Hue

3007069685 Very Good-88-2YR-CAN 88-MS  
GTPI+2156 +2.07T +1.28UDC +1.44FLC  
2-04 2x 305d 25296 4.2 1067 3.7 928  
• Tremendous Brood Cow  
• Several sons in AI

### Ladys-Manor Pl Shamrock

68977120 \*TR \*TV \*TL \*TY \*TD  
PTA +1109M +48F +18P 99%R 12/14  
PTA +1.13T +1.17UDC +0.06FLC  
GTPI +2304G

### Clear-Echo M-O-M 2150

68669750 Very Good-87-2YR DOM  
2-02 2x 305d 31370 1150 3.2 997

### Long-Langs Oman Oman-ET

135746776 VG-85 GM 8/12 \*TV \*TL \*TY  
PTA +469M +43F +43P 99%R 12/14  
PTA +0.57T +0.59UDC +0.22FLC  
GTPI +2184G

### Cookiecutter Sthollerwood

65597532 Excellent-91 DOM  
2-04 3x 305d 25580 4.9 1243 3.5 902  
• Dam to Cookiecutter MOM Hunter @CRV  
• Maternal sister to

### Cookiecutter MOM Halo VG-88 DOM

• Dam of the former #1 GTPI sire Halogen

### 3rd thru 10th Dams

#### Cookiecutter Gld Holler

VG-88 EX-MS DOM  
2-03 2x 305d 34330 3.6 1224 3.0 1045  
• Dam to Hefty @ Semex

#### Ms Kings-Rnsm Champ Hayley

EX-90 GMD DOM  
3-11 3x 305d 37789 3.7 1404 3.0 1151

#### Regancrest-JDV Hanna

EX-90 GMD DOM  
4-07 3x 305d 39511 4.3 1704 3.2 1248

#### Long-Haven Rudolph Dee

EX-90 2E GMD DOM  
2-11 2x 305d 29110 4.8 1393 3.8 1111

#### Regancrest Elton Disrael

VG-88-3YR GMD DOM  
2-04 365d 33618 4.5 1499 3.5 1168

• Full sister to Regancrest Elton Durham

#### Snow-N-Denises Dellia

EX-95 2E GMD DOM  
7-06 2x 365d 35611 4.0 1431 3.1 1102

• Dam of Durhan, Dante, Derry and Dundee

• 33 EX daughter by 19 different sires

• Runner-Up Queen of the Breed II

#### Snow-N-Dorys Denise

EX-90 2E GMD DOM  
5-09 2x 365d 33349 3.8 1257 3.1 1038



**SAVAGE-LEIGH GOLD LONA EX-92 92-MS (MAX-SCORE)**  
DAM OF LOT 18

**SAVAGE-LEIGH ALEX LACEY**  
MATERNAL SISTER TO LOT 18

## LOT 18

## SAVAGE-LEIGH ACME LONA

### Holstein Plaza Contacts:

Steve Mower +1 240-520-5906  
Jennifer Dingbaum +1 320-250-2412  
Hendrik Albada +1 240-520-1566

USA 3007810724 Born: 17-March-2014  
Flushed once, made 10 #1 embryos by Sexed Gold Chip!

**KHW Elm-Park Acme \*RC**  
61720218 \*RC \*TV \*TL \*TY \*TD  
PTA -352M +9F +8P 99%R 12/14  
PTA +161NM\$ +2.6PL 3.22SCS  
PTA +1.56T +2.03UDC +0.41FLC  
GTPI +1865G

**Savage-Leigh Gold Lona-ET**  
3004778739 Excellent-92 92-MS Max Score  
2-05 2x 354d 32850 4.1 1354 3.3 1099  
3-06 2x 365d 34290 3.8 1304 3.1 1065  
5-03 2x 305d 32500 3.9 1272 3.2 1043  
• 1st East Fall Nat'l 4-Yr-Old & Reserve Sr. Champion 2013  
• Mid-West Fall Nat'l Sr. 3-Yr-Old & Intermediate Champion 2012  
• 1st East Fall Nat'l Sr. 2-Yr-Old 2011

Maternal sister to Lot:  
**Savage-Leigh Alex Lacey**  
• Jr. All-American Winter Yearling Heifer '14  
• All-American Winter Yearling '14  
• 1st Winter Yearling WDE 2014

**Ladino-Park Talent-IMP \*RC**  
AUS 930377 EX-90  
PTA -582M -45F -9P 99%R 12/14  
PTA +1.12T +1.28UDC +.29FLC  
GTPI +1374G

**Kamps-Hollow Altitude \*RC**  
129136431 Excellent-95 2E DOM  
Life: 1844d 144460 4.4 6295 3.7 5288

**Braedale Goldwyn**  
10705608 100% RHA-NA \*TV \*TL \*TY  
PTA -353M +15F +1P 99%R 12/14  
PTA +1.81T +1.51UDC +1.55FLC  
GTPI +1874G

**Savage-Leigh Licorice-ET**  
60317090 Excellent-92 GMD DOM  
4-02 2x 365d 51220 4.3 2179 3.3 1693  
Life: 1018d 113740 4.4 4968 3.4 3858  
• Nominated All-American 2006  
• HHM All-American 5-Yr Old Cow 2006  
• Nom All-American Produce 2011 & 2012

Maternal sister to Lona:  
**Savage-Leigh Leona EX-96 EEEEE**  
• Nom All-American 125,000 lb Cow 2014  
• Nom All-American 125,000 lb Cow 2013  
• Res All-American 125,000 lb Cow 2012  
• Grand Champion, Eastern Fall Nat'l 2012  
• Res Senior Champ, Eastern Fall Nat'l 2011  
• Nom All-American & All-Canadian 2010  
• 6th Jr 3-Yr Old, Int'l Holstein Show 2008  
• HHM All-American Jr 2-Yr Old 2007

### 3rd thru 8th Dams

**Savage-Leigh Bellwood Linda**  
EX-92 2E GMD DOM  
2-10 2x 365d 40240 5.8 2349 3.4 1358  
Life: 1312d 126760 5.2 6576 3.2 4076  
• Nom All-American Jr. 3-Year-Old 1999  
• Nom Global Cow of the Year 2005  
**Savage-Leigh Star Linda-ET VG-87 GMD**  
2-02 2x 365d 30890 4.0 1236 3.1 952  
**Savage-Leigh Glenview Linda**  
EX-90 EVVE GMD DOM  
6-08 2x 365d 41820 4.6 1936 3.0 1247  
Life: 1892d 150300 4.4 6636 3.2 4813  
**Savage-Leigh Lindas Chairman GP-84**  
5-10 2x 365d 30620 3.8 1167 3.3 1013  
Life: 1972d 121550 3.9 4718 3.3 4013  
**Savage-Leigh Creek Lydia VG-88**  
4-11 2x 344d 16390 4.2 685 3.1 511  
**Savage-Leigh Kate Linda VG-85**  
6-01 2x 305d 19940 4.0 793





# TERMS AND CONDITIONS

## GENERAL:

1. These terms are valid for all agreements made through this sale.
2. The organization of the sale is done by Holstein Plaza, part of AMS Genetics International LLC.
3. The party, which offers animals in this sale will be named after this as the "seller" and the party who buys through this sale and gets the sale item assigned, will be hereinafter identified as the "buyer".
4. The organization will only act as an intermediary in the realization from a (purchase) agreement between seller and buyer.

## HOW DOES THE SALE WORK:

1. This is a traditional English auction, which starts low and allows bidders to place progressively higher bids.
2. Each lot closes at staggering times starting at 4:00 p.m. (EST) on Friday, September 9 and the highest bidder then wins the lot.
3. All lots sell with reasonable starting bid.
4. When you place a bid, you agree to pay for the item if you're the winning bidder.
5. There are two ways of bidding - either directly through the internet ([www.holsteinplaza.com](http://www.holsteinplaza.com)) or by contacting one of the sale staff members listed.
6. All bids are made in U.S. dollars.
7. When you place a bid, you enter the maximum amount you're willing to pay for the lot. The other bidders and the sale organization will not be able to see your maximum bid. Through this Proxy bidding system, the Holstein Plaza auction system will increase your bid to the next lowest price when another user bids on the same item. The proxy bidding process continues until your maximum bid amount is reached or the auction ends. Every bidder is bound to his bid.
8. The sale is using the popcorn bid system/5-minute rule. Until that moment bids will be accepted.
9. On disputes, which may arise during the sale, the organization decides.
10. AMS Genetics will coordinate the paperwork and transfers.

## PAYMENT:

1. Full payment for purchase is due to the sale management within 10 business days of the sale, no exceptions. The ownership stays with the seller until the complete payment of the invoiced amount has been received.
2. Sale invoices will be sent via e-mail or fax following the conclusion of the sale.
3. All live animals must be picked up or arrangements made with 20 days from the date of sale, this is the responsibility of the buyer. No cattle will be released to buyer until payment has been made. After 20 days, seller entitled to \$5.00 per day board and a monthly interest fee of 1%.
4. Upon purchase the buyer takes over the risks after payment. The calf needs to be paid within 10 days after the buyer received the invoice.
5. The payment should be made as mentioned on the invoice.
6. Claims need to be notified in writing to the seller within eight days after delivery to the buyer.

## EXCLUDING LIABILITY:

1. The organization cannot be held responsible for errors on the internet site, sale catalog or in the advertisements.
2. The organization cannot be held responsible for visual or non visual regardless the size or nature of such defect of the animals sold.
3. The organization does not take any responsibility for damage to persons or cases, which has arisen because of or connected to the sale.
4. The cow indexes mentioned therein have been calculated or converted by the herdbook in the country the donor cow is housed in accordance with the current methods. All official pedigrees of sale animals can be requested.

5. The organization of the sale can never be held responsible for the bull and embryo contracts supplied with the sale items. The responsibility of the contract is entirely for the organization supplying the contract.
6. The organization can never be held responsible in case the embryos cannot be exported no matter what reason.
7. Any special terms must be communicated with sale management prior to the close of the auction at 4:00 p.m. (EST) on Friday, September 9.

## TERMS FOR FIRST CHOICES:

1. First choice is the selection of resulting offspring from listed pregnancies mentioned on the catalog page. Terms are as follows: 25% down within 10 days of sale; balance on possession when youngest choice reaches four months of age. Seller will provide 9K genomic testing of all resulting calves prior to selection, at buyer's request. All sales are final including purchase of first choice females; successful bidder/buyer is responsible for first and second payment.
  - a. Seller to pay all necessary registry and other applicable fees to obtain registry certificate
  - b. Seller entitled to \$5.00 per day board after 4 months, based on age of youngest calf born in the group from which the selection is made.
  - c. Should a female chosen from the respective flush fail to meet breeding guarantees, or should for any reason a female not result from a respective flush, the following steps will be taken to fulfill the purchase agreement:
    - i. Seller will offer choice of remaining ETs from the respective flush
    - ii. If, and only if, the above cannot be resolved, a full refund will be made on all payments. Disappointing genomic test results will not be accepted as a reason to cancel the purchase.

## WARRANTIES:

1. Each seller warrants clear title to the animal or lot, and the right to sell same.
2. To the best of the seller's knowledge, each animal is sound and healthy in every respect. Every precaution will be taken to represent the physical condition of each lot exactly as it is known. Heifers that have never calved are in no way guaranteed as to the condition of their udders following calving.
3. Breeding Warranty: The seller guarantees all animals to be breeders, but not beyond the purchase price, with the following understanding:
4. Females--Any female when sold that has freshened within 90 days prior to the date of the sale is, by that fact, considered a breeder. Should any other female when fresh over 90 days fail to become pregnant within four months of sale date, or if less than eighteen months old when sold, fails to become pregnant by the time she reaches the age of 21 months, after having been bred to a bull known to be a breeder and after having been examined or treated by a licensed veterinarian, the matter shall be reported in writing to the seller within three months of the stated limit. The seller shall then have the privilege of four months' time in which to prove the animal a breeder by service to a registered Holstein bull before refunding the purchase price or making other settlement satisfactory to the buyer.
5. Females bred when sold and pronounced in calf are presumed to be pregnant but pregnancy is not guaranteed. The seller makes no warranty that pregnant cows or heifers will deliver calves or that they will carry calves full term. If, after the sale embryos or oocytes are recovered from a female or an attempt is made to superovulate her, this negates the breeding warranty unless there is a separate written agreement between buyer and seller.

