



*online heifer sale*

Monday, September 28 through Thursday, October 8, 2015  
[www.holsteinplaza.com](http://www.holsteinplaza.com) | Auction closes at 4:00 p.m. (EST)



photos © Han Hopman



# Sourcing Genetics for the World



AMS Genetics can source embryos to fit your individual requirements.  
 If you want production or shine in the show ring AMS Genetics is your starting point!

## EXAMPLES OF DONOR COWS THAT AMS GENETICS IS WORKING WITH



EO Siemers Ashlyns Angel EX-96 3E  
 Four-Time All-American Nominee  
 Famous Stormatic daughter of Ashlyn



ND-Druvale O Scarlet-Red  
 GTPI+2458 +2.71T / gRZG+160  
 No. 1 Red Olympian on RZG



Josey-LLC Dkr Spice-Red  
 GTPI+2449 +590NM\$ +1.68T  
 No. 6 Red Heifer in the U.S.



Butz-Butler Gold Barbara EX-92  
 All-American 2012, 2013, 2014  
 Granddaughter of BARBIE

AMS Genetics has 30 years experience in the sourcing and exportation of Holstein embryos to the world. Although many things changed over the 30 years, one thing is still constant, our commitment to our clients to provide great service and to locate and obtain the genetics that they need. If you are looking to purchase embryos to introduce new genetics into your A.I. company or your herd, AMS Genetics will be your partner in sourcing the U.S. genetic base and handling the exportation. We can adapt our selection to emphasis your selection criteria, so we focus on the genetics that will do the best job for your goals.

### Services:

- Sourcing and locating embryo donors
- Herd visitation selection tours
- Contracting of donors
- Complete coordination of: embryo recovery, health certification and documentation, inland assembly and international shipment insurance
- Housing and management assistance for cattle housed in the United States
- Sire sourcing/selection for A.I. companies worldwide
- Commercial dairymen sire sourcing and selection



### CONTACT INFO

AMS Genetics International LLC  
 Mail address: PO Box 12 | Fairplay, MD 21733-0012 USA  
 Office Phone: +001 240-329-0169  
 Steve Mower Cell: +001 240-520-5906  
 Email: [steve.mower@amsgenetics.com](mailto:steve.mower@amsgenetics.com)

[www.amsgenetics.com](http://www.amsgenetics.com)



[www.holsteinplaza.com](http://www.holsteinplaza.com)

## ONLINE HEIFER SALE | SEPT. 28-OCT. 8, 2015

### HOW DOES THE SALE WORK:

This is a traditional English auction, which starts low and allows bidders to place progressively higher bids. Each lot closes at staggering times (every 3 minutes) starting at 4:00 p.m. (EST) on Thursday, October 8, and the highest bidder then wins the lot.

There are two ways of bidding - either directly through the internet ([www.holsteinplaza.com](http://www.holsteinplaza.com)) or by contacting one of the sale staff members listed. All bids are made in U.S. dollars.

When you place a bid, you enter the maximum amount you're willing to pay for the lot. The other bidders and the sale organization will not be able to see your maximum bid. Through this Proxy bidding system, the Holstein Plaza auction system will increase your bid to the next lowest price when another user bids on the same item. The proxy bidding process continues until your maximum bid amount is reached or the auction ends. Every bidder is bound to his bid. The sale is using the popcorn bid system/5-minute rule. Until that moment bids will be accepted.

All lots sell with reasonable starting bid. The bid increments will be as follows: < \$10,000 - \$250; \$10,000-\$20,000 - \$500; \$20,000-\$50,000 - \$1,000; \$50,000-\$100,000 - \$2,000 and > \$100,000 - \$5,000

Please refer to the terms and conditions in the back of your sale catalog for complete details.

sale managed by:



**THE BUYING STOP FOR DAIRYMEN AROUND THE WORLD**

P.O. Box 12, Fairplay, Maryland 21733-0012 USA

Ph. 240-329-0169 | Fax 240-469-4231

[info@holsteinplaza.com](mailto:info@holsteinplaza.com) | [www.holsteinplaza.com](http://www.holsteinplaza.com)

### SALES STAFF:

HOLSTEIN PLAZA

Jennifer Dingbaum +1 320-250-2412

[jennifer.dingbaum@holsteinplaza.com](mailto:jennifer.dingbaum@holsteinplaza.com)

Steve Mower +1 240-520-5906

[steve.mower@amsgenetics.com](mailto:steve.mower@amsgenetics.com)

Hendrik Albada +1 240-520-1566

[hendrik.albada@holsteinplaza.com](mailto:hendrik.albada@holsteinplaza.com)

Amanda Hauck +1 570-765-0536

[amanda.hauck@amsgenetics.com](mailto:amanda.hauck@amsgenetics.com)

Ray LeBlanc +1 802-249-2155

Nick Raggi +1 443-762-8338

Paul Trapp +1 608-332-0079

Troy Yoder +1 478-244-2172

Australia

Declan Patten +1 815-697-2700

EUROPE

Jan de Vries +31 (0)6 26250502

[jandevries@diamond-genetics.nl](mailto:jandevries@diamond-genetics.nl)

Arjan van der Vlis +31 (0)6 43985150

[arjan@eurogenes.nl](mailto:arjan@eurogenes.nl)

Alison Maddrell +44 77 48960267

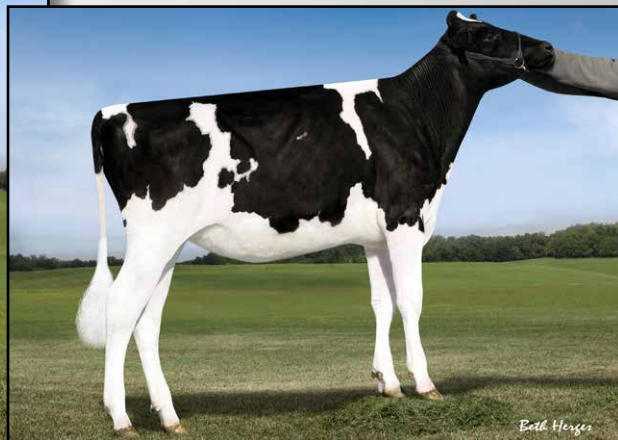
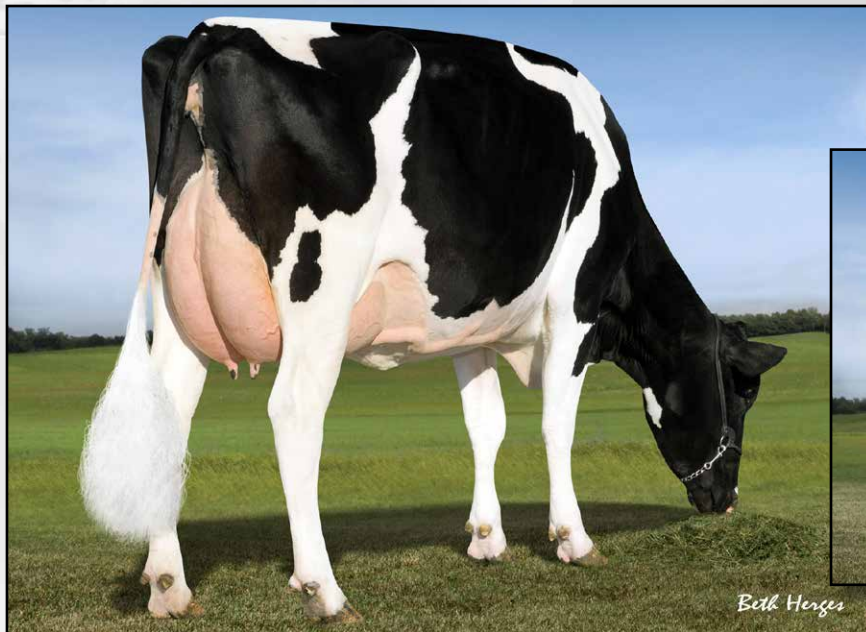
[alison@diamondgenetics.co.uk](mailto:alison@diamondgenetics.co.uk)



### MANAGEMENT/TRANSPORT:

All auction sales will be handled through AMS Genetics International. AMS will also assist as needed in transport coordination. Transport is the cost of the buyer and will not be allowed until payment has been made. For foreign buyers, AMS Genetics can assist with housing and management of purchases.

HOUSING CONTACT: Steve Mower 240-520-5906



PINE-TREE 2149ROBST 4846  
2ND DAM OF LOT 1

VIEW-HOME MCC ALABAMA  
DAM OF LOT 1

## LOT 1

## VIEW-HOME SUNFLOWER

USA 3130853955

Born: 15-May-2015

### Holstein Plaza Contacts:

Steve Mower +1 240-520-5906  
Jennifer Dingbaum +1 320-250-2412  
Hendrik Albada +1 240-520-1566  
Amanda Hauck +1 570-765-0536

USA	Milk	Fat	Prot	SCS	DPR	PL	FLC	UDC	PTAT	DCE	NM	GTPI
8/15	+1346	+67	+49	2.75	+1.9	+6.9	+1.93	+2.05	+2.49	3.8%	+794	+2680

### Woodcrest Mogul Yoder

72254526 \*TV \*TL \*TY \*TD  
PTA +1432M +99F +55P 78%R 8/15  
PTA +5.3PL 2.98SCS +0.3DPR  
PTA +2.37T +1.85UDC +1.77FLC 78%R  
GTPI +2653G

### View-Home Mcc Alabama

72456685 Born: January 28, 2013  
GTPI+2644 +1326M +56F +43P +2.90T  
• #1 GTPI daughter of Robust 4846 (8/15)  
• Alta1stClass sold for \$103,000 at the  
National Convention Sale 2015  
• Due January 2016 and looks great!

### Mountfield SSI Dcy Mogul

3006972816 \*TR \*TV \*TL \*TY \*TD  
PTA +1411M +93F +43P 99%R 8/15  
PTA +2.58T +2.57UDC +2.65FLC  
GTPI +2570G

### Woodcrest Planet Yakara

3008363689 Very Good-85  
2-00 2x 365d 25613 4.0 1031 2.9 742

### De-Su Bkm McCutchen 1174

69990138 \*TV \*TL \*TY \*TD  
PTA +865M +48F +32P 99R 8/15  
PTA +3.21T +2.99UDC +2.58FLC  
GTPI +2468G

### Pine-Tree 2149Robst 4846

69804610 Very Good-86-2YR DOM  
2-04 2x 365d 32001 4.7 1520 3.4 1097  
• Huge Brood Cow  
• Several sons in A.I. including:  
View-Home Powerball P GTPI+2497  
View-Home Monterey GTPI+2683  
View-Home Missouri GTPI+2603  
View-Home Cashflow GTPI+2566

### 3rd thru 10th Dams

**Pine-Tree Zenith Sheen**  
VG-87 VG-MS DOM  
1-11 3x 365d 27884 3.9 1091 3.3 908  
• Maternal sister to Ammon-Peachey Shauna  
**Pine-Tree Martha Sheen-ET**  
VG-86 VG-MS DOM  
1-11 3x 365d 31210 4.2 1305 3.3 1027  
**Pine-Tree Missy Martha-ET** VG-86 DOM  
2-02 3x 365d 34730 3.6 1266 3.1 1070  
**Wesswood-HC Rudy Missy-ET**  
EX-92 3E DOM  
4-11 3x 365d 40880 4.1 1665 3.2 1308  
Life: 1262d 119610 4.1 4885 3.2 3804  
**Wesswood Elton Mimi** EX-90 GMD DOM  
3-05 2x 365d 35380 3.3 1160 3.2 1121  
**Wesswood Mandingo Ivy** VG-87 VEEVV  
6-05 2x 365d 36330 3.6 1305 3.0 1087  
Life: 1835d 144060 3.4 4933 3.1 4412  
**Wesswood Astro Matt Esther**  
VG-87 GMD DOM  
6-08 2x 365d 31860 3.5 1125 3.1 982  
Life: 1847d 140110 3.6 5029 3.2 4424  
**Wesswood Bell Claudette**  
VG-87 GMD DOM  
9-10 2x 365d 38810 3.6 1383 2.9 1140  
Life: 3634d 280980 3.6 9997 3.1 8625



REGANCREST DGR BRYSHA VG-88 EX-MS  
2ND DAM OF LOT 2



REGANCREST MAC BRESHAN VG-86-2YR DOM  
DAM OF LOT 2

## LOT 2

## HOLLENDALE SUPERSIRE RAPID

### Holstein Plaza Contacts:

Steve Mower +1 240-520-5906  
Jennifer Dingbaum +1 320-250-2412  
Hendrik Albada +1 240-520-1566  
Amanda Hauck +1 570-765-0536

USA 143340395

Ready to FLUSH!

Born: 21-January-2015

Top 10 GTPI Supersire daughter in the Breed!

USA	Milk	Fat	Prot	SCS	DPR	PL	FLC	UDC	PTAT	SCE	NM	GTPI
8/15	+1085	+84	+44	2.72	+3.5	+7.4	+1.53	+1.32	+1.92	7.7%	+821	+2689

### Seagull-Bay Supersire

143340395 \*TR\*TV\*TL\*TY\*TD  
PTA +2386M +110F +72P 99R 8/15  
PTA +7.2PL 2.94SCS +0.7DPR 4.2%DCE  
PTA +1.62T +.65UDC +.75FLC 97R 8/15  
GTPI +2715G

### EDG Brysha Uno Brca

72127341 Very Good-85-2YR VG-MS  
GTPI+2277  
2-01 2x 217d 17619 4.7 823 3.2 565 inc.

### Roylane Socra Robust

64966739 \*TR\*TV\*TL\*TD  
PTA +1074M +78F +46P 99%R 8/15  
PTA +.90T +.82UDC +1.21FLC  
GTPI +2514G

### Ammon-Peachey Shauna

66228178 Excellent-90 GMD DOM  
2-01 3x 365d 35120 4.1 1427 3.1 1079

### Amighetti Numero Uno

ITA 017990915143 \*TV\*TL\*TY\*TD  
PTA -398M +63F +3P 99R 8/15  
PTA +2.21T +2.30UDC +1.43FLC  
GTPI +2407G

### Regancrest Dgr Brysha

66625568 Very Good-88 EX-MS @ 4-02  
2-06 305 24520 3.2 783 3.2 789  
• Multiple sons in A.I.  
• Sired by Ronelee Gold Digger

### 3rd thru 11th Dams

#### Regancrest Mac Breshan

VG-86 VG-MS DOM  
3-09 365d 34780 3.9 1348 3.4 1175

#### Regancrest Breeshia

#### Regancrest-PR Barbie-ET

EX-92 GMD DOM  
2-06 2x 365d 31690 3.9 1237 3.1 990  
• HM All-American Junior 3-Yr Old 2004  
• Former #1 Type Cow

#### Regancrest Juror Brina-ET EX-92 GMD

4-04 2x 365d 40640 3.6 1478 2.8 1140  
• Member Nom AA Best 3 Females 2000  
• Res Grand Champ Iowa State Show 2000

#### Regancrest Aerostar Bert-ET

EX-90 GMD DOM  
5-02 2x 365d 37790 3.6 1357 3.0 1143  
Life: 1305d 109350 3.7 4031 3.1 3350

#### Regancrest Mark Chairman Bea

EX-91 2E GMD  
7-09 2x 365d 33630 3.8 1276 2.9 988  
Life: 2036d 140130 4.1 5711 3.1 4350

#### Regancrest Board Chairman Bea EX-90

5-09 2x 365d 26010 4.1 1059 3.2 835

#### Regancrest Apache Standout Bea VG-86

4-10 2x 320d 19070 4.0 766  
Life: 2432d 131940 3.6 4744

#### Regancrest Standout Bertrand VG-85

4-01 2x 355d 17460 3.3 571



MS D APPLE DANIELLE-RED EX-94 95-MS  
DAM OF LOT 3

KHW REGIMENT APPLE-RED EX-96 3E DOM  
3RD DAM OF LOT 3

## LOT 3

## MS DANIELLE DREAMER \*RC

USA 72713025

Born: 6-June-2015

### Holstein Plaza Contacts:

Steve Mower +1 240-520-5906  
Jennifer Dingbaum +1 320-250-2412  
Hendrik Albada +1 240-520-1566  
Amanda Hauck +1 570-765-0536

USA	Milk	Fat	Prot	SCS	DPR	PL	FLC	UDC	PTAT	SCE	NM	GTPI
8/15	-133	+4	+3	2.77	+1.5	+3.8	+2.14	+3.93	+3.75	7.9%	+305	+2231

### Stantons High Octane

11696704C \*TV \*TL \*TY \*TD  
PTA +1496M +46F +37P 78%R 8/15  
PTA +500NM\$ +3.0PL 2.73SCS +.3DPR  
PTA +3.41T +3.34UDC +1.94FLC 77%R  
GTPI +2465G

### Ms D Apple Danielle-Red

69822207 Excellent-94-USA 95-MS  
GTPI+1884 +2.90UDC +1.57FLC +2.95T  
3-11 2x 305d 29140 3.8 1112 3.4 997  
• Re Grand Champ, All-American R&W 2015  
• Senior Champion & 1st 4-Yr-Old,  
All-American R&W Show 2015  
• Grand Champ, NY Spring Int'l 2015  
• HM All-American Sr. 3-Yr-Old 2014  
• 3rd Sr. 3-Yr-Old Int'l R&W Show 2014  
• NASCO Type & Production Winner 2014  
• 1st Sr. 3-Yr-Old, All-American R&W 2014  
• Gr Champ, All-American R&W Show 2014  
• Nominated All-American Sr. 2-Yr-Old 2013

### De-Su Bkm McCutchen 1174

69990138 \*TV \*TL \*TY \*TD  
PTA +865M +48F +32P 99R 8/15  
PTA +3.21T +2.99UDC +2.58FLC  
GTPI +2468G

### Ms Chassity Obs Claire

141008075 Very Good-87-2YR-CAN  
1-10 3x 365d 43546 3.7 1625 2.9 1263

### Scientific Destry \*RC

138122625 \*RC \*TV \*TL \*TY  
PTA -696M -20F -1P 99%R 8/15  
PTA +2.01T +2.09UDC +.47FLC  
GTPI +1928G

### Ms Delicious Apple-Red

139236776 Excellent-94 2E EEEEE \*TV  
2-02 2x 365d 26460 3.9 1036 3.3 871  
4-03 2x 365d 37621 3.7 1395 3.0 1156  
• Res All-American R&W Aged Cow 2014  
• Member All-American Dam/Daughter 2014  
• Nom All-American Jr. 2-Yr-Old 2010  
• Dam of: Mr D Apple Diamondback \*RC

### 3rd thru 9th Dams

#### KHW Regiment Apple-Red

EX-96 3E DOM  
9-01 2x 365d 36750 4.3 1582 3.3 1211  
Life: 2337d 195430 4.7 9265 3.6 6946  
• 2013 HI Red Impact Cow of the Year  
• All-American R&W 125,000 Cow 2013  
• Res. Sr. & Res. Grand Int'l R&W Show 2013  
• Grand Champion Int'l R&W Show 2011  
• All-American R&W Aged Cow 2011  
• HI World Champion R&W Cow 2010  
• Unanimous All-American Jr-2-Yr-Old 2006

#### Kamps-Hollow Altitude-ET E

X-95 2E DOM  
7-00 2x 305d 34450 4.5 1562 3.4 1163  
• Red Impact Cow of the Year 2009  
Clover-Mist Alisha-ET \*RC EX-93 3E DOM  
8-07 2x 365d 36920 4.2 1553 3.4 1258  
Life: 2999d 226470 4.7 10659 3.6 8149

#### Clover-Mist Augy Star-ET \*RC

EX-94 4E DOM  
7-10 3x 365d 43140 5.0 2136 3.3 1421  
Life: 2486d 206250 4.7 9793 3.5 7187

#### D-R-A August EX-96 EEEE 4E DOM

8-05 2x 365d 27460 4.3 1187 3.2 871  
Life: 3443d 190200 4.4 8281 3.3 4457  
• Nominated All-American Aged Cow 1986  
D-R-A Ideal Precious Leader EX-90 2E  
7-06 2x 358d 20090 3.9 787 3.4 675  
D-R-A Princess Lad Leader EX-90 3E  
9-05 2x 305d 19160 4.2 809



SAVAGE-LEIGH LAKISHA  
LOT 4

SAVAGE-LEIGH LEONA EX-96 EEEEE  
DAM OF LOT 4

## LOT 4

## SAVAGE-LEIGH LAKISHA

USA 3007810661

Born: 20-December-2014

### Holstein Plaza Contacts:

Steve Mower +1 240-520-5906  
Jennifer Dingbaum +1 320-250-2412  
Hendrik Albada +1 240-520-1566  
Amanda Hauck +1 570-765-0536

### Full sisters to Lot 4

**Savage-Leigh Golden Girl-ET** VG-88-2YR  
• Reserve All-American Milking Fall Yrlg 2014  
• Reserve Jr. All-American Milking Fall Yrlg 2014  
**Savage-Leigh Gold Lala**  
• HM Junior Champ, Eastern Fall National 2015  
• Supreme Champ Heifer Premier Nat'l Jr 2015

### Braedale Goldwyn

10705608 GP-CAN EX'05 GM 8/08 \*TL  
PTA -350M +14F +2P 99%R 8/15  
PTA +126NM\$ -0.4PL 2.73SCS  
PTA +1.83T +1.51UDC +1.55FLC  
GTPI +1889G

### Savage-Leigh Leona-ET

61604187 Excellent-96 EEEEE 2E GMD  
5-05 2x 365d 42050 4.3 1796 3.2 1343  
Life: 2244d 208360 4.1 8644 3.4 7052  
• Nom All-American 125,000 lb Cow 2014  
• Nom All-American 125,000 lb Cow 2013  
• Res All-American 125,000 lb Cow 2012  
• Grand Champion, Eastern Fall Nat'l 2012  
• Res Senior Champ, Eastern Fall Nat'l 2011  
• Nom All-American & All-Canadian 2010  
• 6th Jr 3-Yr Old, Int'l Holstein Show 2008  
• HHM All-American Jr 2-Yr Old 2007

### Shoremar James

5902195C GP-81-CAN GM 2/04 \*TV \*TL  
PTA -957M -9F -8P 99%R 8/15  
PTA -.34T -.37UDC -.57FLC  
GTPI +1252G

### Braedale Baler Twine

6860888C Very Good-86-CAN 33\*  
2-01 2x 365d 30906 4.9 1521 3.4 1052

### Canyon-Breeze Allen-ET

17129288 \*TV  
PTA -835M -14F -15P 99%R 8/15  
PTA +1.26T +.40UDC +1.11FLC  
GTPI +1372G

### Savage-Leigh Licorice-ET

60317090 Excellent-92 GMD DOM  
4-02 2x 365d 51220 4.3 2179 3.3 1693  
Life: 1018d 113740 4.4 4968 3.4 3858  
• Nominated All-American 2006  
• HHM All-American 5-Yr Old Cow 2006  
• Nom All-American Produce 2011 & 2012

### 3rd thru 8th Dams

#### Savage-Leigh Bellwood Linda

EX-92 2E GMD DOM  
2-10 2x 365d 40240 5.8 2349 3.4 1358  
Life: 1312d 126760 5.2 6576 3.2 4076  
• Nom All-American Jr. 3-Year-Old 1999  
• Nom Global Cow of the Year 2005

#### Savage-Leigh Star Linda-ET

VG-87 GMD

2-02 2x 365d 30890 4.0 1236 3.1 952  
**Savage-Leigh Glenview Linda**  
EX-90 EVVE GMD DOM  
6-08 2x 365d 41820 4.6 1936 3.0 1247  
Life: 1892d 150300 4.4 6636 3.2 4813

#### Savage-Leigh Lindas Chairman

GP-84  
5-10 2x 365d 30620 3.8 1167 3.3 1013  
Life: 1972d 121550 3.9 4718 3.3 4013

#### Savage-Leigh Creek Lydia

VG-88  
4-11 2x 344d 16390 4.2 685 3.1 511

#### Savage-Leigh Kate Linda

VG-85  
6-01 2x 305d 19940 4.0 793



**ROORDA SHOTTLE 6802 VG-88 DOM**  
3RD DAM LOT 5



**ROORDA SS MCCARI 15884**  
DAM OF LOT 5

## LOT 5

## WFC TROY MCCARI 9789

USA 3125945311

Born: 25-June-2015

### Holstein Plaza Contacts:

Steve Mower +1 240-520-5906  
Jennifer Dingbaum +1 320-250-2412  
Hendrik Albada +1 240-520-1566  
Amanda Hauck +1 570-765-0536

USA	Milk	Fat	Prot	SCS	DPR	PL	FLC	UDC	PTAT	SCE	NM	GTPI
8/15	+1580	+78	+57	2.87	+3.0	+7.5	+0.79	+1.12	+1.26	7.4%	+832	+2627

### River-Bridge Co-Op Troy

71753166 \*TV \*TL \*TY \*TD  
PTA +1112M +62F +42P 78%R 8/15  
PTA +8.2PL 2.74SCS +3.0DPR 5.4%DCE  
PTA +1.63T +1.51UDC +1.81FLC 76%R  
GTPI +2602G

### Roorda SS McCari 15884

71013758 Very Good-85-2YR  
2-04 2x 110d 9334 4.9 457 23.1 292 inc.  
• Sons at Jetstream and Semex

### Mountfield SSI Dcy Mogul

3006972816 \*TR \*TV \*TL \*TY \*TD  
PTA +1411M +93F +43P 99%R 8/15  
PTA +2.58T +2.57UDC +2.65FLC  
GTPI +2570G

### Co-Op Rb Freddie Tinley

69908630 Very Good-85  
1-11 2x 365d 25800 3.7 959 3.1 788

### Seagull-Bay Supersire-ET

69981349 \*TV \*TL \*TY \*TD  
PTA +2386M +110F +72P 99R 8/15  
PTA +1.62T +0.65UDC +0.75FLC  
GTPI +2715G

### Roorda Ob McKenzie 15267

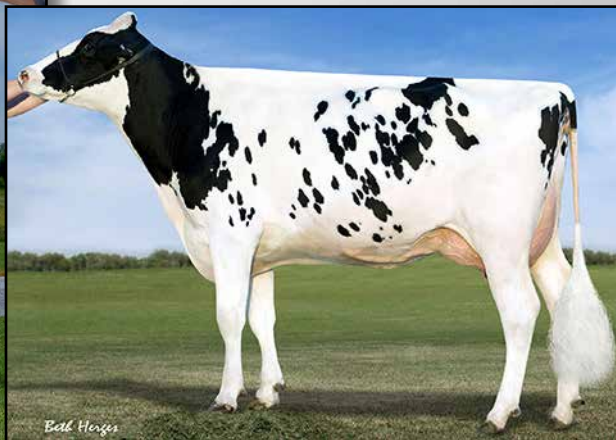
70338772

### 3rd thru 10th Dams

**Roorda Shottle 6802-ET VG-88 DOM**  
2-00 3x 365d 32590 3.6 1180 3.1 1000  
**Seagull-Bay Manat Mirage-ET EX-90 DOM**  
3-06 3x 365d 35900 3.8 1364 3.2 1161  
**Lynmead Celsius Minnow-ET**  
EX-91 2E GMD DOM  
4-10 3x 365d 49550 3.7 1857 3.2 1592  
Life: 2626d 255910 3.7 9446 3.3 8481  
**CMV Melwood Mindy-ET VG-85 DOM**  
4-01 2x 365d 36340 3.6 1306 3.4 1238  
**Briarpatch-R Misty VG-85 GMD DOM**  
3-08 2x 365d 24690 4.1 1011 3.2 794  
**Rilara Mars Las Ravena EX-91 GMD DOM**  
4-03 2x 305d 29030 4.6 1330  
**Rilara Haven Charming Las-Twin VG-87 GMD**  
6-10 2x 365d 30490 3.4 1029 2.9 877  
Life: 2442d 164400 3.4 5651 2.9 2051  
**Rag Apple Locust Grove Charm VG-86**  
5-02 2x 365d 26320 3.6 948



GTPI+2601, Balanced and backed by the ADEENS!



FARNEAR-TBR-BH VICKIE VG-87-2YR  
FULL SISTER TO DAM OF LOT 6

VISION-GEN SH SHO A12037  
2ND DAM OF LOT 6

## LOT 6

## PINE-TREE 1610 SPRI 6749

USA 74024671

Born: 11-June-2015

### Holstein Plaza Contacts:

Steve Mower +1 240-520-5906  
Jennifer Dingbaum +1 320-250-2412  
Hendrik Albada +1 240-520-1566  
Amanda Hauck +1 570-765-0536

USA	Milk	Fat	Prot	SCS	DPR	PL	FLC	UDC	PTAT	SCE	NM	GTPI
8/15	+1472	+78	+50	2.87	+1.3	+6.2	+1.45	+2.21	+2.19	9.4%	+756	+2603

### Westenrade altaSpring

NL 9490336666 \*TV \*TL \*TY \*TD  
PTA +1578M +79F +54P 78%R 8/15  
PTA +738NM\$ +4.3PL 2.99SCS +1.0DPR  
PTA +2.35T +2.78UDC +1.91FLC 76%R  
GTPI +2627G

### Farnear-TBR-BH Varsity

71290935 Very Good-87-2YR 88-MS  
GTPI+2542 +1303M +74F +49P +2.10T  
2-03 2x 199d 16954 3.9 664 3.3 566 inc.  
• One of the highest scored Supersire daughters in the BREED!  
• Dam of Pine-Tree 1610 Sprin 538  
GTPI+2802, Top 10 GTPI Bull in the BREED!  
• Dam of 534HO00043 IHG Verify  
GTPI+2668 at Jetstream Genetics,  
Top 5 Halogen son in the BREED!  
• GTPI>+2600 Defender & Halogen sons  
• Halogen son at International Protein Sires

### Mountfield SSI Dcy Mogul

3006972816 \*TR \*TV \*TL \*TY \*TD  
PTA +1411M +93F +43P 99%R 8/15  
PTA +2.58T +2.57UDC +2.65FLC  
GTPI +2570G

### Westenrade Carrera

NL 931730982 Very Good-85

### Seagull-Bay Supersire-ET

69981349 \*TV \*TL \*TY \*TD  
PTA +2386M +110F +72P 99R 8/15  
PTA +1.62T +0.65UDC +0.75FLC  
GTPI +2715G

### Vision-Gen Sh Sho A12037-ET

69517373 Very Good-87 VG-MS @ 2-09  
2-02 2x 327d 28300 3.7 1045 3.4 969  
• Sons in AI

### 3rd thru 5th Dams

**KY-Blue GW Dana-ET** EX-91 EX-MS  
4-01 2x 185d 16881 4.5 765 3.2 540  
**BVK Outside Diana-ET** EX-92 2E DOM  
5-01 2x 365d 31920 3.5 1129 3.2 1034  
Life: 1544d 107400 3.5 3708 3.3 3549  
**Ms Kingstead Chief Adeen-ET**  
EX-94 2E DOM  
3-05 2x 310d 30180 4.0 1209 3.4 1020  
Life: 1382d 100760 4.0 4010 3.4 3458  
• 2x Member All-American Produce  
• Nom All-American Jr 3-Yr Old  
• Nom All-American 4-Yr Old  
• Dam of 16 VG and 11 EX Offspring  
**C Aitkenbrae Starbuck Ada** EX-94 2E DOM  
13-8 2x 365d 25150 3.0 764 3.2 796  
2-05 2x 362d 25000 3.6 908 3.2 798  
• All-American Produce of Dam 2000  
• 1st Eastern Nat'l 3-Yr Old & Grand Ch 1990



**SAVAGE-LEIGH GOLDEN GIRL VG-88-2YR**  
DAM OF LOT 7



**SAVAGE-LEIGH LEONA EX-96**  
2ND DAM OF LOT 7

## LOT 7

## STUNNING WINDBROOK GLORY

USA 3128364977

Born: 29-December-2014

### Holstein Plaza Contacts:

Steve Mower +1 240-520-5906  
Jennifer Dingbaum +1 320-250-2412  
Hendrik Albada +1 240-520-1566  
Amanda Hauck +1 570-765-0536

### Gillette Windbrook

7816429 EX-95-CAN EXTRA<sup>10</sup> \*TV \*TL  
PTA +142M +33F +15P 99%R 8/15  
PTA +210NM\$ +.2PL 3.04SCS  
PTA +2.26T +1.32UDC +2.23FLC  
GTPI +1993G

### Savage-Leigh Golden Girl

61604187 Very Good-88-2YR  
1-11 2x 305d 20840 4.1 855 3.5 720  
• Reserve All-American Milking Fall Yrlg 2014  
• Res Jr All-American Milking Fall Yrlg 2014  
• 2nd Milking Yearling, International 2014

### Gillette Brilea F B I

8209524C EX-94-CAN EXTRA' \*TV \*TL  
PTA +991M +21F +20P 99%R 8/15  
PTA +.90T +.29UDC +.75FLC  
GTPI +1217G

### Gillette Blitz 2nd Wind

7352248C Very Good-88-CAN 34\*  
2-02 2x 365d 39096 3.6 1422 3.0 1182

### Braedale Goldwyn

10705608C \*TV \*TL \*TY  
PTA -350M +14F +2P 99%R 8/15  
PTA +1.83T +1.51UDC +1.55FLC  
GTPI +1889G

### Savage-Leigh Leona-ET

61604187 Excellent-96 EEEEE 2E GMD  
5-05 2x 365d 42050 4.3 1796 3.2 1343  
Life: 2244d 208360 4.1 8644 3.4 7052  
• Nom All-American 125,000 lb Cow 2014  
• Nom All-American 125,000 lb Cow 2013  
• Res All-American 125,000 lb Cow 2012  
• Grand Champion, Eastern Fall Nat'l 2012  
• Nom All-American & All-Canadian 2010  
• HHM All-American Jr 2-Yr Old 2007

### 3rd thru 9th Dams

#### Savage-Leigh Licorice-ET

EX-92 GMD DOM  
4-02 2x 365d 51220 4.3 2179 3.3 1693  
Life: 1018d 113740 4.4 4968 3.4 3858

- Nominated All-American 2006
- HHM All-American 5-Yr Old Cow 2006
- Nom All-American Produce 2011 & 2012

#### Savage-Leigh Bellwood Linda

EX-92 2E GMD DOM  
2-10 2x 365d 40240 5.8 2349 3.4 1358  
Life: 1312d 126760 5.2 6576 3.2 4076

- Nom All-American Jr. 3-Year-Old 1999
- Nom Global Cow of the Year 2005

#### Savage-Leigh Star Linda-ET VG-87 GMD

2-02 2x 365d 30890 4.0 1236 3.1 952

#### Savage-Leigh Glenview Linda

EX-90 EVVE GMD DOM  
6-08 2x 365d 41820 4.6 1936 3.0 1247  
Life: 1892d 150300 4.4 6636 3.2 4813

#### Savage-Leigh Lindas Chairman GP-84

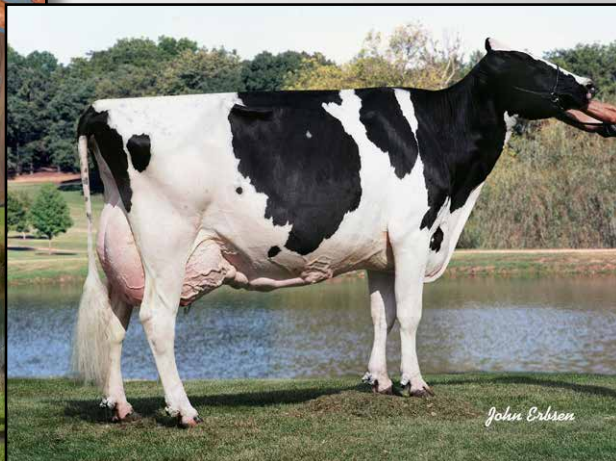
5-10 2x 365d 30620 3.8 1167 3.3 1013  
Life: 1972d 121550 3.9 4718 3.3 4013

#### Savage-Leigh Creek Lydia VG-88

4-11 2x 344d 16390 4.2 685 3.1 511

#### Savage-Leigh Kate Linda VG-85

6-01 2x 305d 19940 4.0 793



REGANCREST S DASHE VG-88  
2ND DAM LOT 8

KERNDATWAY JOLT DAISY EX-94 2E GMD DOM  
5TH DAM TO LOT 8

## LOT 8

## PINE-TREE 5611 BOMB 6458

USA 74024380

Born: 9-October-2014

### Holstein Plaza Contacts:

Steve Mower +1 240-520-5906  
Jennifer Dingbaum +1 320-250-2412  
Hendrik Albada +1 240-520-1566  
Amanda Hauck +1 570-765-0536

USA	Milk	Fat	Prot	SCS	DPR	PL	FLC	UDC	PTAT	DCE	NM	GTPI
4/15	+897	+75	+39	2.67	+0.8	+4.6	+1.18	+2.34	+2.77	5.8%	+656	+2542

### Richmond-FD El Bombero

71637328 \*TR \*TV \*TL \*TY \*TD  
PTA +980M +66F +27P 78%R 8/15  
PTA +5.3PL 2.58SCS +1.1DPR  
PTA +2.22T +1.76UDC +1.31FLC 78%R  
GTPI +2433G

### Pine-Tree Dash Mass 5611

71859189 Very Good-85-2YR VG-MS  
GTPI+2359  
2-05 2x 64d 4813 4.9 238 3.4 164 inc.  
• 1st test 81 lbs. Milk 4.9%F and 3.3%P  
• Scored VG-85-2YR VG-MS <30 days fresh

### Amighetti Numero Uno

ITA 017990915143 \*TV \*TL \*TY \*TD  
PTA -398M +63F +3P 99R 8/15  
PTA +2.21T +2.30UDC +1.43FLC  
GTPI +2407G

### Richmond-FD S Barbara

69305043 Very Good-87 DOM  
2-04 3x 365d 33460 4.2 1401 3.0 1002

### Co-Op Bosside Massey

63026939 \*TV \*TL \*TY \*TD  
PTA +757M +46F +40P 99R 8/15  
PTA +.87T +1.35UDC +.83FLC  
GTPI +2270G

### Regancrest S Dashe

66624860 Very Good-88 VG-MS  
2-01 3x 305d 26350 3.7 984 3.2 856

### 3rd thru 13th Dams

#### Premier-RCF G Dasie

EX-92 EEEEE GMD  
3-03 2x 365d 35990 4.4 1355 3.4 1217  
Life: 1334d 115860 4.3 4993 3.5 4087

#### Ernlo Daisy Jane

EX-93 EEVVEE GMD DOM  
4-06 365d 40960 4.2 1706 3.4 1400  
Life: 152370 4.1 6276 3.5 5257

#### Kerndtway Jolt Daisy

EX-94 2E GMD DOM  
5-05 365d 35090 4.3 1498 3.1 1072  
Life: 139990 4.2 5895 3.3 4571

#### Kerndway Bstar Dime EX-90 GMD DOM

Life: 167130 4.2 6978 2.9 4917

#### Kerndtway Dollar Enharcerc VG-88

3-04 365d 31270 3.8 1182 3.1 974

#### Al-Man Bell Julie VG-87 GMD DOM

3-04 2x 365d 31270 3.4 1005 3.1 906

#### Al-Man Mars Julliet EX-90

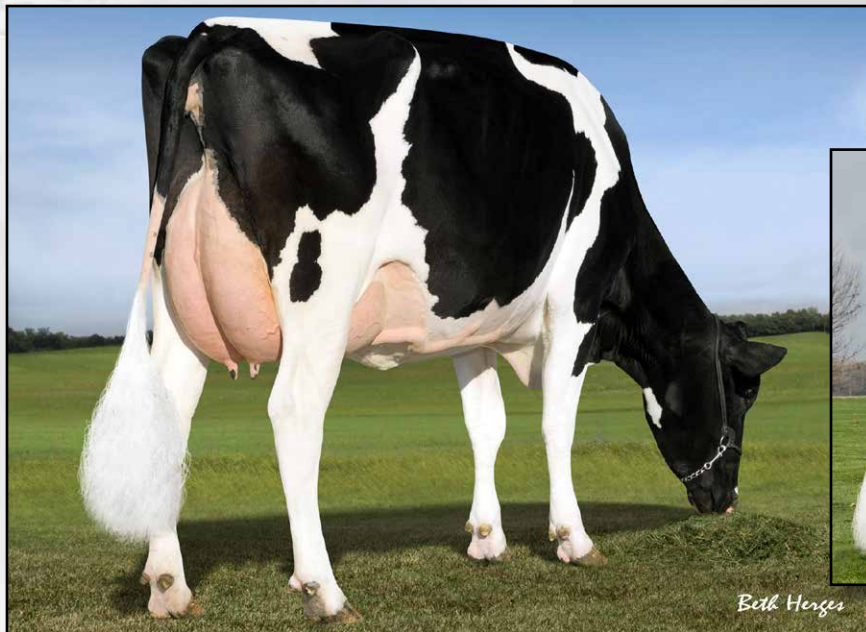
5-11 2x 365d 29610 3.4 1005 3.1 906

#### Al-Man Apollo Jessie VG-85

Al-Man Massman Commander Julie VG-85

#### Massman June Standout VG-85

Al-Man Jewel Homestead VG-87



*Both Henges*



*Both Henges*

**PINE-TREE 2149ROBST 4846**  
DAM OF LOT 9

**AMMON-PEACHEY SHAUNA EX-90 GMD DOM**  
MATERNAL SISTER TO 2ND DAM OF LOT 9

## LOT 9

## VIEW-HOME MRDIAN IOWA

USA 72612876 Born: 22-March-2013  
2-04 2x 84d 7808 4.0 310 3.1 240 inc.

### Holstein Plaza Contacts:

Steve Mower +1 240-520-5906  
Jennifer Dingbaum +1 320-250-2412  
Hendrik Albada +1 240-520-1566  
Amanda Hauck +1 570-765-0536

USA	Milk	Fat	Prot	SCS	DPR	PL	FLC	UDC	PTAT	SCE	NM	GTPI
8/15	+1849	+54	+49	2.84	+2.2	+6.2	+0.42	+2.07	+2.23	6.8%	+689	+2547

### Sully Hart Meridian

69951907 \*TY \*TD  
PTA +1865M +31F +46P 97%R 8/15  
PTA +3.0PL 2.99SCS +0.4DPR  
PTA +2.87T +2.66UDC +.59FLC 96%R  
GTPI +2333G

### Pine-Tree 2149Robst 4846

69804610 Very Good-86-2YR DOM  
2-04 2x 365d 32001 4.7 1520 3.4 1097  
• *Huge Brood Cow*  
• *Several sons in A.I. including:*  
*View-Home Powerball P GTPI+2497*  
*View-Home Monterey GTPI+2683*  
*View-Home Missouri GTPI+2603*  
*View-Home Cashflow GTPI+2566*

### Ronelee Toystory Domain

137974489 \*TV \*TL \*TY \*TD  
PTA +717M -7F +14P 99%R 8/15  
PTA +1.20T +1.51UDC +.28FLC  
GTPI +1911G

### Sully Planet Manitoba

3008363689 Very Good-85-CAN DOM  
4-03 3x 365d 43669 3.6 1565 3.2 1402

### Roylane Socra Robust

64966739 \*TR \*TV \*TL \*TD  
PTA +1074M +78F +46P 99%R 8/15  
PTA +.90T +.82UDC +1.21FLC  
GTPI +2514G

### Pine-Tree Zenith Sheen

64350530 Very Good-87 VG-MS DOM  
1-11 3x 365d 27884 3.9 1091 3.3 908

• *Maternal sister to:*

### Ammon-Peachey Shauna

EX-90 GMD DOM  
*Dam to Supersire, Headliner, Platinum,  
Diamond, Sargeant, MVP and many more!*

### 3rd thru 9th Dams

#### Pine-Tree Martha Sheen-ET

VG-86 VG-MS DOM  
1-11 3x 365d 31210 4.2 1305 3.3 1027

#### Pine-Tree Missy Martha-ET VG-86 DOM

2-02 3x 365d 34730 3.6 1266 3.1 1070

#### Wesswood-HC Rudy Missy-ET

EX-92 3E DOM  
4-11 3x 365d 40880 4.1 1665 3.2 1308  
Life: 1262d 119610 4.1 4885 3.2 3804

#### Wesswood Elton Mimi EX-90 GMD DOM

3-05 2x 365d 35380 3.3 1160 3.2 1121

#### Wesswood Mandingo Ivy VG-87 VEEVV

6-05 2x 365d 36330 3.6 1305 3.0 1087  
Life: 1835d 144060 3.4 4933 3.1 4412

#### Wesswood Astro Matt Esther

VG-87 GMD DOM  
6-08 2x 365d 31860 3.5 1125 3.1 982  
Life: 1847d 140110 3.6 5029 3.2 4424

#### Wesswood Bell Claudette

VG-87 GMD DOM  
9-10 2x 365d 38810 3.6 1383 2.9 1140  
Life: 3634d 280980 3.6 9997 3.1 8625



JOOK EFFECT P 9179 \*P \*RC  
DAM OF LOT 10



CLEAR-ECHO 822 RAMO 1200  
3RD DAM OF LOT 10

## LOT 10

## PASSION MONTEREY JOLIE \*POC

CAN 109023504

Born: 11-January-2015

### Holstein Plaza Contacts:

Steve Mower +1 240-520-5906  
Jennifer Dingbaum +1 320-250-2412  
Hendrik Albada +1 240-520-1566  
Amanda Hauck +1 570-765-0536

USA	Milk	Fat	Prot	SCS	DPR	PL	FLC	UDC	PTAT	DCE	NM	GTPI
8/15	+617	+46	+28	2.58	+0.8	+5.8	+2.04	+1.86	+1.95	6.7%	+558	+2372

### View-Home Monterey

68087180 \*TV \*TL \*TY \*TD  
PTA +1080M +66F +47P 78%R 8/15  
PTA +739NM\$ +6.2PL 2.92SCS +1.4DPR  
PTA +3.26T +3.12UDC +2.14FLC 78%R  
GTPI +2683G

### Jook Effect P 9179 \*P \*RC

3011653328 Born: April 23, 2013  
• Fresh and looks great  
• Her First Choice Female Monterey sold for \$30,500 at Day at the Derby Sale

### De-Su Bkm McCutchen 1174

69990138 \*TV \*TL \*TY \*TD  
PTA +865M +48F +32P 99R 8/15  
PTA +3.21T +2.99UDC +2.58FLC  
GTPI +2468G

### Pine-Tree 2149Robst 4846

69804610 Very Good-86-2YR DOM  
2-04 2x 365d 32001 4.7 1520 3.4 1097

### Lirr Special Effect P-Red

70504985 \*PO \*TV \*TL \*TY \*TD  
PTA -785M +4F -11P 90%R 8/15  
PTA +.64T +1.60UDC +.89FLC  
GTPI +1924G

### Clear-Echo Custom 2418

68670018 Very Good-85-2YR VG-MS  
1-08 3x 308d 26610 4.0 1070 2.7 714  
• Sired by: Larcrest Custom

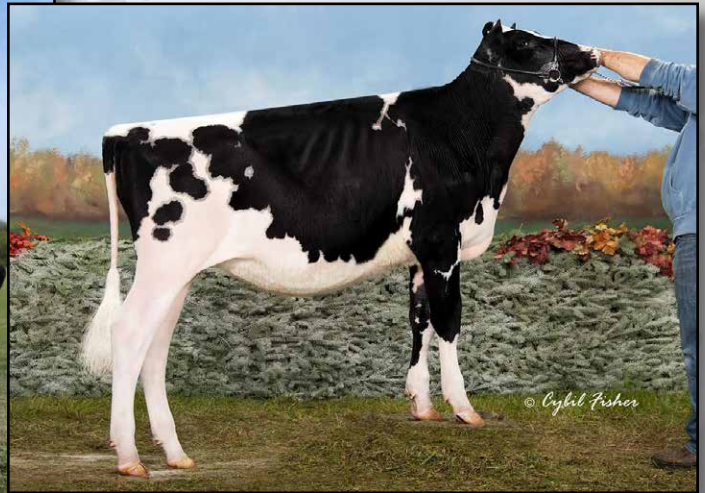
### 3rd thru 12th Dams

**Clear-Echo 822 Ramo 1200-ET**  
EX-94 EEEEE 2E DOM  
4-04 3x 365d 39570 4.5 1782 3.0 1177  
• Numerous sons in A.I.  
• Full sister to the dam of Bookem  
**Clear-Echo Hersh D-Rac 822 VG-87 DOM**  
4-05 3x 365d 40830 3.1 1275 2.8 1158  
Life: 1641d 152450 3.1 4692 2.8 4343  
**Clear-Echo Decisn L-Rac 505**  
VG-86 GMD DOM  
5-01 2x 365d 39390 3.9 1528 3.1 1232  
Life: 1849d 150760 4.2 6372 3.2 4823  
**Clear-Echo Lily Rac 264-ET GP-84 DOM**  
2-11 2x 365d 32980 4.3 1410 3.3 1075  
Life: 1424d 110650 4.5 5013 3.3 3651  
**Clear-Echo Jab Racer 45-ET**  
GP-82 GMD DOM  
3-02 3x 365d 34120 4.0 1355 3.3 1127  
**Clear-Echo Mascot Racer-ET GP-82**  
3-06 3x 320d 31190 4.0 1242 3.0 932  
Life: 1553d 115380 4.3 4920 3.2 3694  
**Clear-Echo Troy Frivolous**  
VG-86 GMD DOM  
4-04 2x 365d 29860 4.3 1283 3.2 952  
Life: 1490d 112040 4.1 4636 3.0 3408  
**Clear-Echo Apostle Inez EX-90**  
9-02 2x 307d 27450 4.0 1099 2.8 772  
**Kings-Ransom Glarus Ingrid VG-87**  
7-03 2x 305d 19780 3.8 744



Both Henges

SILVERMAPLE DAMION CAMOMILE EX-95  
DAM OF LOT 11



© Crystal Fisher

BUTLERVIEW DOORMAN CLASS  
MATERNAL SISTER TO LOT 11

## LOT 11

## BUTLERVIEW 1STCLASS CHER

USA 3128968090

Born: 27-April-2015

### Holstein Plaza Contacts:

Steve Mower +1 240-520-5906  
Jennifer Dingbaum +1 320-250-2412  
Hendrik Albada +1 240-520-1566  
Amanda Hauck +1 570-765-0536

USA	Milk	Fat	Prot	SCS	DPR	PL	FLC	UDC	PTAT	DCE	NM	GTPI
8/15	-223	+23	+10	2.80	-0.4	+1.5	+1.64	+3.14	+3.24	7.7%	+267	+2120
CAN	Milk	Fat	Prot	HL	SCS	Fert	CA	FLC	UDC	Conf.		GLPI
8/15	+164	+39	+28	107	2.78	103	99	+9	+19	+17		+2855

### Zahbulls alta 1stClass

71441918 \*TV \*TL \*TY \*TD  
PTA +465M +64F +23P 78R 8/15  
PTA +5.4PL 2.66SCS +1.5DPR 6.2%DCE  
PTA +2.85T +3.28UDC +2.25FLC 78R 8/15  
GTPI +2524G

### Silvermaple Damion Camomile

9732453C Excellent-95 EEEEE  
3-03 2x 365d 32269 4.1 1327 3.6 1160  
2-03 2x 313d 20119 4.0 796 3.5 705  
• Grand Champion BC Spring Show 2012  
• 1st 4-Yr-Old Cow BC Spring Show 2012  
• All-Canadian Jr 3-Yr-Old Cow 2011  
• All-American Jr 3-Yr-Old Cow 2011  
• Int Champion Royal Winter Fair 2011  
• Int Champion International Show 2011  
• Res Grand Champion Int'l Show 2011  
• All-American Jr 2-Yr-Old Cow 2010  
• All-Canadian Jr 2-Yr-Old Cow 2010

### Amighetti Numero Uno

ITA 017990915143 \*TV \*TL \*TY \*TD  
PTA -398M +63F +3P 99R 8/15  
PTA +2.21T +2.30UDC +1.43FLC  
GTPI +2407G

### Zahbulls Dorcy Glamour

69551522 Good Plus-83  
2-01 2x 365d 25850 4.4 1146 3.1 801

### Erbacres Damion

130263722 \*TR \*TV \*TL \*TY \*TD  
PTA -867M -70F -13P 99%R 8/15  
PTA +2.10T +1.13UDC +2.29FLC  
GTPI +1462G

### Stanhope Camila Goldwyn

7807926C Very Good-85-CAN  
4-01 2x 365d 30461 4.9 1486 3.3 1010  
3-01 2x 321d 22399 4.5 1003 3.5 791  
2-01 2x 340d 20697 4.4 913 3.4 697

### Maternal sisters to Cher:

Silvermaple Bolton Cameo EX-91

Butlerview Door Camilla

- Junior Champion, Western Spring Nat'l 2015
- Junior All-American Winter Calf 2014
- Nom All-American Winter Calf 2014
- 1st Winter Calf, Int'l Junior Holstein 2014
- 5th Winter Calf, International Show 2014

Butlerview Doorman Class

- Junior Champ, WI Championship Show 2015
- 3rd Spring Calf, International Show 2014
- HM All-American Spring Calf 2014

Silvermaple Windham Camile VG-89

- HM Grand Champion, CA State Show 2015
- Sold for \$81,000 in East-West Connection Sale

### 3rd Dam

Kendu Triumphant Charity EX-93-CAN 3\*

- 3-04 2x 365d 28519 3.7 1065 3.1 888
- HM Grand Champ Vancouver Island 2006
  - 3rd 4-Yr-Old Cow Saskatoon Expo 2005
  - 3rd 4-Yr-Old Cow Central Fraser Valley 2005



AMLAIRD LEE ALICA EX-94 2E  
2ND DAM OF LOT 12



MILKSOURCE SHOCK AFFAIR EX-90  
DAM OF LOT 12

## LOT 12

## STUNNING CORVETT ACTRESS

USA 3128648914

Born: 15-December-2014

### Holstein Plaza Contacts:

Steve Mower +1 240-520-5906  
Jennifer Dingbaum +1 320-250-2412  
Hendrik Albada +1 240-520-1566  
Amanda Hauck +1 570-765-0536

### Sonnek GC Corvette-ET

71391400 \*TV \*TL \*TY \*TD  
PTA -105M +7F +1P 78%R 8/15  
PTA -0.6PL 2.74SCS -1.2DPR  
PTA +2.87T +2.05UDC +2.81FLC 79%R  
GTPI +1952G

### Milksource Shock Affair-ET

69954137 Excellent-90 EX-MS  
2-04 2x 365d 22290 4.5 1002 3.3 730  
• Scored only 3 weeks fresh!  
• Res Jr Champion, GA National Fair 2012  
• From 3 Generations of EX-94 2E cows

### Mr Chassity Gold Chip-ET

140145553 100%RHA-NA \*TR \*TV \*TL  
PTA -325M +1F -23P 99%R 8/15  
PTA +2.38T +2.44UDC +2.19FLC 99%R  
GTPI +1858G

### Sonnek Damion Charlie-ET

138545776 Excellent-94 EEEEE  
3-04 2x 365d 26240 4.0 1050 3.5 992

### Ms Atlees Sht Aftershock

65249839 \*TV \*TL \*TY \*TD  
PTA +37M +5F -12P 99%R 8/15  
PTA +2.26T +1.85UDC +1.37FLC 99%R  
GTPI +1751G

### Amlaird Lee Alice-ET

7293258C Excellent-94 EEEEE 2E  
7-05 2x 365d 36980 5.0 1837 3.2 1186  
4-02 2x 365d 31530 4.8 1500 3.2 1008  
Life: 2059d 129610 4.8 6177 3.3 4334  
• All-American Junior 2-Year-Old 2003

### 3rd thru 4th Dams

#### Ms Kingstead Chief Adeen-ET

EX-94 2E DOM  
3-05 2x 310d 30180 4.0 1209 3.4 1020  
Life: 1382d 100760 4.0 4010 3.4 3458  
• 2x Member All-American Produce  
• Nom All-American Jr 3-Yr Old  
• Nom All-American 4-Yr Old  
• Dam of 16 VG and 11 EX Offspring

#### Full Sister:

#### Shoremar S Alicia EX-97 3E EEEEE DOM

6-10 365d 35760 4.3 1544 3.4 1214  
8-11 362d 38250 4.3 1650 3.3 1270  
Life: 185002 4.2 7731 3.4 6288  
• 27th cow in the breed to go EX-97  
• Res. All-American 125,000 cow '14  
• All-World & Peoples Choice Winner '02  
• HHM All-Time All-American 5-Yr-Old  
• 3x All-Canadian & 3x All-American  
C Aitkenbrae Starbuck Ada EX-94 2E DOM  
13-8 2x 365d 25150 3.0 764 3.2 796  
• All-American Produce of Dam 2000  
• 1st Eastern Nat'l 3-Yr Old & Grand Ch 1990

Flush-Age, +50P, +2.42T from Locket EX-94 95-MS!



**GLORYLAND-I LOCKET EX-94 95-MS**  
DAM OF LOT 13



**WALKERBRAE GOLDWYN LOCKET VG-2YR**  
MATERNAL SISTER TO LOT 13

## LOT 13

## GOLDEN-OAKS M LOREN

USA 3013874256

Born: 02-November-2014

Ready to FLUSH!

### Holstein Plaza Contacts:

Steve Mower +1 240-520-5906  
Jennifer Dingbaum +1 320-250-2412  
Hendrik Albada +1 240-520-1566  
Amanda Hauck +1 570-765-0536

USA	Milk	Fat	Prot	SCS	DPR	PL	FLC	UDC	PTAT	SCE	NM	GTPI
8/15	+1339	+66	+50	2.92	+0.3	+2.5	+1.37	+1.40	+2.42	7.6%	+562	+2418

### Bacon-Hill Montross-ET

7170339 \*TV \*TL \*TY \*TD  
PTA +2412M +82F +66P 78%R 8/15  
PTA +4.4PL 3.03SCS -.7DPR  
PTA +2.47T +1.72UDC +2.30FLC 78%R  
GTPI +2579G

### Gloryland-I Locket

9988715 Excellent-94 95-MS  
GTPI+2144 +2.06UDC + 1.24FLC +2.24T  
3-07 2x 365d 36640 4.3 1581 3.4 1240  
1-11 2x 365d 25011 4.9 1221 3.6 899  
• *Fantastic Brood Cow*

### Mountfield SSI Dcy Mogul

3006972816 \*TR \*TV \*TL \*TY \*TD  
PTA +1411M +93F +43P 99%R 8/15  
PTA +2.58T +2.57UDC +2.65FLC  
GTPI +2570G

### Unique-Style Bolton Money

139121711 Excellent-91 EX-MS DOM  
2-00 2x 334d 23520 3.7 871 3.3 771

### Braedale Goldwyn

10705608C \*TV \*TL \*TY  
PTA -350M +14F +2P 99%R 8/15  
PTA +1.83T +1.51UDC +1.55FLC  
GTPI +1889G

### Gloryland Lakota Rae

137410723 Very Good-88 EX-MS @ 3-02  
2-03 2x 365d 22850 3.8 587 3.3 751  
• *Sired by: Ocean-View Zenith-TW*

### 3rd thru 11th Dams

**Gloryland Liberty Rae** EX-95 3E DOM  
7-03 2x 365d 47060 4.2 1965 3.1 1482  
Life: 1671d 116380 3.7 4305 3.3 3863

• HM All-American 4-Year-Old 2005

**Gloryland Lana Rae** EX-94 2E DOM  
5-06 2x 365d 29011 4.0 1159 3.2 938  
Life: 2113d 129620 3.7 4768 3.4 4343

• 16 Excellent daughters all with EX-MS!

**Scientific Liza Rae-ET** EX-90

4-09 2x 365d 26710 2.9 786 3.3 878

**C Hanoverhill Tony Rae**

EX-96 3E GMD DOM  
6-11 2x 365d 40220 4.1 1661 3.3 1331  
Life: 2247d 166396 4.1 6904 3.4 5612

• *Grand Champion Western National 1993*

**C Hanoverhill TT Roxette-ET**

EX-94 2E GMD  
10-0 3x 365d 35040 4.3 1519 3.0 1063  
Life: 2104d 164789 4.1 6760 3.1 3587

**Mil-R-Mor Roxette** EX-CAN 30\*

Life (6 Lacs): 121418 4.7 5728

**C Glenridge Citation Roxy** EX-97 4E GMD

Life: 3620d 209784 4.5 9471

• *Queen of the Breed I and II*

**C Norton Court Model Vee** EX-90

Life: 4183d 218629 3.9 8581

• *All-American Produce of Dam 1977, '78, '79*

**Norton Court Reflection Vale** VG-85-CAN 5\*

Life (14 Lacs): 249583 3.7 9295



*Advent from the All-American Renita Rangers!*



**CARROUSEL TALNT RILEY-RED VG-89-2YR EX-MS  
DAM OF LOT 14**



**STELBRO RENITA RANGER-RED EX-94 3E  
3RD DAM OF LOT 14**

## LOT 14

## MS RILY OF ROSEDALE-RED

### Holstein Plaza Contacts:

Steve Mower +1 240-520-5906  
Jennifer Dingbaum +1 320-250-2412  
Hendrik Albada +1 240-520-1566  
Amanda Hauck +1 570-765-0536

USA 140625040 Very Good-86 VG-MS @ 3-06 Born: 1-March-2010  
3-04 2x 249d 17302 3.7 636 3.2 562  
4-03 2x 365d 29960 3.8 1136 3.4 1009  
Sells dry and ready to flush!

### KHW Kite Advent-Red

133002953 100%RHA-NA \*TV \*TL \*TD  
PTA -1245M -23F -29P 99%R 8/15  
PTA -153NM\$ +.9PL 3.10SCS  
PTA +1.66T +1.33UDC +.90FLC  
GTPI +1552G

### Carrousel Talnt Riley-Red

136323495 Very Good-89-2YR EX-MS  
2-04 2x 365d 28739 4.6 1314 3.2 906  
• All-American R&W Sr. 2-Yr-Old 2007  
• All-American R&W Winter Yrlg 2006

### Markwell Kite \*RC

128460878 \*RC \*TV \*TL  
PTA -1482M -39F -47P 99%R 8/15  
PTA +1.12T +.28UDC -.85FLC  
GTPI +936G

### Kamps-Hollow Altitude \*RC

129136431 Excellent-95 2E DOM  
Life: 1844d 144460 4.4 6295 3.7 5288

### Ladino-Park Talent-IMP \*RC

AUS 930377 EX-90 \*RC \*TV \*TL  
PTA -573M -45F -9P 99%R 12/14  
PTA +1.09T +1.26UDC +.28FLC  
GTPI +1367G

### Stelbro Renita Ranger-Red

6019019C Excellent-94 EEEEE 3E 8\*  
7-04 2x 365d 29760 3.9 1168 3.1 924  
• All-American R&W Aged Cow '01  
• Grand Champ Grand National '01, '98  
• Unanimous AA R&W 4-Yr-Old '98  
• All-American R&W Sr 2-Yr-Old Cow '96  
• All-American R&W Winter Yrlg '95

### 3rd thru 6th Dams

#### Stelbro Enhancer Ripple-Red

EX-CAN-4E 9\*  
9-05 2x 365d 31552 4.5 1413 3.2 1008  
Life (6 Lacs): 202164 4.5 9112 3.4 6867

#### Stelbro Regal Rene EX-3E-CAN 3\*

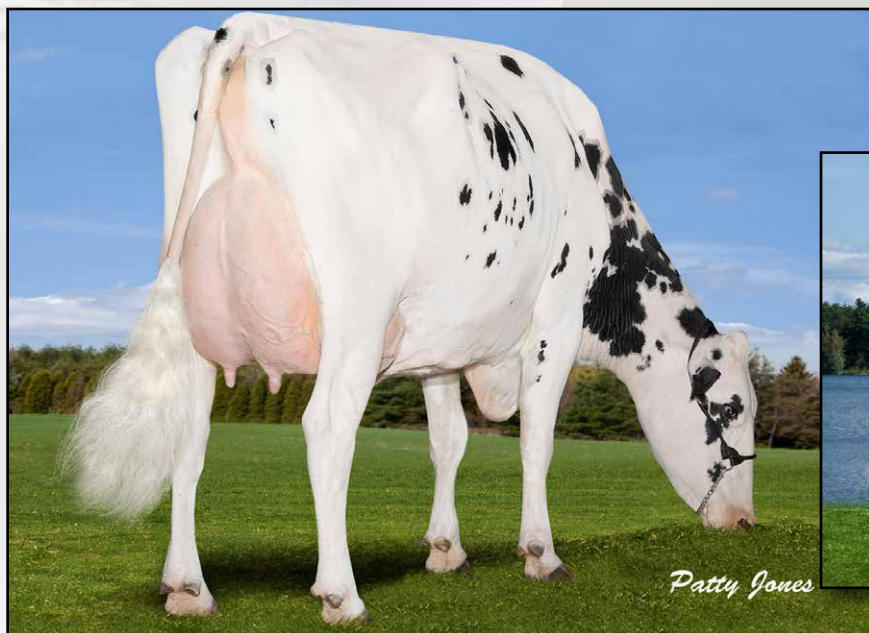
8-09 2x 364d 21874 4.1 893 3.7 805  
Life (7 Lacs): 134725 3.9 5190 3.4 4619

#### Stelbro Astra Starbrite VG-85-CAN

6-06 2x 295d 18210 3.8 699 3.5 631

#### Langstate Star VG-85-CAN

4-03 2x 292d 17996 4.3 778



**GEN-I-BEQ SHOTTLE BOMBI EX-94**  
4TH DAM OF LOT 15



**BENNER PLANET BESSIE VG-85-2YR-CAN**  
2ND DAM OF LOT 15

## LOT 15

## EDG BOO BOO JACEY 70638

USA 3010356095

Born: 10-November-2013

Due 2/14/2016 DoorsOpen Female

### Holstein Plaza Contacts:

Steve Mower +1 240-520-5906  
Jennifer Dingbaum +1 320-250-2412  
Hendrik Albada +1 240-520-1566  
Amanda Hauck +1 570-765-0536

USA	Milk	Fat	Prot	SCS	DPR	PL	FLC	UDC	PTAT	SCE	NM	GTPI
8/15	+298	+23	+36	2.76	+3.0	+3.0	+1.27	+0.49	+1.07	8.1%	+421	+2252

### Coyne-Farms Jacey CRI

70541519 \*TV \*TL \*TY \*TD  
PTA +981M +24F +41P 79%R 8/15  
PTA +3.3PL 2.61SCS +2.8DPR  
PTA +1.23T +1.24UDC +1.40FLC 78%R  
GTPI +2357G

### Benner Lavaman Boo Boo-ET

11321616 Very Good-86  
GTPI+2289 +950M +52F +41P +1.09T  
2-06 3x 305d 31610 3.7 1180 34 1059  
• Sold \$165,000 International Intrigue 2012  
• Several sons in A.I.

### Regancrest altaIota

61898306 \*TV \*TL \*TY \*TD  
PTA +487M +56F +33P 99%R 8/15  
PTA +1.42T +1.18UDC +1.01FLC  
GTPI +2220G

### Coyne-Farms Mass Jill-ET

68677629  
2-03 3x 183d 14679 2.7 399 3.0 436 inc.

### Gen-I-Beq Lavaman-ET

106363549 \*TY  
PTA -449M +22F +26P 97%R 8/15  
PTA +.63T +.59UDC +.77FLC 94%R  
GTPI +2060G

### Benner Planet Bessie

11021317 Very Good-85-2YR-CAN  
2-01 2x 365d 29818 4.2 1246 3.3 981  
• Sold for \$71,000 RockyMountain Sale 2011

### 3rd thru 13th Dams

**Mapel Wood Baxter Bethany** VG-85-2YR  
2-03 2x 365d 41325 4.6 1920 3.5 1426  
**Gen-I-Beq Shottle Bombi-ET** EX-92 94-MS  
2-01 2x 365d 31870 5.0 1609 3.4 1087  
• Former #1 GLPI Cow in Canada  
**Gen-I-Beq Champion Bambi** EX-90 4\*  
3-09 2x 365d 31638 4.1 1305 3.2 1005  
**Braedale Baler Twine-ETS** VG-86-CAN 29\*  
2-01 2x 365d 30906 4.9 1521 3.4 1052  
**Braedale Gypsy Grand** VG-88-CAN 37\*  
5-06 2x 365d 34786 4.8 1660 3.3 1135  
**Braedale Moonriver-ET**  
GP-83-2YR-CAN GP-83-3YR-JPN  
2-00 2x 365d 26012 4.1 1056 3.6 941  
**Sunnylodge Chief Vick-ET**  
VG-86-2YR-CAN 31\*  
2-04 2x 365d 31327 3.7 1146 3.4 1060  
**Sunnylodge Elevation Jan** VG-87-CAN 13\*  
10-4 2x 305d 35150 4.8 1687 4.8 1254  
Life (6 Lacs): 156959 4.3 6784 3.4 4564  
**Sunnylodge Jane Sheik** VG-85-CAN 4\*  
4-11 2x 340d 27335 4.1 1127  
**Sunnylodge Fond Vickie** VG-85-CAN 2\*  
4-06 2x 305d 23904 4.1 977  
**Sunnylodge Janice** VG-CAN 4\*  
4-08 2x 365d 27782 3.8 1047  
Life (10 Lacs): 216706 3.8 8203

EARLY & already VG-85-2YR Headliner!



LANGS-TWIN-B C-S ASHLYN EX-90 GMD DOM  
3RD DAM OF LOT 16

EDG CHRISTA HL 2066 VG-85-2YR  
LOT 16

## LOT 16

## EDG CHRISTA HL 2066

USA 72437613      Born: 24-February-2013      Very Good-85-2YR  
2-03 2x 78d 5206 3.8 199 3.2 167

### Holstein Plaza Contacts:

Steve Mower +1 240-520-5906  
Jennifer Dingbaum +1 320-250-2412  
Hendrik Albada +1 240-520-1566  
Amanda Hauck +1 570-765-0536

USA	Milk	Fat	Prot	SCS	DPR	PL	FLC	UDC	PTAT	SCE	NM	GTPI
8/15	+879	+44	+43	3.03	+1.8	+6.0	+1.05	+2.14	+2.34	8.0%	+585	+2427

### Seagull-Bay Headliner

69981350 \*TV \*TL \*TY \*TD  
PTA +1844M +77F +61P 96%R 8/15  
PTA +4.7PL 3.23SCS +.8DPR  
PTA +2.21T +1.64UDC +1.36FLC 93%R  
GTPI +2531G

### Langs-Twin-B Christa

66879944      Born: February 21, 2011  
GTPI+2220 +558M +21F +33P +1.67T  
• Several sons in A.I.

### Roylane Socra Robust

64966739 \*TR \*TV \*TL \*TD  
PTA +1074M +78F +46P 99%R 8/15  
PTA +.90T +.82UDC +1.21FLC  
GTPI +2514G

### Ammon-Peachey Shauna

66228178 EX-90 GMD DOM  
2-01 3x 365d 35120 4.1 1427 3.1 1079

### De-Su Observer

65917481 \*TR \*\*TV \*TL \*TY \*TD  
PTA +1023M +20F +29P 99%R 8/15  
PTA +1.57T +2.19UDC -.63FLC 99%R  
GTPI +2198G

### Langs-Twin-B C-S Ashlyn

62816831 Excellent-90 EX-MS GMD DOM  
7-06 2x 365d 31910 3.7 1189 3.4 1090  
2-03 2x 365d 30150 4.3 1306 3.4 1020

### 3rd thru 6th Dams

**Ralma Finley C-F Chuckle-ET**  
EX-90 GMD DOM  
2-06 2x 365d 38960 3.5 1345 3.5 1365  
**Ralma Christmas Fudge-ET**  
VG-88 GMD DOM  
2-03 2x 365d 31810 4.1 1292 3.2 1027  
**Ralma Juror Faith EX-91 GMD DOM**  
4-02 2x 365d 47860 4.5 2165 3.1 1497  
Life: 1352d 133520 4.5 5986 3.3 4358  
**Ralma Leadman Fashion VG-89**  
4-10 2x 365d 40710 3.7 1494 3.0 1232  
Life: 1243d 117710 3.6 4295 3.2 3743



# TERMS AND CONDITIONS

## GENERAL:

1. These terms are valid for all agreements made through this sale.
2. The organization of the sale is done by Holstein Plaza, part of AMS Genetics International LLC.
3. The party, which offers animals in this sale will be named after this as the "seller" and the party who buys through this sale and gets the sale item assigned, will be hereinafter identified as the "buyer".
4. The organization will only act as an intermediary in the realization from a (purchase) agreement between seller and buyer.

## HOW DOES THE SALE WORK:

1. This is a traditional English auction, which starts low and allows bidders to place progressively higher bids.
2. Each lot closes at staggering times starting at 4:00 p.m. (EST) on Thursday, October 8 and the highest bidder then wins the lot.
3. All lots sell with reasonable starting bid.
4. When you place a bid, you agree to pay for the item if you're the winning bidder.
5. There are two ways of bidding - either directly through the internet ([www.holsteinplaza.com](http://www.holsteinplaza.com)) or by contacting one of the sale staff members listed.
6. All bids are made in U.S. dollars.
7. When you place a bid, you enter the maximum amount you're willing to pay for the lot. The other bidders and the sale organization will not be able to see your maximum bid. Through this Proxy bidding system, the Holstein Plaza auction system will increase your bid to the next lowest price when another user bids on the same item. The proxy bidding process continues until your maximum bid amount is reached or the auction ends. Every bidder is bound to his bid.
8. The sale is using the popcorn bid system/5-minute rule. Until that moment bids will be accepted.
9. On disputes, which may arise during the sale, the organization decides.
10. AMS Genetics will coordinate the paperwork and transfers.

## PAYMENT:

1. Full payment for purchase is due to the sale management within 10 business days of the sale, no exceptions. The ownership stays with the seller until the complete payment of the invoiced amount has been received.
2. Sale invoices will be sent via e-mail or fax following the conclusion of the sale.
3. All live animals must be picked up or arrangements made with 20 days from the date of sale, this is the responsibility of the buyer. No cattle will be released to buyer until payment has been made. After 20 days, seller entitled to \$5.00 per day board and a monthly interest fee of 1%.
4. Upon purchase the buyer takes over the risks after payment. The calf needs to be paid within 10 days after the buyer received the invoice.
5. The payment should be made as mentioned on the invoice.
6. Claims need to be notified in writing to the seller within eight days after delivery to the buyer.

## EXCLUDING LIABILITY:

1. The organization cannot be held responsible for errors on the internet site, sale catalog or in the advertisements.
2. The organization cannot be held responsible for visual or non visual regardless the size or nature of such defect of the animals sold.
3. The organization does not take any responsibility for damage to persons or cases, which has arisen because of or connected to the sale.
4. The cow indexes mentioned therein have been calculated or converted by the herdbook in the country the donor cow is housed in accordance with the current methods. All official pedigrees of sale animals can be requested.

5. The organization of the sale can never be held responsible for the bull and embryo contracts supplied with the sale items. The responsibility of the contract is entirely for the organization supplying the contract.
6. The organization can never be held responsible in case the embryos cannot be exported no matter what reason.
7. Any special terms must be communicated with sale management prior to the close of the auction at 4:00 p.m. (EST) on Thursday, October 8.

## TERMS FOR FIRST CHOICES:

1. First choice is the selection of resulting offspring from listed pregnancies mentioned on the catalog page. Terms are as follows: 25% down within 10 days of sale; balance on possession when youngest choice reaches four months of age. Seller will provide 9K genomic testing of all resulting calves prior to selection, at buyer's request. All sales are final including purchase of first choice females; successful bidder/buyer is responsible for first and second payment.
  - a. Seller to pay all necessary registry and other applicable fees to obtain registry certificate
  - b. Seller entitled to \$5.00 per day board after 4 months, based on age of youngest calf born in the group from which the selection is made.
  - c. Should a female chosen from the respective flush fail to meet breeding guarantees, or should for any reason a female not result from a respective flush, the following steps will be taken to fulfill the purchase agreement:
    - i. Seller will offer choice of remaining ETs from the respective flush
    - ii. If, and only if, the above cannot be resolved, a full refund will be made on all payments. Disappointing genomic test results will not be accepted as a reason to cancel the purchase.

## WARRANTIES:

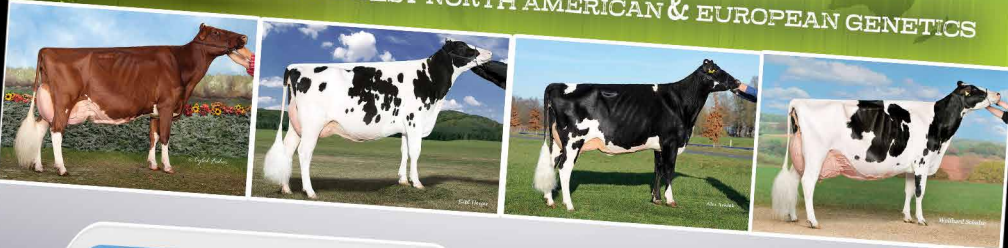
1. Each seller warrants clear title to the animal or lot, and the right to sell same.
2. To the best of the seller's knowledge, each animal is sound and healthy in every respect. Every precaution will be taken to represent the physical condition of each lot exactly as it is known. Heifers that have never calved are in no way guaranteed as to the condition of their udders following calving.
3. Breeding Warranty: The seller guarantees all animals to be breeders, but not beyond the purchase price, with the following understanding:
4. Females--Any female when sold that has freshened within 90 days prior to the date of the sale is, by that fact, considered a breeder. Should any other female when fresh over 90 days fail to become pregnant within four months of sale date, or if less than eighteen months old when sold, fails to become pregnant by the time she reaches the age of 21 months, after having been bred to a bull known to be a breeder and after having been examined or treated by a licensed veterinarian, the matter shall be reported in writing to the seller within three months of the stated limit. The seller shall then have the privilege of four months' time in which to prove the animal a breeder by service to a registered Holstein bull before refunding the purchase price or making other settlement satisfactory to the buyer.
5. Females bred when sold and pronounced in calf are presumed to be pregnant but pregnancy is not guaranteed. The seller makes no warranty that pregnant cows or heifers will deliver calves or that they will carry calves full term. If, after the sale embryos or oocytes are recovered from a female or an attempt is made to superovulate her, this negates the breeding warranty unless there is a separate written agreement between buyer and seller.

# 24/7 SHOPEMBRYO.COM

Now Open!



YOUR SOURCE FOR THE BEST NORTH AMERICAN & EUROPEAN GENETICS



Lorem ipsum dolor sit amet, consectetur adipiscing elit, sed do eiusmod tempor incididunt ut labore et dolore magna aliqua.



Lorem ipsum dolor sit amet, consectetur adipiscing elit, sed do eiusmod tempor incididunt ut labore et dolore magna aliqua.



Lorem ipsum dolor sit amet, consectetur adipiscing elit, sed do eiusmod tempor incididunt ut labore et dolore magna aliqua.



Lorem ipsum dolor sit amet, consectetur adipiscing elit, sed do eiusmod tempor incididunt ut labore et dolore magna aliqua.

NOW OPEN YOUR 24-HOUR EMBRYO WEBSHOP  
SHOPEMBRYO.COM



# HOLSTEIN PLAZA

THE BUYING STOP FOR DAIRYMEN AROUND THE WORLD

*Sold!* ... a sample of the embryos sold in previous auctions



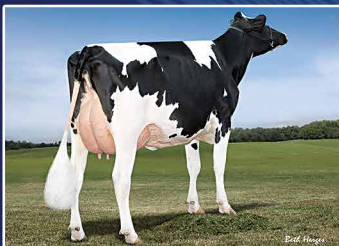
*Archrival from the Barbaras*  
SEXED Archrivals from the Door-  
man daughter of Gold Barbara



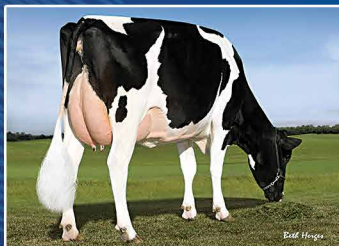
*Doorman from the Licorices*  
IVF female Doormans from the  
dam of HM Jr Champ, WDE 2014



*Windbrook from Lexington*  
Show type direct from the EX-95  
All-American Rosedale Lexington



*Comanche from the Crimson's*  
Early Comanche from the +2616G  
Supersire daughter of CALE



*Pulsar from Robst4846*  
Direct from the dam of Monterey,  
Cashflow, Powerball-P and more



*Comanche from Shaunas*  
Comanche +2672G from the maternal  
sister to SUPERSIRE, dam Shauna

**THE KIND WE SELL...** Show Type, Top Genomics, Deep Maternal Lines, Sexed, IVF, Polled, Red

*M*ake HolsteinPlaza.com your first stop for embryos! Our online auctions are held the first and third week of each month. You'll find a variety of genetics at a wide range of price points (starting at only \$300/embryo). We make buying easy... your next purchase is just a click away!

**TOP QUALITY SERVICE WITH WORLDWIDE DELIVERY**



Responsive quality service backed by the experience of AMS Genetics. We coordinate worldwide delivery so your embryos arrive quickly and carefully to their final destination.



**STEVE MOWER**  
+1 240-520-5906  
steve.mower@amsgenetics.com



**JENNIFER DINGBAUM**  
+1 320-250-2412  
jennifer.dingbaum@holsteinplaza.com



**HENDRIK ALBADA**  
+1 240-520-1566  
hendrik.albada@holsteinplaza.com

[holsteinplaza.com](http://holsteinplaza.com)



