



online heifer sale

Wednesday, June 1 through Wednesday, June 8, 2016
www.holsteinplaza.com | auction closes at 4:00 p.m. (EST)



photos © Han Hopman



Sourcing Genetics for the World

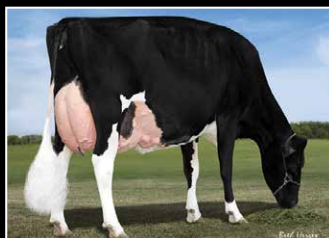


AMS Genetics can source embryos to fit your individual requirements.
If you want production or shine in the show ring AMS Genetics is your starting point!

EXAMPLES OF DONOR COWS THAT AMS GENETICS IS WORKING WITH



Arethusa Veronicas Comet EX-95
Grand Champion, Royal 2010
Daughter of EX-97 Veronica



Silvermaple Damion Camomile EX-95
Res Grand Ch, World Dairy Expo 2011
All-American nominated offspring



Ms D Apple Danielle-Red EX-94
3x All-American nominee
3rd generation EX-94 APPLE



Snowbiz Sympatico Sofia-Red VG-85
GTPI+2520 +683NMS +2.46T
No. 1 GTPI Red Cow in the World

AMS Genetics has 30 years experience in the sourcing and exportation of Holstein embryos to the world. Although many things changed over the 30 years, one thing is still constant, our commitment to our clients to provide great service and to locate and obtain the genetics that they need. If you are looking to purchase embryos to introduce new genetics into your A.I. company or your herd, AMS Genetics will be your partner in sourcing the U.S. genetic base and handling the exportation. We can adapt our selection to emphasize your selection criteria, so we focus on the genetics that will do the best job for your goals.

Services:

- Sourcing and locating embryo donors
- Herd visitation selection tours
- Contracting of donors
- Complete coordination of: embryo recovery, health certification and documentation, inland assembly and international shipment insurance
- Housing and management assistance for cattle housed in the United States
- Sire sourcing/selection for A.I. companies worldwide
- Commercial dairymen sire sourcing and selection



CONTACT INFO

AMS Genetics International LLC
Mail address: PO Box 12 | Fairplay, MD 21733-0012 USA
Office Phone: +001 240-329-0169
Steve Mower Cell: +001 240-520-5906
Email: steve.mower@amsgenetics.com

www.amsgenetics.com



www.holsteinplaza.com

ONLINE HEIFER SALE | JUNE 1-8, 2016

HOW DOES THE SALE WORK:

This is a traditional English auction, which starts low and allows bidders to place progressively higher bids. Each lot closes at staggering times (every 3 minutes) starting at 4:00 p.m. (EST) on Wednesday, June 8, and the highest bidder then wins the lot.

There are two ways of bidding - either directly through the internet (www.holsteinplaza.com) or by contacting one of the sale staff members listed. All bids are made in U.S. dollars.

When you place a bid, you enter the maximum amount you're willing to pay for the lot. The other bidders and the sale organization will not be able to see your maximum bid. Through this Proxy bidding system, the Holstein Plaza auction system will increase your bid to the next lowest price when another user bids on the same item. The proxy bidding process continues until your maximum bid amount is reached or the auction ends. Every bidder is bound to his bid. The sale is using the popcorn bid system/5-minute rule. Until that moment bids will be accepted.

All lots sell with reasonable starting bid. The bid increments will be as follows: < \$10,000 - \$250; \$10,000-\$20,000 - \$500; \$20,000-\$50,000 - \$1,000; \$50,000-\$100,000 - \$2,000 and > \$100,000 - \$5,000

Please refer to the terms and conditions in the back of your sale catalog for complete details.

sale managed by:



THE BUYING STOP FOR DAIRYMEN AROUND THE WORLD

P.O. Box 12, Fairplay, Maryland 21733-0012 USA

Ph. 240-329-0169 | Fax 240-469-4231

info@holsteinplaza.com | www.holsteinplaza.com

SALES STAFF:

HOLSTEIN PLAZA

Jennifer Dingbaum +1 320-250-2412
jennifer.dingbaum@holsteinplaza.com

Steve Mower +1 240-520-5906
steve.mower@amsgenetics.com

Hendrik Albada +1 240-520-1566
hendrik.albada@holsteinplaza.com

Amanda Hauck +1 570-765-0536
amanda.hauck@amsgenetics.com

Ray LeBlanc +1 802-249-2155

Nick Raggi +1 443-762-8338

Bill Rauen +1 563-607-0694

Austin Yoder +1 478-244-9063

AUSTRALIA

Declan Patten 011 61499 949 292

EUROPE

Jan de Vries +31 (0)6 26250502
jandevries@diamond-genetics.nl

Arjan van der Vlis +31 (0)6 43985150
arjan@eurogenes.nl

Alison Maddrell +44 77 48960267
alison@diamondgenetics.co.uk



MANAGEMENT/TRANSPORT:

All auction sales will be handled through AMS Genetics International. AMS will also assist as needed in transport coordination. Transport is the cost of the buyer and will not be allowed until payment has been made. For foreign buyers, AMS Genetics can assist with housing and management of purchases.

HOUSING CONTACT: Steve Mower 240-520-5906



OCD SUPERSIRE 9882 GP-83-2YR
DAM OF LOT 1



OCD ROBUST SHIMMER EX-90 DOM
2ND DAM OF LOT 1

LOT 1

PINE-TREE 9882 SPRI 7025-ET

840 3132116877

Born: 19-March-2016

Holstein Plaza Contacts:

Steve Mower +1 240-520-5906
Jennifer Dingbaum +1 320-250-2412
Hendrik Albada +1 240-520-1566
Amanda Hauck +1 570-765-0536

USA	Milk	Fat	Prot	SCS	DPR	PL	FLC	UDC	PTAT	DCE	NM	GTPI
4/16	+1572	+88	+52	2.74	+1.5	+6.7	+1.50	+2.33	+2.23	4.7%	+850	+2717

Westenrade AltaSpring

NL 9490336666 *TV *TL *TY *TD
PTA +1536M +76F +54P 78%R 4/16
PTA +691NM\$ +3.5PL 3.00SCS +.4DPR
PTA +2.31T +2.71UDC +1.92FLC 76%R
GTPI +2573G

OCD Supersire 9882-ET

3011890130 Good Plus-83-2YR VG-MS
GTPI+2704 +1552M +98F +60P +1.65T
2-01 3x 112d 10128 4.2 422 3.3 330 inc.

- Hottest Cow in the Breed!
- Sons in AI and many more to come!

Mountfield SSI Dcy Mogul

3006972816 *TR *TV *TL *TY *TD
PTA +1348M +90F +42P 99%R 4/16
PTA +2.51T +2.56UDC +2.64FLC
GTPI +2523G

Westenrade Carrera

NL 931730982 Very Good-85

Seagull-Bay Supersire-ET

69981349 *TV *TL *TY *TD
PTA +2464M +116F +75P 99R 4/16
PTA +1.42T +.64UDC +.44FLC
GTPI +2697G

OCD Robust Shimmer-ET

3008315320 Excellent-90 EX-MS DOM
GTPI+2401 +1313M +62F +41P +1.74T
2-03 3x 365d 34350 3.5 1200 3.2 1086

3rd thru 9th Dams

Ammon-Peachey Shana

VG-87-2YR-CAN DOM 1*
5-03 2x 365d 44802 4.3 1920 3.0 1362

- 2 Superior Lactation
- Full sister to Ammon-Peachey Shauna EX-91

Pine-Tree Martha Sheen-ET

VG-86 VG-MS DOM
1-11 3x 365d 31210 4.2 1305 3.3 1027

Pine-Tree Missy Martha-ET VG-86 DOM

2-02 3x 365d 34730 3.6 1266 3.1 1070

Wesswood-HC Rudy Missy-ET

EX-92 3E DOM
4-11 3x 365d 40880 4.1 1665 3.2 1308

Wesswood Elton Mimi EX-90 GMD DOM

3-05 2x 365d 35380 3.3 1160 3.2 1121

Wesswood Mandingo Ivy VG-87

6-05 2x 365d 36330 3.6 1305 3.0 1087
Life: 1835d 144060 3.4 4933 3.1 4412

Wesswood Astro Matt Esther

VG-87 GMD DOM
6-08 2x 365d 31860 3.5 1125 3.1 982
Life: 1847d 140110 3.6 5029 3.2 4424

Wesswood Bell Claudette

VG-87 GMD DOM
9-10 2x 365d 38810 3.6 1383 2.9 1140
Life: 3634d 280980 3.6 9997 3.1 8625



WHITE-G-D SUPERSIRE CARLEE
DAM OF LOT 2



GAF-FINE OBSERV CARLESHA VG-86-2YR
2ND DAM OF LOT 2

LOT 2

MISS CHRISTMAS EVE

USA 143669283

Born: 24-December-2015

One of the highest production females in the BREED!

Holstein Plaza Contacts:

Steve Mower +1 240-520-5906
Jennifer Dingbaum +1 320-250-2412
Hendrik Albada +1 240-520-1566
Amanda Hauck +1 570-765-0536

USA	Milk	Fat	Prot	SCS	DPR	PL	FLC	UDC	PTAT	DCE	NM	GTPI
4/16	+2237	+116	+72	3.06	-1.0	+4.6	+1.16	+1.32	+2.12	6.7%	+829	+2655

Mr Mogul Denver-ET

72128215 *TV *TL *TY *TD
PTA +2175M +101F +68P 79%R 4/16
PTA +5.7PL 3.06SCS -0.6DPR
PTA +2.33T +2.04UDC +1.77FLC 78%R
GTPI +2685G

White-G-D Supersire Carlee

70454557 Born: July 9, 2013
GTPI+2463 +1897M +99F +62P +1.47T
2-05 2x 94d 8774 3.8 333 3.1 273 inc.
• Fresh and looks great!
• Her #1 daughter SELLS!

Mountfield SSI Dcy Mogul

3006972816 *TR *TV *TL *TY *TD
PTA +1348M +90F +42P 99%R 4/16
PTA +2.51T +2.56UDC +2.64FLC
GTPI +2523G

Miss OCD Robst Delicious-ET

3006989479 VG-87 VG-MS DOM
2-05 2x 305d 25780 3.5 908 3.3 841

Seagull-Bay Supersire-ET

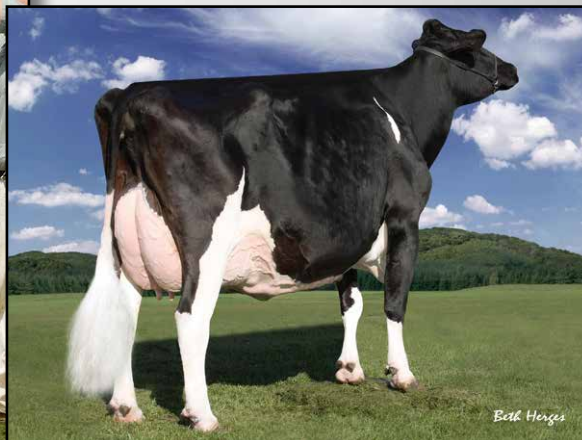
69981349 *TV *TL *TY *TD
PTA +2464M +116F +75P 99R 4/16
PTA +1.42T +.64UDC +.44FLC
GTPI +2697G

Gaf-Fine Observ Carlesha

65943592 Very Good-86-2YR VG-MS
GTPI+2188 +416M +33F +27P +1.52T
2-05 2x 365d 28690 4.0 1156 3.6 1029
• Maternal sister to Cosworth at Intermizoo

3rd thru 9th Dams

Larcrest Chessa-ET
EX-90 EVEE DOM
2-08 2x 365d 25150 4.5 1126 3.9 977
Larcrest Crimson-ET
EX-93 2E GMD DOM
5-02 2x 365d 46390 5.3 2448 3.7 1708
Life: 135610 5.0 6727 3.8 5180
Larcrest Cosmopolitan VG-87 GMD DOM
2-04 2x 365d 30930 4.1 1261 3.6 1119
Larcrest Oside Champagne-TW
EX-90 GMD DOM
2-03 2x 365d 29110 4.5 1322 3.7 1077
• 17 sons in A.I. worldwide
Larcrest Juror Chanel
EX-93 3E GMD DOM
9-00 2x 365d 48460 4.0 1943 3.4 1648
Life: 2899d 245420 4.3 10482 3.6 8866
Larcrest Lindy Chandra VG-85
2-05 2x 365d 20896 4.8 993 3.8 803
Larcrest Inspiration Carly VG-87
3-05 2x 305d 21800 4.5 973 3.3 802



MS BOYANA UNO BRINLEY VG-88-3YR
DAM OF LOT 3

REGANCREST-PR BARBIE EX-92
4TH DAM OF LOT 3

LOT 3

STUNNING-M BEEMER BLISS

840 3134356966

Born: 5-March-2016

Holstein Plaza Contacts:

Steve Mower +1 240-520-5906
Jennifer Dingbaum +1 320-250-2412
Hendrik Albada +1 240-520-1566
Amanda Hauck +1 570-765-0536

USA	Milk	Fat	Prot	SCS	DPR	PL	FLC	UDC	PTAT	DCE	NM	GTPI
4/16	+369	+47	+19	2.69	+0.5	+4.0	+3.00	+3.26	+3.75	+5.4	+505	+2444

Pol Butte Mc Beemer-ET

7525863C *TV *TL *TY *TD
PTA +851M +43F +25P 79%R 4/16
PTA -.8PL 2.87SCS -2.2DPR 5.0%DCE
PTA +3.76T +2.89UDC +2.93FLC 78%R 4/16
GTPI +2216G

Ms Boyana Uno Brinley-ET

71494817 Very Good-88 EVVVV @ 3-00
GTPI +2381 +3.24T +3.40UDC +2.32FLC
2-06 2x 328d 24070 3.7 882 3.3 790
• Fresh again and will be scored June 15
potential Excellent
• Sons in A.I.
• Numerous embryos sold & exported

De-Su Bkm McCutchen 1174-ET

69990138 *TV *TL *TY *TD
PTA +840M +54F +33P 99%R 4/16
PTA +3.19T +2.88UDC +2.59FLC
GTPI +2455G

Butz-Butler Gold Banner-ET

140145517 Very Good-88-2YR-CAN
2-06 2x 365d 33417 4.2 1409 3.1 1049

Amighetti Numero Uno-ET

ITA 17990915143 *TV *TL *TY
PTA -466M +60F +2P 99%R 4/16
PTA +2.40T +2.29UDC +1.67FLC 99%R
GTPI +2388G

Farnear-TBR Bowsr Boyana-ET

69822164 Very Good-87 VG-MS
2-02 2x 305d 18950 5.6 1059 3.0 564

3rd thru 10th Dams

Klassic Mac Barb VG-85
2-05 2x 365d 30439 4.0 1206 3.5 1067
Regancrest Barbi-ET EX-90 DOM
6-09 2x 305d 28790 3.8 1085 2.7 798
Life: 1557d 102030 3.7 3752 3.2 3216
Regancrest-PR Barbie-ET EX-92 GMD DOM
2-06 2x 365d 31690 3.9 1237 3.3 1050
• HM All-American Jr 3-Yr-Old Cow 2004
Regancrest Juror Brina-ET EX-92 GMD
4-04 2x 365d 40640 3.6 1478 3.0 1217
• Res Grand Champion, IA State Fair 2000
• Res Grand Champion, IA State Show 2002
Regancrest Aerostar Bert-ET EX-90 GMD DOM
5-05 2x 365d 37790 3.6 1357 3.2 1215
Life: 4 Lact 109350 3.7 4030 3.3 3556
Regancrest Mark Chairman Bea
EX-91 2E GMD DOM
7-09 2x 365d 33630 3.8 1278 3.1 1052
Life: 2036d 140130 4.1 5711 3.3 4616
Regancrest Board Chairman Bea EX-90
5-09 2x 365d 26010 4.1 1059 3.4 884
Regancrest Apache Standout Bea VG-86
4-10 2x 320d 19070 4.0 766
Life: 2432d 131940 3.6 4744



FARNEAR-TBR-BH GOOGLE-ET VG-87-2YR
2ND DAM OF LOT 4



BLONDIN HALOGEN GOLD
DAM OF LOT 4

LOT 4

MS GOLD GLAMOR 23441

840 3133063634

Born: 18-March-2016

Holstein Plaza Contacts:

Steve Mower +1 240-520-5906
Jennifer Dingbaum +1 320-250-2412
Hendrik Albada +1 240-520-1566
Amanda Hauck +1 570-765-0536

USA	Milk	Fat	Prot	SCS	DPR	PL	FLC	UDC	PTAT	DCE	NM	GTPI
4/16	+1005	+85	+44	2.79	+1.6	+5.5	+1.80	+2.40	+3.03	4.9%	+756	+2672

IHG Glamor-ET

3010356563 *TV *TL *TY *TD
PTA +1656M +90F +62P 78%R 4/16
PTA +4.6PL 2.84SCS +1.0DPR
PTA +2.34T +1.30UDC +.72FLC 77%R
GTPI +2615G

Blondin Halogen Gold

109045936C Born: July 7, 2014
GTPI +2576 +428M +69F +30P +2.54T

Farnear-TBR-BH Cashcoin-ET

70354884 *TV *TL *TY *TD
PTA +835M +46F +30P 96R 4/16
PTA +1.69T +2.27UDC +.08FLC
GTPI +2343G

Farnear-TBR-BH Gorgeous-ET

71290950 Very Good-85-2YR
2-02 305d 23458 4.2 986 3.2 700

Cookiecutter Petron Halogen

3008710387 *TV *TL *TY *TD
PTA +227M +27F +13P 85%R 4/16
PTA +2.10T +2.55UDC +1.16FLC
GTPI +2488G

Farnear-TBR-BH Google-ET

71290874 Very Good-87-2YR 88-MS
2-07 3x 365d 31868 4.4 1389 3.2 1014

3rd thru 9th Dams

B-Enterprise Super Gigi-ET

VG-88 VG-MS DOM
4-02 2x 350d 41980 2.8 1187 2.8 1183

Brigeen Outside Gigi

EX-90 2E GMD DOM
5-08 2x 365d 60160 4.2 2522 2.9 1766
Life: 1578d 167080 4.0 6600 3.0 4949

Brigeen Aer Gwyneth

EX-93 2E GMD DOM
6-05 2x 365d 48150 3.3 1567 2.8 1371
Life: 2094d 219870 3.3 7288 2.9 6372

Brigeen Integrity Gwen VG-86 GMD

3-07 2x 365d 39520 3.8 1518 2.8 1102
Life: 1478d 122980 3.6 4368 2.9 3536

Roylane Leadman Glory

VG-89 GMD DOM
2-00 2x 365d 30880 3.6 1127 3.1 952

Western-Cascade Mark Bella

EX-91 GMD DOM
3-06 2x 365d 36360 3.7 1354 3.0 1041

Western-Cascade Bell Glory

EX-90 2E GMD DOM
7-10 2x 305d 34830 3.3 1155 3.0 1037
Life: 1525d 139210 3.6 5018 3.1 4295



SNOWBIZ SYMPATICO SOFIA-RED VG-85-2YR
DAM OF LOT 5



GEN-I-BEQ SNOWMAN SUMMER *RC VG-85-2YR
2ND DAM OF LOT 5

LOT 5

MS SOFIAS COMMANCHE SASS *RC

840 3134898089

Born: 22-March-2016

Holstein Plaza Contacts:

Steve Mower +1 240-520-5906
Jennifer Dingbaum +1 320-250-2412
Hendrik Albada +1 240-520-1566
Amanda Hauck +1 570-765-0536

USA	Milk	Fat	Prot	SCS	DPR	PL	FLC	UDC	PTAT	DCE	NM	GTPI
4/16	+1776	+94	+54	2.84	+0.4	+6.2	+1.76	+1.27	+1.83	5.2%	+811	+2603

Seagull-Bay Comanche-ET

312470312 *TV *TL *TY *TD
PTA +1510M +102F +45P 75%R 4/16
PTA +8.1PL 2.89SCS +1.6DPR 5.1%DCE
PTA +1.35T +.91UDC +1.58FLC 74%R 4/16
GTPI +2612G

Snowbiz Sympatico Sofia-Red-ET

CAN 108502624 *TY Very Good-85-2YR
GTPI+2520 +1654M +69F +53P +2.46T
• #1 GTPI Red Cow in the BREED
• Dam of Mr Salvatore *RC GTPI+2698
• Dam of #1 Red Carrier Heifer in the Breed
• 13th Generation VG or EX

Stantons Catalyst

107535541C *TV *TL *TY *TD
PTA +1049M +66F +30P 79%R 4/16
PTA +1.26T +1.62UDC +1.30FLC
GTPI +2422G

EDG Ruby Mogul Rose-ET

72127371 Born: December 19, 2012

Dymenthalm S Sympatico-ET

CAN 11004723 *RC *TV *TL *TY
PTA +1844M +83F +50P 98%R 4/16
PTA +1.77T +1.34UDC +1.11FLC
GTPI +2473G

Gen-I-Beq Snowman Summer-TW-ET

CAN 106807371 Very Good-85-2YR-CAN
2-01 2x 358d 30198 3.5 1051 3.1 934
Dam of:
223HO00017 Snowbiz Symion *RC one of
the highest Red Carrier bulls in the breed!

3rd thru 12th Dams

Gen-I-Beq Bolton Secretly *RC

VG-87-CAN 3*
2-01 2x 365d 30474 4.4 1327 3.4 1043

• 1 Superior Lactation

Gen-I-Beq Goldwyn Secret

VG-87-CAN 11*
5-05 2x 365d 30573 4.5 1389 3.4 1038

Gen-I-Beq Durham Sherry VG-87-CAN 8*

5-02 2x 365d 40036 3.9 1574 3.2 1268

Glen Drummond Splendor

VG-86-2YR-CAN 38*
4-10 2x 314d 26510 4.2 1124 3.2 840

Glen Drummond Aero Flower

VG-88-CAN 18*
2-03 2x 326d 25622 4.0 1032 3.4 882

Glen Drummond Shower EX-CAN 14*

4-10 2x 365d 28583 4.8 1380 3.6 1016

Glen Drummond S C Jo Beth

EX-2E-CAN 7*
Life (6 Lacs): 141637 4.2 5994 3.2 3593

• Grand Champion Brant-Wentworth 1984

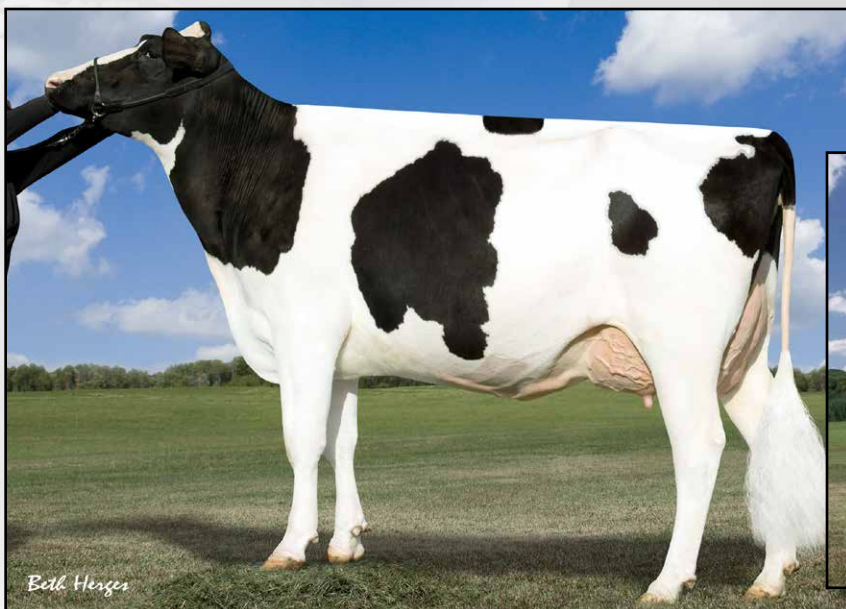
Glen Drummond Matt Beth VG-85 4*

11-10 2x 365d 25038 3.7 935
Life (5 Lacs): 105953 4.1 4295

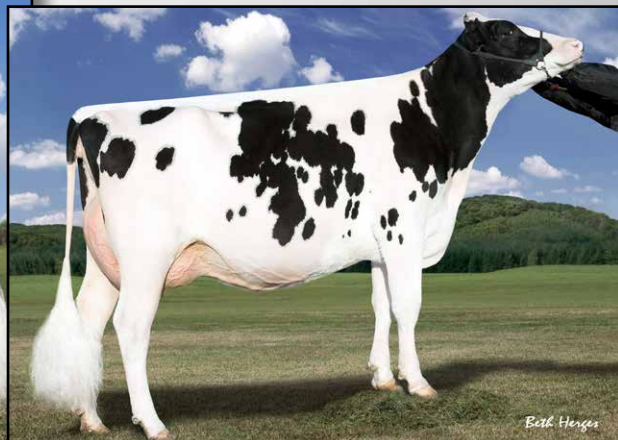
Glen Drummond Marquis Beth VG-CAN

Life (8 Lacs): 112688 4.2 4766

Ferglynn Rag Apple Bertha VG-CAN 3*



LARCREST CHENOA-ETS VG-87-2YR DOM
2ND DAM OF LOT 6



LARCREST CRIMSON EX-93 2E GMD DOM
3RD DAM OF LOT 6

LOT 6

CHOICE - CAPEHEART OR COLETTE

Holstein Plaza Contacts:

Steve Mower +1 240-520-5906
Jennifer Dingbaum +1 320-250-2412
Hendrik Albada +1 240-520-1566
Amanda Hauck +1 570-765-0536

JEMAR-LLC JEDI CAPEHEART-ET

840 3127066597 Born: 21-April-2016

USA	Milk	Fat	Prot	SCS	DPR	PL	FLC	UDC	PTAT	NM	GTPI
6/16	+1764	+78	+64	2.88	-0.9	+4.9	+2.20	+1.90	+2.63	+761	+2627

JEMAR-LLC JEDI COLETTE-ET

840 3127066596 Born: 24-April-2016

USA	Milk	Fat	Prot	SCS	DPR	PL	FLC	UDC	PTAT	NM	GTPI
6/16	+1449	+67	+57	2.78	+0.9	+5.3	+1.92	+2.26	+2.71	+741	+2651

S-S-I Montross Jedi-ET

3123886035 *TV *TL *TY *TD
PTA +2461M +83F +80P 76%R 4/16
PTA +898NM\$ +6.8PL 2.97SCS +1.1DPR
PTA +2.21T +1.45UDC +1.98FLC 75%R
GTPI +2781

Larcrest Collect-ET

73679994 Good Plus-83 @ 2-03
GTPI+2360 +982M +72F +51P +2.28T
2-01 2x 65d 5435 4.0 215 3.0 164 inc.
• Will be rescored in July and should go VG

Bacon-Hill Montross-ET

71703339 *TV *TL *TY *TD
PTA +2367M +81F +66P 79R 4/16
PTA +2.31T +1.68UDC +2.21FLC
GTPI +2545G

S-S-I Supersire Miri 8679-ET

3011538078 Very Good-88-3RY DOM

Genervations Liquid Gold-ET

11397834C *TV *TL
PTA +540M +63F +45P 91%R 4/16
PTA +1.69T +.95UDC +.67FLC
GTPI +2287G

Larcrest Chenoa-ETS

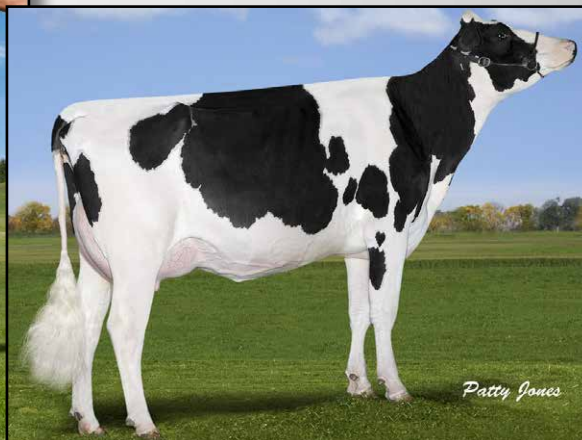
56264510 Very Good-87 DOM @ 3-00
2-04 2x 365d 35930 4.1 1487 3.5 1259
• Dam of Vekis Chevrolet & Fanatic
• Robust daughter sold for \$90,000
• Maternal sister to Larcrest Cale VG-89

3rd thru 8th Dams

Larcrest Crimson-ET
EX-93 2E GMD DOM
5-02 2x 365d 46390 5.3 2448 3.7 1708
Life: 2233d 195860 4.7 9125 3.8 7396
• Granddam of Commander, Chevrolet, Fanatic and many more!
Larcrest Cosmopolitan VG-87 GMD DOM
2-04 2x 365d 30930 4.1 1261 3.6 1119
Larcrest Oside Champagne-TW
EX-90 GMD DOM
2-03 2x 365d 29110 4.5 1322 3.7 1077
• 17 sons in A.I. worldwide
Larcrest Juror Chanel
EX-93 3E GMD DOM
9-00 2x 365d 48460 4.0 1943 3.4 1648
Life: 2899d 245420 4.3 10482 3.6 8866
Larcrest Lindy Chandra VG-85
2-05 2x 365d 20896 4.8 993 3.8 803
Larcrest Inspiration Carly VG-87
3-05 2x 305d 21800 4.5 973 3.3 802



SNOWBIZ SYMPATICO SHYLA *RC
DAM OF LOT 7



GEN-I-BEQ SNOWMAN SPRING *RC VG-85-2YR
2ND DAM OF LOT 7

LOT 7

DG STRATIFY SHELBY-ET

840 3128162337

Born: 23-February-2016

Holstein Plaza Contacts:

Steve Mower +1 240-520-5906
Jennifer Dingbaum +1 320-250-2412
Hendrik Albada +1 240-520-1566
Amanda Hauck +1 570-765-0536

USA	Milk	Fat	Prot	SCS	DPR	PL	FLC	UDC	PTAT	DCE	NM	GTPI
4/16	+1306	+79	+44	2.82	+1.9	+5.8	+2.06	+1.94	+2.07	4.3%	+740	+2615

Bush-Bros altaStratify-ET

3011611135 *TV *TL *TY *TD
PTA +1874M +76F +68P 78%R 4/16
PTA +6.2PL 2.90SCS +1.6DPR 4.5%DCE
PTA +1.06T +.70UDC +.62FLC 76%R 4/16
GTPI +2585G

Snowbiz Sympatico Shyla-ET *RC

CAN 108502579 Born: May 16, 2013
GTPI+2400 +1369M +72F +35P +1.96T
• Dam of #3, #4 & #5 *RC heifers in Europe!
Due June 2016

Seagull-Bay Supersire-ET

69981349 *TV *TL *TY *TD
PTA +2464M +116F +75P 99R 4/16
PTA +1.42T +.64UDC +.44FLC
GTPI +2697G

Bush-Bros Freddie 4169

70396684 Very Good-85-2YR
2-00 2x 305d 19540 4.7 927 3.6 712

Dymenthalm S Sympatico-ET

CAN 11004723 *RC *TV *TL *TY
PTA +1844M +83F +50P 98%R 4/16
PTA +1.77T +1.34UDC +1.11FLC
GTPI +2473G

Gen-I-Beq Snowman Spring-ET *RC *BY

CAN 106807371 Very Good-85-2YR-CAN
2-01 2x 365d 28735 3.3 952 3.1 906
Dam of:
200HO10143 Snowbiz Stonewall-Red

3rd thru 12th Dams

Gen-I-Beq Bolton Secretly *RC
VG-87-CAN 3*
2-01 2x 365d 30474 4.4 1327 3.4 1043
• 1 Superior Lactation
Gen-I-Beq Goldwyn Secret
VG-87-CAN 11*
5-05 2x 365d 30573 4.5 1389 3.4 1038
Gen-I-Beq Durham Sherry VG-87-CAN 8*
5-02 2x 365d 40036 3.9 1574 3.2 1268
Glen Drummond Splendor
VG-86-2YR-CAN 38*
4-10 2x 314d 26510 4.2 1124 3.2 840
Glen Drummond Aero Flower
VG-88-CAN 18*
2-03 2x 326d 25622 4.0 1032 3.4 882
Glen Drummond Shower EX-CAN 14*
4-10 2x 365d 28583 4.8 1380 3.6 1016
Glen Drummond S C Jo Beth
EX-2E-CAN 7*
Life (6 Lacs): 141637 4.2 5994 3.2 3593
• Grand Champion Brant-Wentworth 1984
Glen Drummond Matt Beth VG-85 4*
11-10 2x 365d 25038 3.7 935
Life (5 Lacs): 105953 4.1 4295
Glen Drummond Marquis Beth VG-CAN
Life (8 Lacs): 112688 4.2 4766
Ferglynn Rag Apple Bertha VG-CAN 3*

Balanced numbers from huge A.I. Family!



FARNEAR-TBR-BH GOOGLE-ET VG-87-2YR
2ND DAM OF LOT 8



BLONDIN HALOGEN GOLD
DAM OF LOT 8

LOT 8

840003134897763

840 3134897763

Born: 27-February-2016

Holstein Plaza Contacts:

Steve Mower +1 240-520-5906
Jennifer Dingbaum +1 320-250-2412
Hendrik Albada +1 240-520-1566
Amanda Hauck +1 570-765-0536

USA	Milk	Fat	Prot	SCS	DPR	PL	FLC	UDC	PTAT	DCE	NM	GTPI
4/16	+1400	+67	+42	2.79	+2.1	+6.8	+1.29	+2.70	+2.66	3.7%	+762	+2651

Pen-Col Marty-ET

72754131 *TV *TL *TY *TD
PTA +1866M +90F +66P 78%R 4/16
PTA +3.3PL 2.89SCS +0.1DPR
PTA +2.14T +1.44UDC +.83FLC 78%R
GTPI +2601G

Blondin Halogen Gold

109045936C Born: July 7, 2014
GTPI+2576 +428M +69F +30P +2.54T

Seagull-Bay Supersire-ET

69981349 *TV *TL *TY *TD
PTA +2464M +116F +75P 99R 4/16
PTA +1.42T +.64UDC +.44FLC
GTPI +2697G

Pen-Col Bookem Misty-ET

70609512 Very Good-88-3YR

Cookiecutter Petron Halogen

3008710387 *TV *TL *TY *TD
PTA +227M +27F +13P 85%R 4/16
PTA +2.10T +2.55UDC +1.16FLC
GTPI +2488G

Farnear-TBR-BH Google-ET

71290874 Very Good-87-2YR 88-MS
2-07 3x 365d 31868 4.4 1389 3.2 1014

3rd thru 9th Dams

B-Enterprise Super Gigi-ET

VG-88 VG-MS DOM
4-02 2x 350d 41980 2.8 1187 2.8 1183

Brigeen Outside Gigi

EX-90 2E GMD DOM
5-08 2x 365d 60160 4.2 2522 2.9 1766
Life: 1578d 167080 4.0 6600 3.0 4949

Brigeen Aer Gwyneth

EX-93 2E GMD DOM
6-05 2x 365d 48150 3.3 1567 2.8 1371
Life: 2094d 219870 3.3 7288 2.9 6372

Brigeen Integrity Gwen VG-86 GMD

3-07 2x 365d 39520 3.8 1518 2.8 1102
Life: 1478d 122980 3.6 4368 2.9 3536

Roylane Leadman Glory

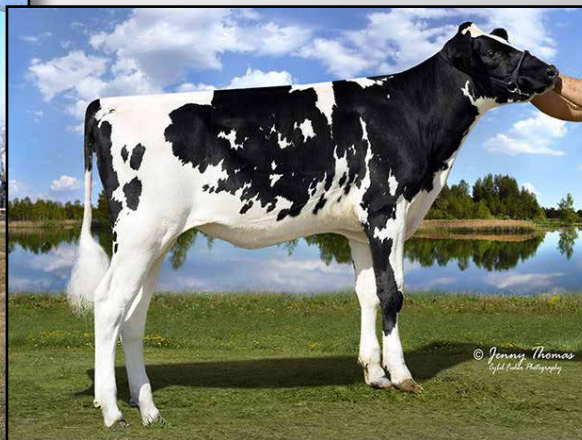
VG-89 GMD DOM
2-00 2x 365d 30880 3.6 1127 3.1 952

Western-Cascade Mark Bella

EX-91 GMD DOM
3-06 2x 365d 36360 3.7 1354 3.0 1041

Western-Cascade Bell Glory

EX-90 2E GMD DOM
7-10 2x 305d 34830 3.3 1155 3.0 1037
Life: 1525d 139210 3.6 5018 3.1 4295



MORNINGVIEW SHTLT MADILYN EX-94 2E GMD DOM
4TH DAM OF LOT 9

IHG FLAME ELSA 9173
DAM OF LOT 9

LOT 9

STUNNING-M MODEL CAMINO

840 3136823062

Born: 3-April-2016

Holstein Plaza Contacts:

Steve Mower +1 240-520-5906
Jennifer Dingbaum +1 320-250-2412
Hendrik Albada +1 240-520-1566
Amanda Hauck +1 570-765-0536

USA	Milk	Fat	Prot	SCS	DPR	PL	FLC	UDC	PTAT	DCE	NM	GTPI
4/16	+1818	+83	+53	2.86	+1.5	+7.7	+1.65	+1.40	+1.54	6.7%	+824	+2612

Bacon-Hill Modesty-ET

3013654627 *TV *TL *TY *TD
PTA +1860M +98F +63P 75%R 4/16
PTA +8.6PL 3.03SCS +2.0DPR 3.1%DCE
PTA +2.40T +2.36UDC +2.04FLC 75%R 4/16
GTPI +2850G

IHG Flame Elsa 9173-ET

3125944695 Born: October 7, 2014
GTPI+2539 +1177M +71F +43P +1.77T

Siemers Mogul Pety

3010660326 *TV *TL *TY *TD
PTA +1146M +58F +44P 79R 4/16
PTA +2.60T +2.81UDC +2.03FLC
GTPI +2519G

Bacon-Hil Suprs Modesty-ET

3010945893 Very Good-85-2YR DOM

Vieuxsaule Flame-ET

71699265 *TV *TL *TY
PTA -312M +74F +18P 99%R 4/16
PTA +2.26T +1.81UDC +1.89FLC
GTPI +2467G

Farnear Ellie Elsa-ET

71291003 Born: March 9, 2013
• Sold for \$64,000 in the Farnear Sale 2013
• Same family as Kingboy, Emmett, Epic,
Eight and many more bulls!

3rd thru 14th Dams

Morningview Super Ellie-ET EX-90 DOM

Morningview Shtle Madilyn
EX-94 2E GMD DOM
6-10 2x 365d 46580 3.8 1756 3.1 1442
Life: 1281d 132040 4.1 5359 3.2 4258

Morningview Chmpn Martha-ET

EX-92 2E GMD
Life: 1521d 134520 3.9 5225 3.2 4270

Crockett-Acres Drhm Mae-ET

VG-87 GMD DOM
2-04 3x 365d 29760 4.3 1294 3.4 1026

Wauregan Maebell-ET

EX-91 2E GMD DOM
2-06 3x 365d 36440 4.1 1493 3.6 1306

Whittier-Farms Lead Mae-ET

EX-95 3E GMD
Life: 1613d 126960 4.3 5473 3.6 4597

Raymau Bstar Monica-ET VG-89 DOM

2-01 2x 146d 12280 3.8 471 3.3 405
Juniper Jason Maria VG-87 EX-MS DOM

2-03 2x 365d 20260 4.3 868 3.6 736

JDM-Pride Valiant Maggie

EX-91 GMD DOM
6-00 2x 365d 35540 4.1 1441 3.3 1186

La-Ko-Land Penstate Sadie

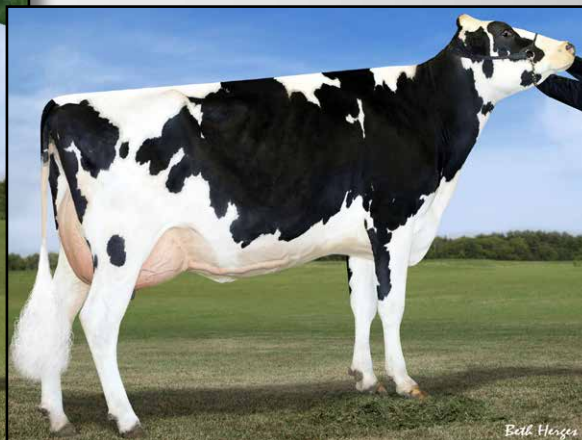
VG-87 GMD DOM
Life: 2480d 166909 3.5 5732 3.2 2854

La-Ko-Land Bootmaker Sally VG-86

5-10 2x 365d 24450 4.1 1010

La-Ko-Land Monitor Nancy EX-90

Life: 2381d 145490 3.0 4442



**FARNEAR-TBR-BH GEORGIA VG-87-2YR
LOT 10**

**B-ENTERPRISE SUPER GIGI-ET VG-88 DOM
DAM OF LOT 10**

LOT 10

FARNEAR-TBR-BH GEORGIA-ET

Holstein Plaza Contacts:

Steve Mower +1 240-520-5906
Jennifer Dingbaum +1 320-250-2412
Hendrik Albada +1 240-520-1566
Amanda Hauck +1 570-765-0536

USA 71290949 Very Good-87-2YR VG-MS Born: 4-November-2012
2-02 2x 305d 28000 4.3 1200 3.2 904 DONOR DAM
Bred: March 15, 2016 to 7HO12721 Holyland Elite Exactly (*ultrasounded female*)

USA	Milk	Fat	Prot	SCS	DPR	PL	FLC	UDC	PTAT	DCE	NM	GTPI
4/16	+1066	+41	+39	2.83	+2.7	+4.4	+2.46	+2.37	+2.92	4.4%	+552	+2503

Averages 5 transfers IVF and 7.5 transfers conventional flushing

De-Su Bkm McCutchen-ET

69990138 *TV *TL *TY *TD
PTA +840M +54F +33P 99%R 4/16
PTA +3.0PL 2.84SCS -.4DPR 3.2%DCE
PTA +3.19T +2.88UDC +2.59FLC 99%R
GTPI +2455G

B-Enterprise Super Gigi-ET

69386235 Very Good-88 VG-MS DOM
2-03 2x 365d 38600 3.3 1287 3.0 1146
4-02 2x 350d 41980 2.8 1187 2.8 1183
• Several sons in A.I.

De-Su 521 Bookem-ET

66636657 *TR *TV *TL *TY *TD
PTA +1252M +29F +48P 99R 4/16
PTA +1.60T +1.10UDC +1.15FLC
GTPI +2326G

Sully Shottle May-TW

138218285 Excellent-90 DOM
6-07 3x 365d 39960 3.9 1555 3.3 1302

Charlesdale Superstition-ET

62065919 *TR *TV *TL *TY *TD
PTA +1110M -11F +29P 99%R 4/16
PTA +.87T +1.07UDC +.18FLC
GTPI +2100G

Brigeen Outside Gigi

131353482 Excellent-90 2E GMD DOM
5-08 2x 365d 60160 4.2 2522 2.9 1766
Life: 1578d 167080 4.0 6600 3.0 4949

3rd thru 7th Dams

Brigeen Aer Gwyneth

EX-93 2E GMD DOM
6-05 2x 365d 48150 3.3 1567 2.8 1371
Life: 2094d 219870 3.3 7288 2.9 6372

Brigeen Integrity Gwen VG-86 GMD

3-07 2x 365d 39520 3.8 1518 2.8 1102
Life: 1478d 122980 3.6 4368 2.9 3536

Roystone Leadman Glory

VG-89 GMD DOM
2-00 2x 365d 30880 3.6 1127 3.1 952

Western-Cascade Mark Bella

EX-91 GMD DOM
3-06 2x 365d 36360 3.7 1354 3.0 1041

Western-Cascade Bell Glory

EX-90 2E GMD DOM
7-10 2x 305d 34830 3.3 1155 3.0 1037
Life: 1525d 139210 3.6 5018 3.1 4295



BUDJON-JK GLDCHIP ENAMEL-ET VG-89 EX-MS @ 2-09
DAM OF LOT 11



BUDJON-JK EMILYS EDAIR EX-95 2E
2ND DAM OF LOT 11

LOT 11

STUNNING BRADY EXCEPTION

840 313435680

Born: 5-September-2015

Holstein Plaza Contacts:

Steve Mower +1 240-520-5906
Jennifer Dingbaum +1 320-250-2412
Hendrik Albada +1 240-520-1566
Amanda Hauck +1 570-765-0536

Butz-Butler Atwood Brady-ET

140610404 *TV *TL *TY *TD
PTA -155M -19F -23P 95%R 4/16
PTA -1.4PL 2.83SCS -3.2DPR
PTA +3.28T +3.16UDC +2.52FLC 95%R
GTPI +1650G

Budjon-JK Gldchip Enamel-ET

3013251049 Very Good-89 EVEVE @ 2-09
2-03 2x 189d 12065 4.4 532 3.2 384 inc.
• MAX SCORED two-year-old
• 1st Jr 2-Year-Old, GA State Fair 2015

Maple-Downs-I G W Atwood-ET

CAN 8956379 *TR *TV *TL *TY *TD
PTA -73M +29F +2P 99%R 4/16
PTA +3.64T +2.59UDC +2.83FLC 99%R
GTPI +1917G

Regancrest Brasilia-ET

62496866 Excellent-92 2E DOM
2-03 3x 365d 33180 3.6 1186 3.0 989

Mr Chassity Gold Chip-ET

140145553 *TR *TV *TL *TY *TD
PTA -313M +0F -24P 99%R 4/16
PTA +2.16T +1.86UDC +1.66FLC 99%R
GTPI +1586G

Budjon-JK Emilys Edair-ET

138418546 Excellent-95 EEEEE 2E
4-03 2x 365d 38420 3.2 1241 3.3 1264
Life: 1591d 148190 3.4 5020 3.3 4850
• Res All-American Jr. 3-Year-Old 2010
• 2nd Jr 3-Yr-Old, Int'l Holstein Show 2010
• 4th 4-Year-Old, Int'l Holstein Show 2011

3rd thru 9th Dams

Budjon-JK Storm Emily-ET

EX-92 EEEEE 2E DOM
4-08 2x 365d 41090 3.7 1514 3.2 1329
• Reserve All-American Sr 2-Yr-Old 2005
• Int Champ, Midwest Spring Nat'l 2005

Budjon-JK Linjet Eileen-ET

EX-96 4E GMD DOM
5-06 2x 365d 44703 3.7 1647 3.3 1467
Life: 1881d 175330 3.6 6327 3.4 5956
• Reserve All-American Aged Cow 2005
• All-American 5-Year-Old Cow 2004
• Res Sr Champion International Show 2004
• HM All-Canadian Sr 3 Year Old Cow 2002
• Nom All-American Sr 2 Year Old Cow 2001

Krull Broker Elegance

EX-96 3E GMD DOM
5-07 2x 365d 40950 3.7 1522 3.1 1272
Life: 2356d 183710 3.7 6878 3.2 5919
• HM All-American Aged Cow 1999
• HM All-Canadian Mature Cow 1999
• 1st International 125,000 lb Cow 2000
• 2nd Mid-W Spr Nat 4Y Cow 1997

Krull Starbuck Excellency

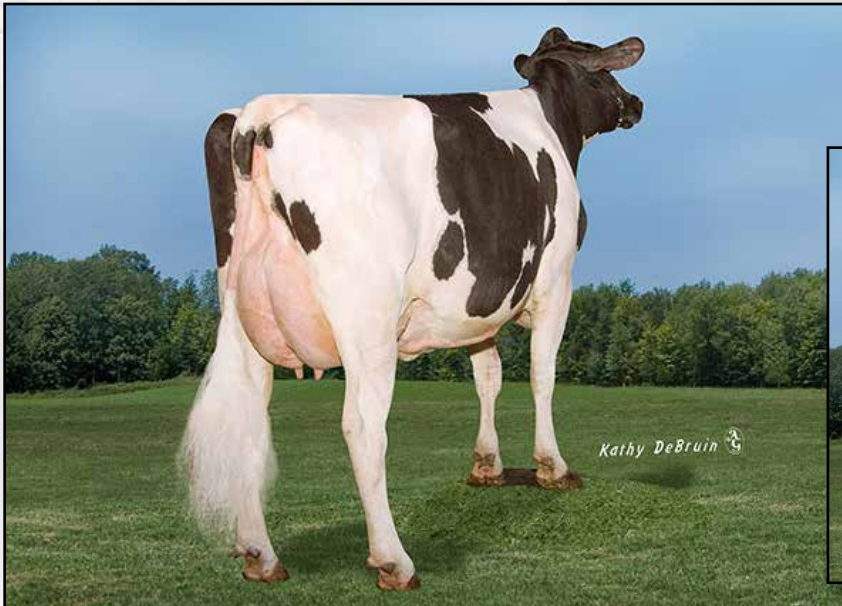
EX-90 GMD DOM
3-03 2x 365d 27140 3.5 937 3.4 930
Krull TT Excellency EX-90 VEEE DOM
3-02 2x 363d 24319 3.5 862 3.4 829
Life: 1733d 109780 3.7 4077 3.3 3605

Krull Boot Mark Excellency EX-92 2E GMD

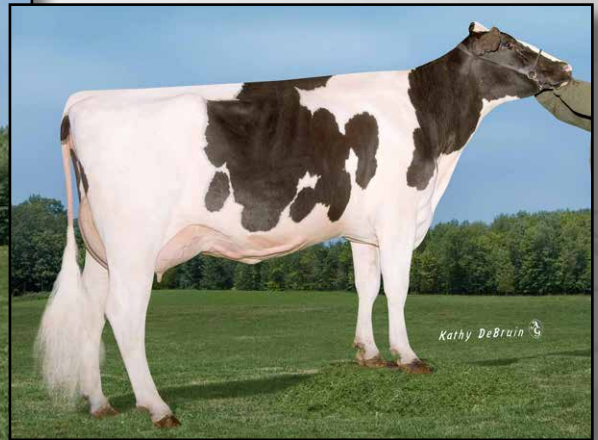
6-06 2x 365d 27410 3.8 1040 3.1 868
Life: 3026d 201440 3.5 7105 3.0 4634

Krull Kingstead Excellency EX-92 4E GMD

12-4 2x 323d 21920 3.5 772
Life: 3364d 179790 3.6 6436



RICHMOND-FD POMPEY-ET EX-91 DOM
DAM OF LOT 12



RICHMOND-FD POMPEY-ET EX-91 DOM
DAM OF LOT 12

LOT 12

PINE-TREE 2228 GALA 5813-ET

Holstein Plaza Contacts:

Steve Mower +1 240-520-5906
Jennifer Dingbaum +1 320-250-2412
Hendrik Albada +1 240-520-1566
Amanda Hauck +1 570-765-0536

USA 71859391 Very Good-85-2YR VG-MS

2-00 294d 24757 4.1 1018 3.2 796 inc.

Due: August 22, 2016 to 1HO11373 Weigeline S-Sire Sangria-ET

Born: 4-July-2013

DONOR DAM

USA	Milk	Fat	Prot	SCS	DPR	PL	FLC	UDC	PTAT	DCE	NM	GTPI
4/16	+846	+61	+33	2.64	+1.6	+5.5	+1.75	+2.09	+2.17	5.8%	+648	+2498

De-Su Freddie Galaxy-ET

69990052 *TV *TL *TY *TD
PTA +744M +46F +33P 99%R 4/16
PTA +3.6PL 2.69SCS -.4DPR 5.0%DCE
PTA +1.80T +1.61UDC +1.01FLC 99%R
GTPI +2281G

Richmond-FD Pompey-ET

66800627 Excellent-91 VVEEE DOM
GTPI+2356 +785M +52F +35P +1.33T
2-06 3x 305d 26890 3.9 1044 4.0 1068
3-10 3x 305d 30050 4.3 1282 3.3 995

Badger-Bluff Fanny Freddie

60996956 *TV *TL *TY *TD
PTA +837M +30F +27P 99R 4/16
PTA +.44T +.59UDC +1.57FLC
GTPI +2224G

De-Su 8947-ET

64701370 Very Good-87 GMD DOM
4-10 3x 365d 46280 4.0 1845 3.1 1438

Co-Op Bosside Massey-ET

63026939 *TV *TL *TY *TD
PTA +698M +44F +40P 99%R 4/16
PTA +.81T +1.32UDC +.97FLC
GTPI +2279G

Richmond-FD Ramos Poppy

62371956 Excellent-91 2E DOM *BY
3-04 3x 365d 36110 4.1 1489 3.3 1194
4-08 3x 365d 33580 4.1 1362 3.4 1136
2-01 3x 365d 32360 4.1 1313 3.4 1090
6-05 3x 303d 30400 3.8 1170 3.2 967
Life: 1605d 143380 4.0 5795 3.3 4782

Daughters of Pompey

Butlerview Colt Prarie VG-86

dam of:

Coyne-Farms Sympati Pat-Red

GTPI+2479 at Select Sires

Butlerview Colt Pixie-ET *RC *PC

VG-87

dam of:

Butlerview Pixie SS57453-ET *RC -PC

GTPI+2521 +992M +40F +35P +1.45T

• Several sons in A.I. including Powerball sons at Masterrind and IPS

3rd Dam

Richmond-FD Poppins VG-85

3-08 3x 365d 42190 3.3 1406 3.1 1287

Life: 1939d 183200 3.4 6157 3.0 5556



SAVAGE-LEIGH GOLD LONA EX-92-3YR
DAM OF 13

SAVAGE-LEIGH LEONA EX-96 EEEEE
SISTER TO DAM OF LOT 13

LOT 13

SAVAGE-LEIGH SID LOLA

840 3123797035

Born: 2-March-2016

Holstein Plaza Contacts:

Steve Mower +1 240-520-5906
Jennifer Dingbaum +1 320-250-2412
Hendrik Albada +1 240-520-1566
Amanda Hauck +1 570-765-0536

Pine-Tree Sid

62175895 *TY
PTA -494M +4F -8P 99%R 4/16
PTA -74NM\$ -2.1PL 2.89SCS
PTA +2.20T +2.00UDC +0.07FLC
GTPI +1597G

Savage-Leigh Gold Lona-ET

3004778739 Excellent-92-3YR EEEVEE
3-06 2x 365d 34290 3.8 1304 3.1 1065
5-03 2x 365d 38710 4.0 1540 3.3 1263
• Res Senior Champ, Eastern Fall Nat'l 2013
• Int Champion, Eastern Fall Nat'l 2012
• 1st Sr 2-Year-Old, Eastern Fall Nat'l 2011

Maternal sister to Gold Lona

Savage-Leigh Leona-ET EX-96 2E GMD
5-05 2x 365d 42050 4.3 1796 3.2 1343
• Nom All-American 125,000 lb Cow 2015
• Nom All-American 125,000 lb Cow 2014
• Nom All-American 125,000 lb Cow 2013
• Res All-American 125,000 lb Cow 2012
• Res Senior Champ, Eastern Fall Nat'l 2011
• Nom All-American & All-Canadian 2010
• HHM All-American Jr 2-Yr Old 2007

Regancrest-Mr Drham Sam-ET

207184639 *TR *TV *TL
PTA -469M +3F -10P 99%R 4/16
PTA +.48T +.32UDC +.89FLC
GTPI +1480G

Pine-Tree Finley Minnie-ET

61733050 EX-90 DOM
4-09 2x 305d 26120 3.5 911 3.0 786

Braedale Goldwyn

CAN 10705608 *TV *TL *TY
PTA -380M +13F +1P 99%R 4/16
PTA +1.79T +1.49UDC +1.51FLC
GTPI +1872G

Savage-Leigh Licorice-ET

60317090 Excellent-92 GMD DOM
4-02 2x 365d 51220 4.3 2179 3.3 1693
Life: 1018d 113740 4.4 4968 3.4 3858
• Nominated All-American 2006
• HHM All-American 5-Yr Old Cow 2006
• Nom All-American Produce 2011 & 2012

Maternal sisters to Lot 14

Savage-Leigh Alex Lacey VG-87-2YR

- Junior All-American Winter Yearling 2014
- All-American Winter Yearling 2014
- 1st Winter Yearling, International Holstein 2014
- Savage-Leigh Drman Lucky-ET
- Jr Champ, NY Spring Jr Holstein Show 2016
- 1st Fall Calf, NY Spring International 2016

3rd thru 8th Dams

Savage-Leigh Bellwood Linda

EX-92 2E GMD DOM
2-10 2x 365d 40240 5.8 2349 3.4 1358
Life: 1312d 126760 5.2 6576 3.2 4076
• Nom All-American Jr. 3-Year-Old 1999
• Nom Global Cow of the Year 2005

Savage-Leigh Star Linda-ET VG-87 GMD

2-02 2x 365d 30890 4.0 1236 3.1 952

Savage-Leigh Glenview Linda

EX-90 EVVE GMD DOM
6-08 2x 365d 41820 4.6 1936 3.0 1247
Life: 1892d 150300 4.4 6636 3.2 4813

Savage-Leigh Lindas Chairman GP-84

5-10 2x 365d 30620 3.8 1167 3.3 1013
Life: 1972d 121550 3.9 4718 3.3 4013

Savage-Leigh Creek Lydia VG-88

4-11 2x 344d 16390 4.2 685 3.1 511

Savage-Leigh Kate Linda VG-85

6-01 2x 305d 19940 4.0 793



BGP L GOLD HAYWORTH-ET
DAM OF LOT 14



RI-VAL-RE SOCRT ALAINDRA VG-85
3RD DAM OF LOT 14

LOT 14

STUNNING-M MODEST HAYDAY-ET

840 3133423146

Born: 24-April-2016

Holstein Plaza Contacts:

Steve Mower +1 240-520-5906
Jennifer Dingbaum +1 320-250-2412
Hendrik Albada +1 240-520-1566
Amanda Hauck +1 570-765-0536

USA	Milk	Fat	Prot	SCS	DPR	PL	FLC	UDC	PTAT	DCE	NM	GTPI
6/16	+1429	+85	+58	2.90	+2.0	+5.9	+1.04	+1.17	+1.54	3.5%	+811	+2620

Bacon-Hill Modesty-ET

3013654627 *TV *TL *TY *TD
PTA +1860M +98F +63P 75%R 4/16
PTA +8.6PL 3.03SCS +2.0DPR 3.1%DCE
PTA +2.40T +2.36UDC +2.04FLC 75%R 4/16
GTPI +2850G

BGP L Gold Hayworth-ET

30139239030 Born: November 3, 2013
GTPI+2420 +825M +54F +42P +2.11T
• Due October 2016, looks very promising

Siemers Mogul Pety

3010660326 *TV *TL *TY *TD
PTA +1146M +58F +44P 79R 4/16
PTA +2.60T +2.81UDC +2.03FLC
GTPI +2519G

Bacon-Hil Suprs Modesty-ET

3010945893 Very Good-85-2YR DOM

Genervations Liquid Gold-ET

11397834C *TV *TL
PTA +540M +63F +45P 91%R 4/16
PTA +1.69T +.95UDC +.67FLC
GTPI +2287G

Ri-Val-Re Bookem Hero-ET

69928550 Very Good-86 VG-MS DOM
2-07 2x 317d 30430 3.9 1201 3.4 1032
• Sold for \$90,000

3rd thru 9th Dams

Ri-Val-Re Socrt Alaindra-ET VG-85
2-00 2x 365d 27220 3.2 878 3.2 864
Ri-Val-Re Shottle Ali-ET VG-88 DOM
3-03 2x 365d 34890 3.6 1251 3.3 1140
Ri-Val-Re Jesther Nina-ET
VG-88 GMD DOM
6-03 2x 365d 41990 3.6 1506 3.4 1407
Life: 1658d 131260 3.5 4601 3.5 4557
Peckenstein Terry Nike-ET
VG-85 GMD DOM 1*
2-01 2x 365d 34580 3.8 1319 3.3 1144
Peckenstein Elton Nikki-ET EX-90 DOM
4-10 2x 365d 37500 4.2 1566 3.3 1227
Peckenstein Bstar Scarlet
VG-86 GMD DOM
2-01 2x 365d 33710 3.8 1280 3.1 1052
Ramadaly Melvin-209 Kay
EX-90 GMD DOM
4-06 2x 365d 42090 4.5 1898 3.0 1278
Life: 1980d 165230 4.1 6771 3.2 5292



KINGSMILL ROY ROULETTE-ET EX-92 EEEEE 2E
DAM LOT 15

LOT 15

TRAMILDA-J ARCHRV RIBBON-ET

USA 73947810

Born: 28-December-2015

Holstein Plaza Contacts:

Steve Mower +1 240-520-5906
Jennifer Dingbaum +1 320-250-2412
Hendrik Albada +1 240-520-1566
Amanda Hauck +1 570-765-0536

Eclipse Atwoods Archrival-ET

AUS 1786521
PTA -22M +24F -1P 78%R 4/16
PTA +.7PL 2.87SCS -2.5DPR
PTA +3.70T +2.74UDC +2.65FLC 77%R
GTPI +1969G

Kingsmill Roy Roulette-ET

63016084 Excellent-92 2E EEEEE
2-04 2x 305d 16530 3.7 616 3.1 511
4-03 2x 305d 22220 3.8 851 3.2 710
6-04 2x 365d 28020 4.0 1121 2.9 819

Maple-Downs-I G W Atwood-ET

CAN 8956379 *TR *TV *TL *TY *TD
PTA -73M +29F +2P 99%R 4/16
PTA +3.64T +2.59UDC +2.83FLC 99%R
GTPI +1917G

Any-ET

DE 1402793646 Very Good-87-2YR-NL

Roystone Jordan-ET

17064727 *TV *TL
PTA -663M -24F -24P 99%R 4/16
PTA +1.08T +1.00UDC -.35FLC 99%R
GTPI +1373G

Astrahoe LJ Rosa Rebel-ET

130430762 Excellent-92 2E
3-02 3x 305d 32120 3.9 1250 3.1 1007
7-05 2x 365d 48580 4.2 2021 3.0 1468
Life: 1186d 110960 3.9 4326 3.2 3529

3rd thru 14th Dams

Pinehurst Royal Rosa-ET EX-91 2E
3-10 3x 365d 41395 3.3 1358 2.8 1145
Life: 1212d 115400 3.5 4073 3.1 3593
Pinehurst Roulade EX-92 EEEEE 2E
5-00 3x 365d 35130 3.6 1271 3.2 1115
Life: 1761d 142070 3.8 5395 3.3 4705
Pinehurst Sweet Cleo EX-90 EEVEV
6-00 3x 365d 40380 4.4 1776 3.2 1305
Pinehurst Sweet Freedom EX-90 VEVE
5-07 3x 330d 34520 4.3 1500 3.1 1084
Pinehurst Sweet Delite EX-91 3E GMD
8-10 3x 365d 28460 4.2 1194 3.2 917
Life: 2228d 151600 4.0 6116 3.2 4907
Pinehurst Rapture EX-96 4E GMD
8-02 3x 365d 30370 4.2 1290 3.1 948
Life: 2297d 160790 3.9 6337 3.0 2469
Pinehurst Fragrance EX-90 2E
4-8 3x 365d 34490 3.6 1234
Hayssen Fond Ariel EX-90 2E
8-06 2x 328d 23330 3.2 753
Hayssen D V Audrey EX-90 2E
9-03 2x 365d 23670 4.4 1035
Whirlhill Q Rag Apple Ariel EX-92
6-02 2x 365d 26755 4.2 1134
Arlite Posch EX-92 GMD
5-03 2x 365d 21193 3.7 779
Audrey Posch EX-93 GMD
14-2 2x 365d 25572 3.7 948



MORNINGVIEW SILVER DOVE
SELLS AS LOT 16



MORNINGVIEW BAXTER D-RAE EX-92
2ND DAM LOT 16

LOT 16

MORNINGVIEW SILVER DOVE-ET

Holstein Plaza Contacts:

Steve Mower +1 240-520-5906
Jennifer Dingbaum +1 320-250-2412
Hendrik Albada +1 240-520-1566
Amanda Hauck +1 570-765-0536

USA 3130641759 Born: 20-May-2015 DONOR DAM
Averages 20 oocytes and 9.5 embryos per IVF aspiration

USA	Milk	Fat	Prot	SCS	DPR	PL	FLC	UDC	PTAT	DCE	NM	GTPI
4/16	+1298	+85	+52	2.85	+0.4	+5.1	+0.98	+1.32	+1.80	5.7%	+729	+2526

Seagull-Bay Silver-ET

72156794 *TV *TL *TY *TD
+1705M +105F +592P 78%R 4/16
PTA +4.4PL 2.85SCS -1.2DPR
PTA +2.44T +1.94UDC +2.45FLC 78%R
GTPI +2629G

Morningview Uno Danika

71505069 Very Good-85-2YR
GTPI+2373 +202M +67F +26P +2.31T
2-05 2x 365d 31370 4.5 1422 3.3 1044
• Dam of UPRIGHT at Semex

Mountfield SSI Dcy Mogul-ET

3006972816 *TR *TV *TL *TY *TD
PTA +1348M +90F +42P 99%R 4/16
PTA +2.51T +2.56UDC +2.64FLC
GTPI +2523G

Seagull-Bay Snow Darling

70640273 Very Good-86 DOM
2-02 2x 365d 35620 3.5 1257 3.0 1077

Amighetti Numero Uno

ITA 17990915143 *TV *TL *TY *TD
PTA -446M +60F +2P 99R 4/16
PTA +2.40T +2.29UDC +1.67FLC
GTPI +2388G

Morningview Baxter D-Rae

65274444 Excellent-92 DOM
4-03 2x 365d 43310 4.1 1769 3.2 1372

3rd thru 11th Dams

Early-Autumn Golden Rae-ET

EX-93 GMD DOM
4-01 2x 365d 42789 4.7 2026 3.3 1413
Scientific Beauty Rae *RC EX-90
4-03 365d 33089 4.7 1554 3.7 1224
Scientific Jubilant Rae-ET *RC EX-90 DOM
5-11 3x 365d 38,880 4.1 1608 3.4 1 329
C Hanoverhill Tony Rae
EX-96 3E GMD DOM
6-11 2x 365d 40220 4.1 1661 3.3 1331
Life: 2247d 166396 4.1 6904 3.4 5612
• Grand Champion Western National 1993
Hanoverhill TT Roxette-ET EX-94 2E GMD
10-0 3x 365d 35040 4.3 1519 3.0 1063
Life: 2104d 164789 4.1 6760 3.1 3587
Mil-R-Mor Roxette EX-CAN 30*
7-01 2x 365d 24531 4.7 1153
Life (6 Lacs): 121418 4.7 5728
C Glenridge Citation Roxy EX-97 4E GMD
10-1 2x 365d 25280 4.2 1060
Life: 3620d 209784 4.5 9471
• Queen of the Breed I and II
C Norton Court Model Vee EX-90
6-06 2x 365d 22483 3.9 875
Life: 4183d 218629 3.9 8581
• All-American Produce of Dam 1977, '78, '79
Norton Court Reflection Vale VG-85-CAN 5*
8-11 2x 332d 20631 3.7 765
Life (14 Lacs): 249583 3.7 9295



T-GEN-AC DENZEL JANARDY VG-86 VG-MS @ 3-00
DAM OF LOT 17



BENNER FORK JANARDAN VG-87-2YR
2ND DAM OF LOT 17

LOT 17

MS WHIPSER-O DOZER JANE-ET

USA 73947788

Born: 28-September-2015

Holstein Plaza Contacts:

Steve Mower +1 240-520-5906
Jennifer Dingbaum +1 320-250-2412
Hendrik Albada +1 240-520-1566
Amanda Hauck +1 570-765-0536

USA	Milk	Fat	Prot	SCS	DPR	PL	FLC	UDC	PTAT	DCE	NM	GTPI
4/16	+1275	+72	+45	2.67	+0.9	+6.9	+1.40	+2.15	+2.25	7.0%	+755	+2588

Mr Shot Dozer 1491-ET

72128280 *TV *TL *TY *TD
PTA +1401M +51F +48P 79%R 4/16
PTA +9.1PL 2.55SCS +2.1DPR
PTA +1.40T +1.78UDC +1.21FLC 78%R
GTPI +2583G

T-Gen-AC Denzel Janardy-ET

72641519 Very Good-86 VG-MS @ 3-00
GTPI+2387 +997M +79F +42P +2.11T

Butz-Butler Shotgun-ET

70476870 *TV *TL *TY *TD
PTA +1653M +53F +41P 98%R 4/16
PTA +.96T +1.22UDC +1.31FLC
GTPI +2297G

Miss OCD Robst Delicious-ET

3006989479 VG-87 VG-MS DOM
2-05 2x 305d 25780 3.5 908 3.3 841

Ronelee Shottbolt Denzel-ET

69716523 *TV *TL *TY *TD
PTA +1237M +27F +22P 91R 4/16
PTA +1.97T +1.43UDC +1.42FLC
GTPI +2225G

Benner Fork Janardan-ET

11271465C Very Good-87-2YR VG-MS
GTPI+2206 +968M +66F +39P +2.07T
2-05 2x 365d 32440 4.2 1377 3.5 1142

3rd thru 9th Dams

Benner Planet Jakova GP-83-2YR-CAN 2*
4-05 2x 365d 41455 4.6 1892 3.5 1446

• 2 Superior Lactation

Benner Goldwyn Jamarco VG-87-CAN 9*
2-02 2x 365d 35075 4.7 1651 3.5 1226

• 3 Superior Lactation

Benner Outside Joyce VG-85-2YR-CAN 11*
2-08 2x 365d 35547 4.1 1446 3.4 1195

• 9 VG daughters

• Sons at Semex, Genervations & Alta

Benner Aeroline Jemima VG-86-CAN 13*
6-01 2x 365d 47800 4.9 2366 3.3 1594

Life: (3 Lacs) 193901 4.5 8662 3.5 6722

• 2 Superior Lactations

Benner Luke Jean VG-86 23*

2-02 2x 365d 41482 3.7 1550 3.4 1391

• 1 EX & 13 VG daughters

• 1 Superior Lactation

Benner Grand Julia VG-87 2*

2-03 2x 365d 29312 4.4 130 3.3 961

Benner Blackstar Janet VG-89 11*

5-04 2x 365d 42760 4.3 1821 3.3 1398

• 3 Superior Lactations

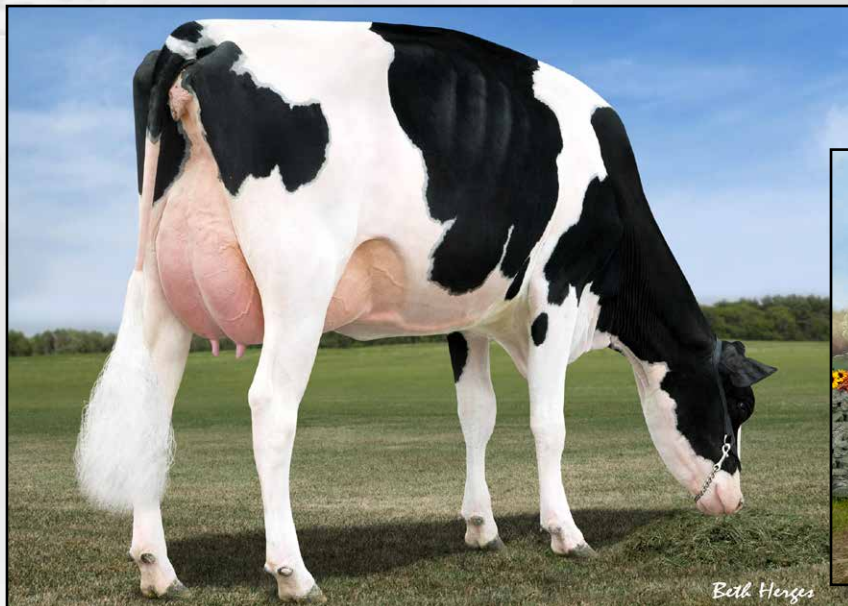
Caroldale Warden Josey

VG-88-CAN 8*

9-04 2x 365d 31773 3.9 1241 3.7 1182

• 1 Superior Lactation

Ready to FLUSH... Backed by the MISSYS!



MORSAN MAN D MISSY VG-85
2ND DAM OF LOT 18



EASTSIDE LEWISDALE GOLD MISSY EX-95
4TH DAM OF LOT 18

LOT 18

ENSENADA JNY-LOU YDR MAGGIE

840 3132342578

Born: 1-September-2015

Holstein Plaza Contacts:

Steve Mower +1 240-520-5906
Jennifer Dingbaum +1 320-250-2412
Hendrik Albada +1 240-520-1566
Amanda Hauck +1 570-765-0536

USA	Milk	Fat	Prot	SCS	DPR	PL	FLC	UDC	PTAT	DCE	NM	GTPI
4/16	+629	+65	+45	2.82	-0.6	+2.7	+1.81	+1.71	+2.51	4.8%	+574	+2412

Woodcrest Mogul Yoder

72254526 *TV *TL *TY *TD
PTA +1316M +95F +53P 79%R 4/16
PTA +5.1PL 2.97SCS +0.0DPR
PTA +2.17T +1.78UDC +1.78FLC 78%R
GTPI +2605G

Butz-Hill Magicmove-ET

72127401 Good Plus-83-2YR VG-MS
GTPI+2102 -508M +39F +18P +2.12T
2-08 3x 268d 21251 1137F 761P inc.

Mountfield SSI Dcy Mogul

3006972816 *TR *TV *TL *TY *TD
PTA +1348M +90F +42P 99%R 4/16
PTA +2.51T +2.56UDC +2.64FLC
GTPI +2523G

Woodcrest Planet Yakara

3008363689 Very Good-85
2-00 2x 365d 25613 4.0 1031 2.9 742

De-Su Freddie Galaxy-ET

69990052 *TV *TL *TY *TD
PTA +744M +46F +33P 99%R 4/16
PTA +1.80T +1.61UDC +1.01FLC
GTPI +2281G

Morsan Man D Missy-ET

11099278C Very Good-85-2YR
2-04 2x 305d 20450 5.5 1124 3.7 760
• Dam of MEGASIRE at ST

3rd thru 6th Dams

Valleyville Dolman Missy VG-89 EX-MS

3-11 2x 365d 44648 4.7 2075 3.5 1545

Eastside Lewisdale Gold Missy

EX-95-CAN EEEEE

5-00 2x 315d 36480 4.2 1532 3.2 1164

- Supreme Champ, Royal Winter Fair 2011
- Grand Champ, Royal Winter Fair 2011
- Supreme Champ, World Dairy Expo 2011
- Grand Champ, Int'l Holstein Show 2011
- Sold for 1.2 Million, Morsan Sale 2009
- 3x All-American
- 2x All-Canadian

Stadacona Outside Abel

8077661C Very Good-88-4YR-CAN 29*

3-03 2x 365d 36599 4.6 1695 3.0 1093

- Canadian Cow of the Year Finalist 2011
- HM All-Atlantic Winter Yearling 2001
- 1st Winter Calf, Drummond Show 2000

Stadacona Progress Anibel VG-85-CAN 2*

4-03 2x 365d 38186 3.4 1312 3.2 1208

Life (8 Lacs): 266137 3.4 9034 3.1 8311



TERMS AND CONDITIONS

GENERAL:

1. These terms are valid for all agreements made through this sale.
2. The organization of the sale is done by Holstein Plaza, part of and a trade name of AMS Genetics International LLC which will be referred to as the "Auction Company". Auction Company includes its agents, employees, officers, members and directors.
3. The party, which offers animals in this sale will be named after this as the "seller" and the party who buys through this sale and gets the sale item assigned, will be hereinafter identified as the "buyer".
4. The Auction Company is only acting as and will only act as an intermediary of an agreement between seller and buyer.
5. Days means business days and excludes weekends, but does not exclude holidays.

HOW DOES THE SALE WORK:

1. This is a traditional English auction, which starts low and allows bidders to place progressively higher bids.
2. Each lot closes at staggering times at the times designated for the auction on the website or circular applicable to this auction and the highest bidder then wins the lot.
3. All lots sell with reasonable starting bid.
4. When you place a bid, you agree to pay for the item if you're the winning bidder.
5. There are two ways of bidding - either directly through the internet (www.holsteinplaza.com) or by contacting one of the sale staff members listed.
6. All bids are made in U.S. dollars.
7. When you place a bid, you enter the maximum amount you're willing to pay for the lot. The other bidders and the seller will not be able to see your maximum bid. Through this Proxy bidding system, the Holstein Plaza auction system will increase your bid to the next lowest price when another user bids on the same item. The proxy bidding process continues until your maximum bid amount is reached or the auction ends. Every bidder is bound to his bid.
8. The sale is using the popcorn bid system/5-minute rule. Until that moment bids will be accepted.
9. On disputes, which may arise during the sale, the Auction Company decides such disputes. The sale shall be governed by the rules of Maryland Law, excluding its choice of law provisions. Buyer and Seller consent to personal jurisdiction and exclusive jurisdiction in the courts of the State of Maryland located in Washington County, Maryland.
10. The Auction Company will coordinate the paperwork and transfers.

PAYMENT:

1. Full payment for purchase is due to the Auction Company within 10 business days of the sale, no exceptions. The ownership stays with the seller until the complete payment of the invoiced amount has been received.
2. Sale invoices will be sent via e-mail or fax following the conclusion of the sale.
3. All live animals must be picked up or arrangements made with 20 days from the date of sale; this is the responsibility of the buyer. No cattle will be released to buyer until payment has been made. After 20 days, seller is entitled to \$5.00 per day board and a monthly interest fee of 1%.
4. Upon purchase the buyer takes over all risks after 10 days from the sale. The calf must be paid for on or within 10 days after the buyer received the invoice. Regardless of whether buyer makes timely payment, buyer is responsible for all risks after 10 days from the sale and should buy appropriate insurance.
5. The payment should be made as mentioned on the invoice.
6. Claims need to be made in writing to the seller within eight days after delivery to the buyer with a copy to the Auction Company.

EXCLUDING LIABILITY:

1. The Auction Company cannot be held responsible for errors on the internet site, sale catalog or in the advertisements.
2. The Auction Company cannot be held responsible for visual or non-visual representations regardless the size or nature of such defect of the animals sold.
3. The Auction Company does not take and will not have any responsibility for damage to persons or property, which may arise or have arisen because of or connected to the sale.
4. The cow indexes mentioned therein have been calculated or con-

verted by the herdbook in the country the donor cow is housed in accordance with the current methods. All official pedigrees of sale animals can be requested.

5. The Auction Company for the sale can never be held responsible for the bull and embryo contracts supplied with the sale items. The responsibility of the contract is entirely that of the organization supplying the contract, usually the seller.
6. The Auction Company can never be held responsible in case the embryos cannot be exported no matter what reason.
7. Any special terms must be communicated to the Auction Company in a reasonable manner to enable bidders to be notified, so that bidder notifications can occur prior the start of the auction.

TERMS FOR FIRST CHOICES:

1. First choice is the selection of resulting offspring from listed pregnancies mentioned on the catalog page. Terms are as follows: 25% down within 10 days of sale; balance on possession when youngest choice reaches four months of age. Seller will provide 9K genomic testing of all resulting calves prior to selection, at buyer's request. All sales are final including purchase of first choice females; successful bidder/buyer is responsible for first and second payment.
2. Seller to pay all necessary registry and other applicable fees to obtain registry certificate
3. Seller entitled to \$5.00 per day board after 4 months, based on age of youngest calf born in the group from which the selection is made.
4. Should a female chosen from the respective flush fail to meet breeding guarantees, or should for any reason a female not result from a respective flush, the following steps will be taken to fulfill the purchase agreement:
 - i. Seller will offer choice of remaining ETs from the respective flush
 - ii. If, and only if, the above cannot be resolved, a full refund will be made on all payments. Disappointing genomic test results will not be accepted as a reason to cancel the purchase.
5. If a full refund is to be made pursuant to paragraph 4, Auction Company will refund, and only be responsible to refund, any commission received; any claim for the remainder of the purchase price paid by the buyer is solely a direct claim against the seller only. If Auction Company is still holding proceeds from the buyer, and there is any dispute in returning the funds to seller, Auction Company may interplead such funds and deduct any attorney's fees and expenses for the cost of such interpleader action.

WARRANTIES:

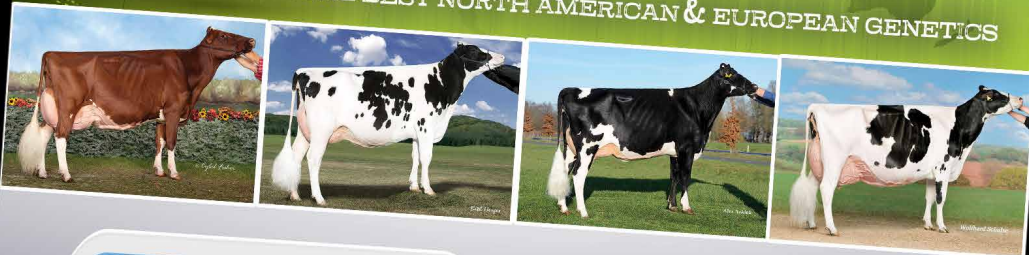
1. Each seller warrants clear title to the animal or lot, and the right to sell same.
2. To the best of the seller's knowledge, each animal is sound and healthy in every respect. Every precaution will be taken to represent the physical condition of each lot exactly as it is known. Heifers that have never calved are in no way guaranteed as to the condition of their udders following calving.
3. Breeding Warranty: The seller guarantees all animals to be breeders, but not beyond the purchase price, with the following understanding:
 4. Females--Any female when sold that has freshened within 90 days prior to the date of the sale is, by that fact, considered a breeder. Should any other female when fresh over 90 days fail to become pregnant within four months of sale date, or if less than eighteen months old when sold, fails to become pregnant by the time she reaches the age of 21 months, after having been bred to a bull known to be a breeder and after having been examined or treated by a licensed veterinarian, the matter shall be reported in writing to the seller within three months of the stated limit. The seller shall then have the privilege of four months' time in which to prove the animal a breeder by service to a registered Holstein bull before refunding the purchase price or making other settlement satisfactory to the buyer.
 5. Females bred when sold and pronounced in calf are presumed to be pregnant but pregnancy is not guaranteed. The seller makes no warranty that pregnant cows or heifers will deliver calves or that they will carry calves full term. If, after the sale embryos or oocytes are recovered from a female or an attempt is made to superovulate her, this negates the breeding warranty unless there is a separate written agreement between buyer and seller.

24/7 SHOPEMBRYO.COM

Now Open!



YOUR SOURCE FOR THE BEST NORTH AMERICAN & EUROPEAN GENETICS



★ Lorem ipsum dolor sit amet, consectetur adipiscing elit, sed do eiusmod tempor incididunt ut labore et dolore magna aliqua.

🏠 Lorem ipsum dolor sit amet, consectetur adipiscing elit, sed do eiusmod tempor incididunt ut labore et dolore magna aliqua.



✉ Lorem ipsum dolor sit amet, consectetur adipiscing elit, sed do eiusmod tempor incididunt ut labore et dolore magna aliqua.



🕒 Lorem ipsum dolor sit amet, consectetur adipiscing elit, sed do eiusmod tempor incididunt ut labore et dolore magna aliqua.

NOW OPEN YOUR 24-HOUR EMBRYO WEBSHOP
SHOPEMBRYO.COM



