



online heifer sale

Tuesday, October 4 through Friday, October 14, 2016
www.holsteinplaza.com | auction closes at 4:00 p.m. (EST)



photos © Han Hopman



Sourcing Genetics for the World



AMS Genetics can source embryos to fit your individual requirements. If you want production or shine in the show ring AMS Genetics is your starting point!

EXAMPLES OF DONOR COWS THAT AMS GENETICS IS WORKING WITH



KHW Regiment Apple EX-96 3E
Grand Champion, WDE 2011
Embryos from daughters/granddaughters



Silvermaple Damion Camomile EX-95
Res Grand Ch, World Dairy Expo 2011
Embryos from daughters



Savage-Leigh Leona EX-96 2E
6x All-American nominee
Embryos from daughters/granddaughters



Butz-Butler Gold Barbara EX-95
Intermediate Champ, WDE 2013
Embryos from daughters

AMS Genetics has 30 years experience in the sourcing and exportation of Holstein embryos to the world. Although many things changed over the 30 years, one thing is still constant, our commitment to our clients to provide great service and to locate and obtain the genetics that they need. If you are looking to purchase embryos to introduce new genetics into your A.I. company or your herd, AMS Genetics will be your partner in sourcing the U.S. genetic base and handling the exportation. We can adapt our selection to emphasize your selection criteria, so we focus on the genetics that will do the best job for your goals.

Services:

- Sourcing and locating embryo donors
- Herd visitation selection tours
- Contracting of donors
- Complete coordination of: embryo recovery, health certification and documentation, inland assembly and international shipment insurance
- Housing and management assistance for cattle housed in the United States
- Sire sourcing/selection for A.I. companies worldwide
- Commercial dairymen sire sourcing and selection



CONTACT INFO

AMS Genetics International LLC
Mail address: PO Box 12 | Fairplay, MD 21733-0012 USA
Office Phone: +001 240-329-0169
Steve Mower Cell: +001 240-520-5906
Email: steve.mower@amsgenetics.com

www.amsgenetics.com



www.holsteinplaza.com

ONLINE HEIFER SALE | OCTOBER 4-14, 2016

HOW DOES THE SALE WORK:

This is a traditional English auction, which starts low and allows bidders to place progressively higher bids. Each lot closes at staggering times (every 3 minutes) starting at 4:00 p.m. (EST) on Friday, October 14, and the highest bidder then wins the lot.

There are two ways of bidding - either directly through the internet (www.holsteinplaza.com) or by contacting one of the sale staff members listed. All bids are made in U.S. dollars.

When you place a bid, you enter the maximum amount you're willing to pay for the lot. The other bidders and the sale organization will not be able to see your maximum bid. Through this Proxy bidding system, the Holstein Plaza auction system will increase your bid to the next lowest price when another user bids on the same item. The proxy bidding process continues until your maximum bid amount is reached or the auction ends. Every bidder is bound to his bid. The sale is using the popcorn bid system/5-minute rule. Until that moment bids will be accepted.

All lots sell with reasonable starting bid. The bid increments will be as follows: < \$10,000 - \$250; \$10,000-\$20,000 - \$500; \$20,000-\$50,000 - \$1,000; \$50,000-\$100,000 - \$2,000 and > \$100,000 - \$5,000

Please refer to the terms and conditions in the back of your sale catalog for complete details.

sale managed by:



THE BUYING STOP FOR DAIRYMEN AROUND THE WORLD

P.O. Box 12, Fairplay, Maryland 21733-0012 USA

Ph. 240-329-0169 | Fax 240-469-4231

info@holsteinplaza.com | www.holsteinplaza.com

SALES STAFF:

HOLSTEIN PLAZA

Jennifer Dingbaum +1 320-250-2412

jennifer.dingbaum@holsteinplaza.com

Steve Mower +1 240-520-5906

steve.mower@amsgenetics.com

Hendrik Albada +1 240-520-1566

hendrik.albada@holsteinplaza.com

Ray LeBlanc +1 802-249-2155

Nick Raggi +1 443-762-8338

Bill Rauen +1 563-607-0694

Austin Yoder +1 478-244-9063

Amanda Hauck +1 570-765-0536

AUSTRALIA

Declan Patten 011 61499 949 292

EUROPE

Jan de Vries +31 (0)6 26250502

jandevries@diamond-genetics.nl

Arjan van der Vlis +31 (0)6 43985150

arjan@eurogenes.nl

Alison Maddrell +44 77 48960267

alison@diamondgenetics.co.uk



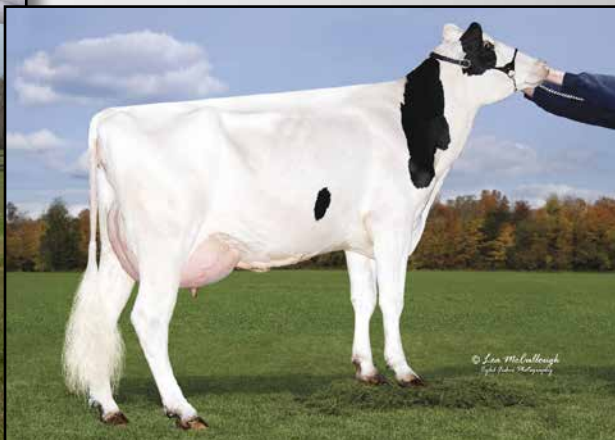
MANAGEMENT/TRANSPORT:

All auction sales will be handled through AMS Genetics International. AMS will also assist as needed in transport coordination. Transport is the cost of the buyer and will not be allowed until payment has been made. For foreign buyers, AMS Genetics can assist with housing and management of purchases.

HOUSING CONTACT: Steve Mower 240-520-5906



OCD SUPERSIRE 9882 VG-85-2YR
DAM OF LOT 1



OCD ROBUST SHIMMER EX-90 DOM
2ND DAM OF LOT 1

LOT 1

PINE-TREE 9882 MODE 7052-ET

840 3132116904

Born: 20-April-2016

Holstein Plaza Contacts:

Steve Mower +1 240-520-5906
Jennifer Dingbaum +1 320-250-2412
Hendrik Albada +1 240-520-1566

| USA | Milk | Fat | Prot | SCS | DPR | PL | FLC | UDC | PTAT | DCE | NM | GTPI |
|------|-------|-----|------|------|------|------|-------|-------|-------|------|------|-------|
| 8/16 | +1253 | +83 | +53 | 2.83 | +3.4 | +7.6 | +1.12 | +1.74 | +2.23 | 4.5% | +864 | +2735 |

Bacon-Hill Modesty-ET

3013654627 *TV *TL *TY *TD
PTA +1864M +98F +64P 76%R 8/16
PTA +8.0PL 3.04SCS +2.1DPR 3.6%DCE
PTA +2.35T +2.33UDC +2.03FLC 75%R 8/16
GTPI +2847G

OCD Supersire 9882-ET

3011890130 Very Good-85-2YR VG-MS
GTPI+2701 +1503M +97F +59P +1.67T
2-01 2x 231d 22066 3.9 870 3.1 684 inc.

- Hottest Cow in the Breed!
- Dam of:
- No. 2 GTPI Female in the Breed (8/16)
- No. 1 CM\$ Male
- No. 1 NM\$ Male
- No. 1 GTPI Female in Europe (9/16)
- Two more Top 10 NM\$ & CM\$ males
- Numerous offspring that are No. 1 GTPI and/or NM\$ for their sire!

Siemers Mogul Pety

3010660326 *TV *TL *TY *TD
PTA +1146M +55F +42P 80R 8/16
PTA +2.60T +2.78UDC +2.00FLC
GTPI +2476G

Bacon-Hil Suprs Modesty-ET

3010945893 Very Good-85-2YR DOM

Seagull-Bay Supersire-ET

USA 69981349 *TV *TL *TY *TD
PTA +2375M +114F +73P 99%R 8/16
PTA +1.32T +.66UDC +.32FLC
GTPI +2657G

OCD Robust Shimmer-ET

3008315320 Excellent-90 EX-MS DOM
GTPI+2387 +1223M +60F +39P +1.76T
2-03 3x 365d 34350 3.5 1200 3.2 1086

3rd thru 9th Dams

Ammon-Peachey Shana
VG-87-2YR-CAN DOM 1*
5-03 2x 365d 44802 4.3 1920 3.0 1362
• 2 Superior Lactation
• Full sister to Ammon-Peachey Shauna EX-91

Pine-Tree Martha Sheen-ET
VG-86 VG-MS DOM
1-11 3x 365d 31210 4.2 1305 3.3 1027

Pine-Tree Missy Martha-ET VG-86 DOM
2-02 3x 365d 34730 3.6 1266 3.1 1070

Wesswood-HC Rudy Missy-ET
EX-92 3E DOM
4-11 3x 365d 40880 4.1 1665 3.2 1308
Life: 1262d 119610 4.1 4885 3.2 3804

Wesswood Elton Mimi EX-90 GMD DOM
3-05 2x 365d 35380 3.3 1160 3.2 1121

Wesswood Mandingo Ivy VG-87
6-05 2x 365d 36330 3.6 1305 3.0 1087
Life: 1835d 144060 3.4 4933 3.1 4412

Wesswood Astro Matt Esther
VG-87 GMD DOM
6-08 2x 365d 31860 3.5 1125 3.1 982
Life: 1847d 140110 3.6 5029 3.2 4424

Wesswood Bell Claudette
VG-87 GMD DOM
9-10 2x 365d 38810 3.6 1383 2.9 1140
Life: 3634d 280980 3.6 9997 3.1 8625

No. 1 GTPI R&W without any Haplotypes!



DYMENTHOLM SUNVIEW SASSY-ET *RC VG-85-2YR DOM
2ND DAM OF LOT 2



JOSEY-LLC SASSYPANTS-RED-ET
DAM OF LOT 2

LOT 2

JOSEY-LLC CPTN SASSY-RED

840 313527528

Born: 9-July-2016

No. 1 GTPI R&W without any haplotypes & No. 1 GTPI Captain in the Breed!

Holstein Plaza Contacts:

Steve Mower +1 240-520-5906
Jennifer Dingbaum +1 320-250-2412
Hendrik Albada +1 240-520-1566

| USA | Milk | Fat | Prot | SCS | DPR | PL | FLC | UDC | PTAT | DCE | NM | GTPI |
|------|------|-----|------|------|------|------|-------|-------|-------|------|------|-------|
| 4/16 | +924 | +61 | +41 | 2.66 | +3.0 | +6.4 | +1.44 | +1.53 | +1.52 | 5.5% | +704 | +2539 |

Aprday-F 779 Captain-Red-ET

840 3012503618 *TV *TL *TY *TD
PTA +367M +62F +30P 76%R 8/16
PTA +6.1PL 2.76SCS +2.3DPR
PTA +1.94T +2.39UDC +1.00FLC 73%R
GTPI +2462G

Josey-LLC Sassypants-Red-ET

USA 73615389 Born: October 12, 2014
GTPI+2447 +1210M +24F +35P +2.00T

K-Manor Epic Save-ET *RC

USA 70957183 *TV *TL *TY *TD
PTA +668M +32F +22P 83R 8/16
PTA +1.87T +1.82UDC +1.64FLC
GTPI +2326G

April-Day A Comtessa-ET *RC

USA 71878764

Ladys-Manor Olympian *RC

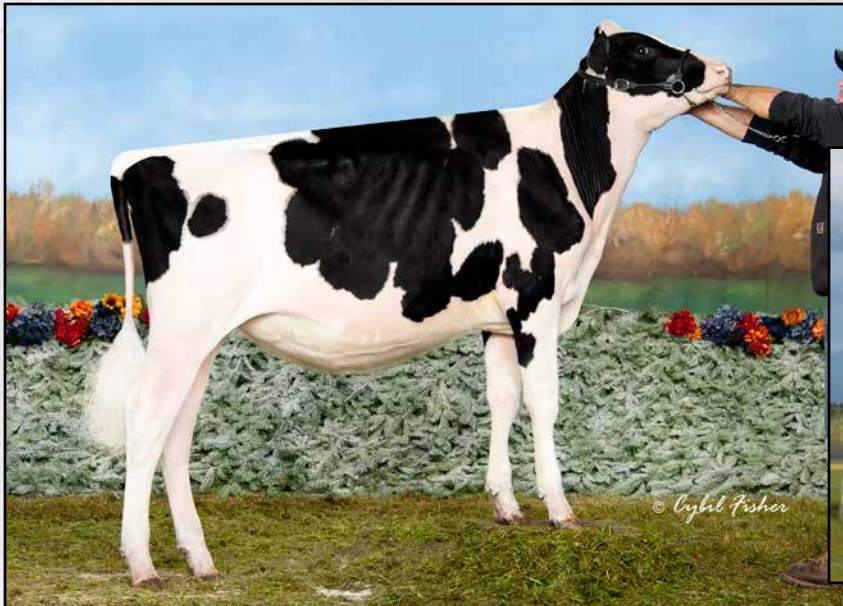
USA 71592946 *TV *TL *TY *TD
PTA +826M +5F +31P 83%R 8/16
PTA +1.82T +2.55UDC +.88FLC
GTPI +2318G

Dymentholm Sunview Sassy-ET

USA 71661934 Very Good-85-2YR DOM
2-03 2x 305d 26680 3.9 1031 3.4 894

3rd thru 13th Dams

Des-Y-Gen Planet Silk-ET *RC EX-90
2-02 2x 365d 29990 4.5 1351 3.2 960
• Nominated HI Global Red Impact Cow
• Dam of *RC Sympatico, Seneca and Stoic
Gen-I-Beq Bolton Silence *RC VG-85-CAN
2-04 2x 365d 30002 4.6 1391 3.6 1069
Gen-I-Beq Goldwyn Secret VG-87-CAN 4*
5-05 2x 365d 30573 4.5 1389 3.4 1038
Gen-I-Beq Durham Sherry VG-87-CAN 7*
5-02 2x 365d 40036 3.9 1574 3.2 1268
Glen Drummond Splendor
VG-86-2YR-CAN 36*
4-10 2x 314d 26510 4.2 1124 3.2 840
Glen Drummond Aero Flower
VG-88-CAN 18*
2-03 2x 326d 25622 4.0 1032 3.4 882
Glen Drummond Shower EX-CAN 13*
4-10 2x 365d 28583 4.8 1380 3.6 1016
Glen Drummond S C Jo Beth
EX-2E-CAN 7*
Life (6 Lacs): 141637 4.2 5994 3.2 3593
Glen Drummond Matt Beth VG-85 4*
11-10 2x 365d 25038 3.7 935
Life (5 Lacs): 105953 4.1 4295
Glen Drummond Marquis Beth VG-CAN
Life (8 Lacs): 112688 4.2 4766
Ferglynn Rag Apple Bertha VG-CAN 3*
7-00 2x 365d 27796 4.7 1303
Life (9 Lacs): 208857 4.0 8344



SUNNYLODGE GREENLANE LEONA
SELLS AS LOT 3

GREENLANE DESTRY LAUREL EX-93-CAN
MATERNAL SISTER TO DAM OF LOT 3

LOT 3

SUNNYLODGE GREENLANE LEONA

Holstein Plaza Contacts:

Steve Mower +1 240-520-5906
Jennifer Dingbaum +1 320-250-2412
Hendrik Albada +1 240-520-1566

11816958C Born: 5-December-2014 Bred: Aug. 27, 2016 to SOLOMON
also implanted embryo (Domicole Chelios x Cleland Advent Korie-Red EX-94)

- note seller is willing to buy back live calf for \$3000 on day it's born

- Reserve Junior Champion, Midwest Fall National Holstein Show 2016
- Junior All-American Winter Calf 2015
- 10th Winter Calf, International Holstein Show 2015
- 2nd Winter Calf, Midwest Fall National Holstein Show 2015
- All-Minnesota Winter Calf 2015

Entered International Holstein Show, World Dairy Expo 2016

Maple-Downs-I G W Atwood-ET

CAN 8956379 *TV *TL *TY *TD
PTA -26M +30F +3P 99%R 8/16
PTA -.1PL 3.04SCS -3.0DPR
PTA +3.65T +2.58UDC +2.83FLC 99%R
GTPI +1927G

Greenlane Alexander Lexie-ET

CAN 11287013 Very Good-85-CAN
2-02 2x 365d 26281 4.8 1267 3.6 934
3-09 2x 365d 34505 4.7 1618 3.5 1204
Maternal sisters to Lexie

Greenlane Destry Laurel EX-93-CAN

- Grand Champ, Western Fall National 2014
- Int & HM Grand Champ, BC Spring 2013
- All-American R&W Milking Yearling 2012
- All-American R&W Fall Calf 2011
- Sunnylodge Reali Laurel-Red VG-87
- Nom All-American R&W Jr 2-Yr-Old 2015
- Junior All-American R&W Jr 2-Yr-Old 2015

Braedale Goldwyn

CAN 10705608 *TV *TL *TY *TD
PTA -358M +13F +1P 99%R 8/16
PTA +1.79T +1.51UDC +1.49FLC
GTPI +1880G

MD-Delight Durham Atlee-ET

USA 131704103 Excellent-92 GMD DOM
3-11 2x 365d 38290 5.5 2091 3.3 1249

Golden-Oaks St Alexander-ET

61133837 *TR *TV *TL *TY *TD
PTA +163M +51F +2P 99R 8/16
PTA +1.04T +.49UDC +.87FLC
GTPI +1751G

Sunnylodge M B Leona-Red-ETS

CAN 9669673 Very Good-86
2-00 2x 365d 22001 3.9 848 3.5 773

3rd thru 10th Dams

Misty Springs SS Leona VG-87-2YR-CAN
4-06 2x 365d 35551 4.3 1526 3.4 1208
Life: (4 Lacs) 110774 4.1 4604 3.4 3821

Sunnylodge James Lucille

VG-87-3YR-CAN 1*
2-03 3x 365d 35375 3.6 1259 3.3 1179

Sunnylodge Leader Lona

VG-89-CAN 3*
6-09 2x 36d 34471 3.7 1276 3.2 1116
Life: (4 Lacs) 146340 4.1 5932 3.5 5155

Sunnylodge Broker Shana

VG-85-3YR-CAN 17*
4-06 2x 365d 27128 4.5 1208 3.5 941

Sunnylodge Prelude Spottie

VG-87-3YR-CAN 18*
3-04 2x 365d 30091 4.1 1224 3.5 1058

- Canadian Cow of the Year 1998

Dam of Sunnylodge Linjet

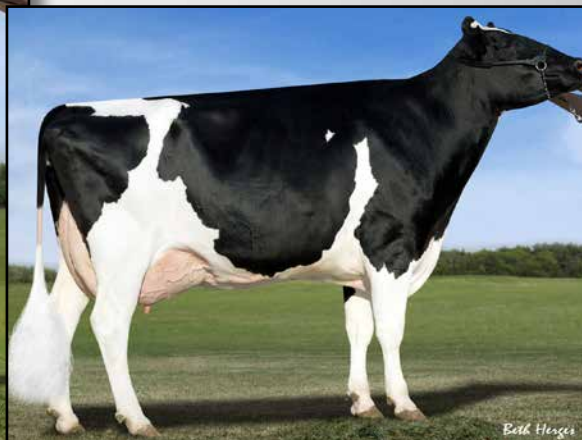
Sunnylodge He Man Judy VG-86-CAN
4-07 2x 360d 22509 4.2 950 3.3 741

Sunnylodge Lolie VG-85-CAN

Life: (7 Lacs) 187027 3.5 6434 3.1 3362

Sunnylodge Edith EX-CAN

Life: (7 Lacs) 141081 3.8 5328 3.0 1067



KHW SUPER ADERYN *RC EX-90 DOM
SELLS AS LOT 4

KHW GOLDWYN AIKO EX-91 2E DOM
DAM OF LOT 4

LOT 4

KHW SUPER ADERYN *RC EX-90 DOM

Holstein Plaza Contacts:

Steve Mower +1 240-520-5906
Jennifer Dingbaum +1 320-250-2412
Hendrik Albada +1 240-520-1566

USA 140969320 Born: 29-September-2010 Excellent-90 EX-MS DOM
Fresh and sells ready to flush or IVF DONOR DAM
Several sons in A.I. including Whatsapp at CRV and Atwork at Semex

| USA | Milk | Fat | Prot | SCS | DPR | PL | FLC | UDC | PTAT | DCE | NM | GTPI |
|------|------|-----|------|------|------|------|-------|-------|-------|------|------|-------|
| 8/16 | -159 | +26 | +21 | 2.72 | +2.4 | +5.7 | +1.60 | +1.60 | +1.72 | 5.7% | +483 | +2266 |

Charlesdale Superstition-ET

USA 62065919 *TR *TV *TL *TY *TD
PTA +1121M -10F +29P 99%R 8/16
PTA +5.7PL 2.72SCS +3.5DPR 7.1%DCE
PTA +.87T +1.06UDC +.23FLC 99%R
GTPI +2110G

KHW Goldwyn Aiko-ET *RC

USA 137658044 Excellent-91 2E DOM
2-06 2x 365d 24660 6.4 1568 4.0 983
5-07 2x 365d 29150 5.1 1500 4.0 1159
• Multiple sons in A.I.

Maternal sister to:

KHW Regiment Apple-Red-ET
EX-96 3E EEEEE DOM

- Reserve Grand Ch, Int'l R&W Show 2013
- 1st 125,000 lb. cow, Grand Int'l R&W 2013
- Grand Ch, Grand Int'l R&W Show 2011
- Res Grand Ch, Royal Winter R&W 2009
- HI World Champion R&W Cow 2010
- \$1,000,000 High Seller Global Glamour 2008

End-Road PVF Boliver-ET

USA 132586443 *TV *TL *TY *TD
PTA +468M +19F +20P 99R 8/16
PTA +.18T +.38UDC -.93FLC
GTPI +1727G

Charlesdale Sweet Star

USA 133701030 Very Good-85 DOM
Life: 1391 105450 3.3 3519 3.4 3589

Braedale Goldwyn

CAN 10705608 *TV *TL *TY *TD
PTA -358M +13F +1P 99%R 8/16
PTA +1.79T +1.51UDC +1.49FLC
GTPI +1880G

Kamps-Hollow Altitude-ET

129136431 Excellent-95 EEEEE 2E DOM
2-00 2x 305d 24510 3.8 922 3.7 904
7-00 2x 305d 34450 4.5 1562 3.4 1163
• Dam to proven bulls Advent, Jotan & Acme
• Red Impact Cow of the Year 2009

3rd thru 8th Dams

Clover-Mist Alisha-ET *RC EX-93 3E DOM
8-07 2x 365d 36920 4.2 1553 3.4 1258
Life: 2999d 226470 4.7 10659 3.6 8149

Clover-Mist Augy Star-ET *RC
EX-94 4E DOM

7-10 3x 365d 43140 5.0 2136 3.3 1421
Life: 2486d 206250 4.7 9793 3.5 7187

D-R-A August EX-96 EEEE 4E DOM
8-05 2x 365d 27460 4.3 1187 3.2 871
Life: 3443d 190200 4.4 8281 3.3 4457

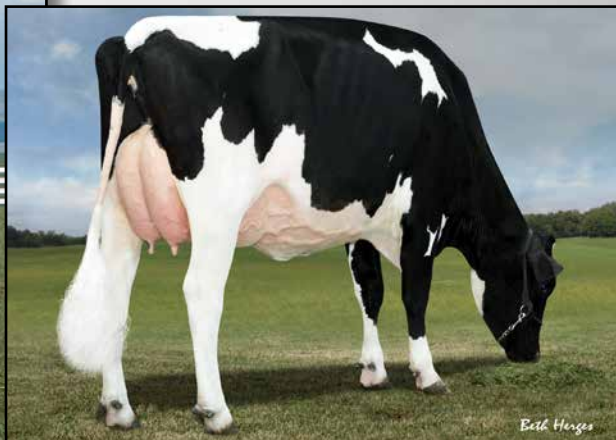
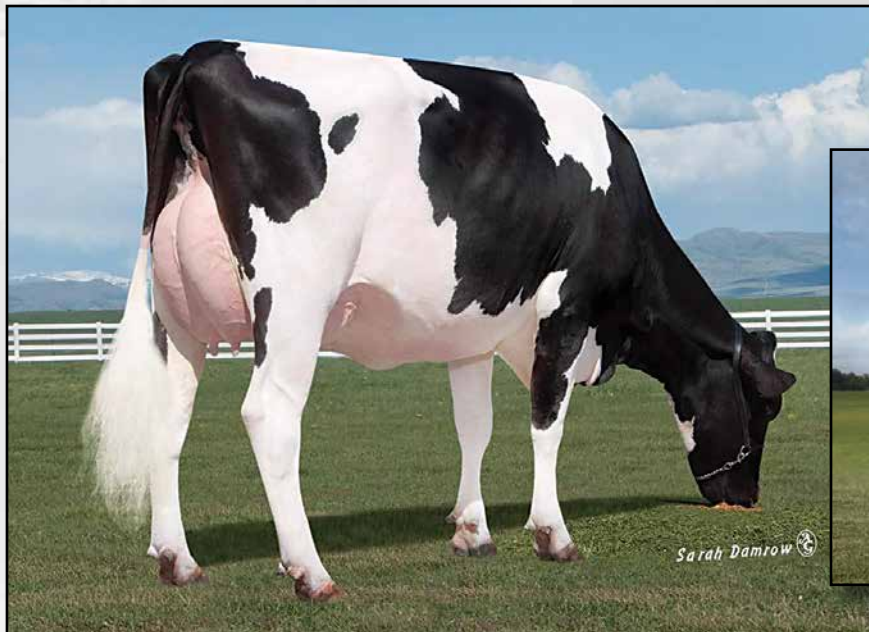
• Nominated All-American Aged Cow 1986

D-R-A Ideal Precious Leader EX-90 2E
7-06 2x 358d 20090 3.9 787 3.4 675

D-R-A Princess Lad Leader EX-90 3E
9-05 2x 305d 19160 4.2 809Life: 7L
187142 4.6 8543 3.3 6228

Hickorymea Art Penny VG-85 DOM

Nearly +2700G, +3.00T from a Unique Cow Family!



BRYHILL SS SATEEN P-ET
2ND DAM OF LOT 5

VENTURE SHOTBOLT SIZZLE P VG-86-2YR
3RD DAM OF LOT 5

LOT 5

TOG KIM 48275

840 3134898000

Born: 15-March-2016

Holstein Plaza Contacts:

Steve Mower +1 240-520-5906
Jennifer Dingbaum +1 320-250-2412
Hendrik Albada +1 240-520-1566

| USA | Milk | Fat | Prot | SCS | DPR | PL | FLC | UDC | PTAT | DCE | NM | GTPI |
|------|-------|-----|------|------|------|------|-------|-------|-------|------|------|-------|
| 8/16 | +1637 | +83 | +49 | 2.91 | +1.5 | +5.1 | +1.74 | +2.96 | +2.93 | 5.1% | +763 | +2689 |

Westenrade AltaSpring

NL 9490336666 *TV *TL *TY *TD
PTA +1471M +74F +52P 79%R 8/16
PTA +690NM\$ +3.6PL 2.99SCS +.9DPR
PTA +2.35T +2.78UDC +1.93FLC 76%R
GTPI +2588G

Seagull-Bay Sunline-ET

840 3124720519 Good Plus-83-2YR
GTPI+2524 +682M +43F +29P +2.56T

Mountfield SSI Dcy Mogul

3006972816 *TR *TV *TL *TY *TD
PTA +1292M +85F +40P 99%R 8/16
PTA +2.46T +2.57UDC +2.62FLC
GTPI +2514G

Westenrade Carrera

NL 931730982 Very Good-85

Cookiecutter Petron Halogen

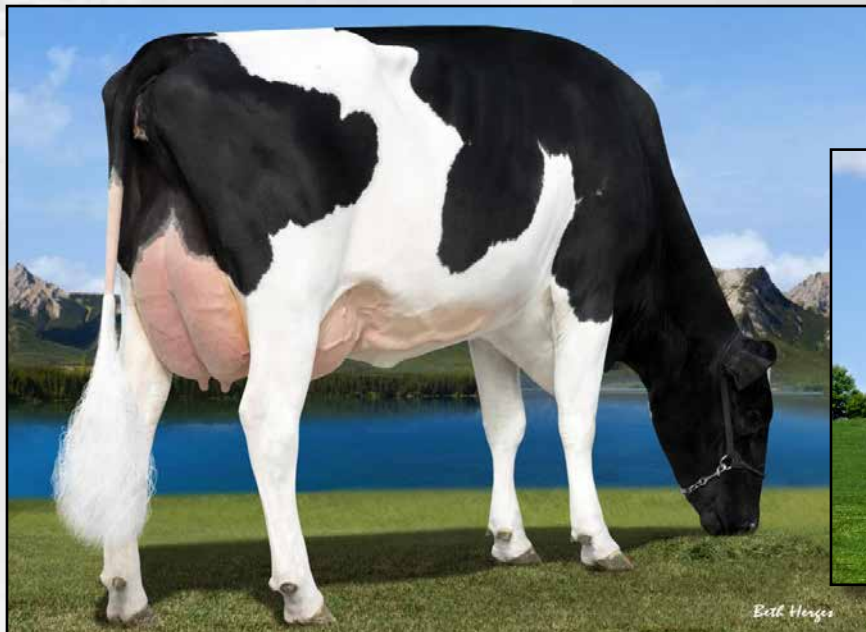
3008710387 *TV *TL *TY *TD
PTA -251M -5F +0P 95%R 8/16
PTA +2.08T +2.58UDC +.97FLC
GTPI +2307G

Bryhill SS Sateen P-ET

1081333333C Very Good-87-2YR EX-MS
GTPI+2451 +1310M +70F +44P +2.03T
2-02 2x 365d 34190 3.9 1363 3.0 1055
• Former No. 1 GTPI Polled Female
• Sons in A.I.

3rd thru 9th Dams

Venture Shottbolt Sizzle P VG-86-2YR
Venture Goldwyn Soup P GP-83-3YR-CAN
1-11 2x 365d 25620 4.7 1202 3.5 911
• 2nd Sr. Calf Prince Edward 2010
Hickorymea-I I Ad Sweet P-Red
GP-84-3YR-CAN I*
4-01 2x 365d 24838 5.1 1246 3.7 895
Hickorymea Airliner Tasha P EX-90 1*
3-01 2x 365d 25289 5.5 1384 3.5 895
Hickorymea Gator Tanya P EX-91 2E
5-07 2x 365d 27251 5.0 1376 3.4 937
Life: 5L 104582 4.9 5137 3.4 3582
Hickorymea Houdini Tabbi EX-90 3E
8-05 2x 365d 27941 4.4 1232 3.3 930
Life: 7L 187142 4.6 8543 3.3 6228
Hickorymea Art Penny VG-85 DOM



BRYHILL RANSOM MARQUISSE-ET GP-83
2ND DAM OF LOT 6

PEAK MARQ A1 942-ET
DAM OF LOT 6

LOT 6

COMFORT MODESTY ALICE

CAN 12512423

Born: 19-June-2016

Holstein Plaza Contacts:

Steve Mower +1 240-520-5906
Jennifer Dingbaum +1 320-250-2412
Hendrik Albada +1 240-520-1566

| USA | Milk | Fat | Prot | SCS | DPR | PL | FLC | UDC | PTAT | DCE | NM | GTPI |
|------|------|-----|------|------|------|------|-------|-------|-------|------|------|-------|
| 8/16 | +856 | +76 | +46 | 2.97 | +2.5 | +8.1 | +1.66 | +1.83 | +2.03 | 3.3% | +842 | +2657 |

Bacon-Hill Modesty-ET

3013654627 *TV *TL *TY *TD
PTA +1864M +98F +64P 76%R 8/16
PTA +8.0PL 3.04SCS +2.1DPR 3.6%DCE
PTA +2.35T +2.33UDC +2.03FLC 75%R
GTPI +2847G

Peak Marq A1 942-ET

840 3126668032 Born: November 12, 2014
GTPI+2515 +895M +50F +42P +1.82T
Due May 12, 2017 & tremendous individual

Dam of:

Thurler Jedi Royal GTPI+2858

Siemers Mogul Pety

3010660326 *TV *TL *TY *TD
PTA +1146M +55F +42P 80R 8/16
PTA +2.60T +2.78UDC +2.00FLC
GTPI +2476G

Bacon-Hil Suprs Modesty-ET

3010945893 Very Good-85-2YR DOM

Zahbulls alta1stClass-ET

USA 71441918 *TV *TL *TY *TD
PTA +383M +61F +21P 79%R 8/16
PTA +2.83T +3.27UDC +2.01FLC
GTPI +2487G

Bryhill Ransom Marquisse-ET

840 3011619658 Good Plus-83
GTPI+2568 +880M +66F +45P +1.07T
2-02 2x 365d 27986 4.6 1278 3.6 995

3rd thru 13th Dams

Sully Robust 720-ET
GP-83-2YR-CAN VG-MS
4-00 3x 353d 33100 3.6 1190 3.5 1149

• Multiple sons at Alta Genetics

Sully Planet Manitoba-ET

VG-85 DOM 9*
4-01 3x 365d 43669 3.6 1565 3.2 1402

• Dam of Sully Hart Meridian at Semex

Sully Shottle May-TW EX-91 DOM

5-04 2x 365d 38970 3.5 1354 3.1 1226

Ms Sully Oman Muetze-ET EX-90 DOM

4-08 2x 365d 33860 3.4 1164 3.4 1150

Johnan Marshall Mint VG-85 VG-MS

Life: 1541d 124180 3.1 3880 3.0 4059

Poly-Kow Rudolph Mink-ET

VG-86 GMD DOM
2-00 2x 365d 29290 3.6 1054 3.4 987

Poly-Kow Linda Mindy VG-88 GMD DOM

Life: 2057d 150290 3.9 5820 3.0 4556

Footprint Nick Milan

VG-89 GMD DOM
5-10 2x 365d 34530 4.1 1430 3.3 1128

Footprint Mazda Command

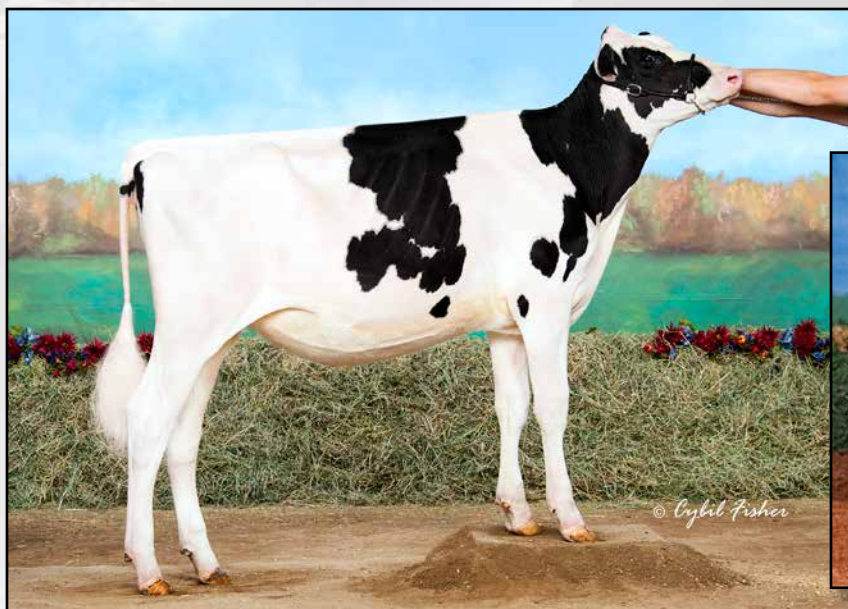
VG-85 GMD DOM
3-03 2x 305d 30280 4.2 1270 3.2 959

Footprint Ned Boy Mercedes VG-85

Life: 2085d 134700 3.5 4772 2.8 3760

Footprint Cor-Vel Madonna-TW VG-85

4-03 2x 350d 19520 3.5 684 2.9 560



MS ST-JACOB DEMPSEY AGAIN
LOT 7



KINGSWAY TERRASON ALLIE EX-95-2E-CAN
3RD DAM OF LOT 7

LOT 7

MS ST-JACOB DEMPSEY AGAIN

Holstein Plaza Contacts:

Steve Mower +1 240-520-5906
Jennifer Dingbaum +1 320-250-2412
Hendrik Albada +1 240-520-1566

840 3127934905 Born: 15-September-2015
• 5th Fall Calf, Midwest Fall National Holstein Show 2016

Lirr Drew Dempsey

USA 61083609 *TV *CD *TL *TY *TD
PTA -467M +14F +5P 99%R 8/16
PTA +109NM\$ -1.5PL 2.62SCS -1.1DPR
PTA +2.43T +1.92UDC +1.90FLC 99%R
GTPI +1924G

Kingsway Sid Ava-ET

CAN 11432107 Excellent-90
2-04 2x 271d 18693 3.6 668 3.1 580

Braedale Goldwyn

CAN 10705608 *TV *TL *TY *TD
PTA -358M +13F +1P 99%R 8/16
PTA +1.79T +1.51UDC +1.49FLC
GTPI +1880G

Kerndt Snezy Derry Drew

USA 207658039 Very Good-88
3-08 2x 365d 31150 3.8 1191 3.1 955

Pine-Tree Sid

62175895 *TV *TL *TY *TD
PTA -456M +5F -7P 99R 8/16
PTA +2.26T +2.00UDC +.08FLC
GTPI +1598G

Kingsway Dundee Abra Codabra

CAN 7645875 Excellent-90 EEEEEV 12*
2-02 2x 365d 22306 3.9 875 3.4 753
• All-Canadian Summer Yearling 2007

Dam of:

Kingsway Sanchez Arangatang

EX-95-2E-CAN
• All-Canadian 2011 & 2010
• Res. All-Canadian 2010

3rd thru 8th Dams

Kingsway Terrason Allie

EX-95-2E-CAN 3* 95-MS
6-02 2x 365d 37291 4.6 1731 3.4 1265
• Reserve All-Canadian Sr 3-Year-Old 2006
• Nominated All-Canadian 2007
• Reserve Grand, ON Spring Discovery 2009
• HM Int Champ, Royal Winter Fair 2006

Kingsway Progress Ashley EX-CAN 6*

7-02 2x 365d 34881 3.3 1160 3.0 1052
Life: (5 Lacs) 155282 3.4 1343 3.1 1215
Nelcam Tab Astra EX-3E-CAN 6*
Life: (7 Lacs) 173159 3.5 6146 3.2 5606
• Reserve Grand Northlumberland 1996

Nelcam Prestar Astra

VG-88-4YR-CAN 3*
Life: (4 Lacs) 71340 3.5 2491 3.2 2298
Nelcam Count Alice EX-CAN
Life: (6 Lacs) 118559 3.6 4301 3.4 1450
Nelcam Leader Astra EX-CAN 2*
Life: (6 Lacs) 75364 3.4 2581

PTAT+3.44 fancy Archrival granddaughter of APPLE!



KHW REGIMENT APPLE-RED EX-96 3E DOM
2ND DAM OF LOT 8

MS APPLES AUDRINA-ET VG-86-2YR
DAM OF LOT 8

LOT 8

MS TJR SANDAN ARCH 34957

840 3137839102

Born: 6-June-2016

Holstein Plaza Contacts:

Steve Mower +1 240-520-5906
Jennifer Dingbaum +1 320-250-2412
Hendrik Albada +1 240-520-1566

| USA | Milk | Fat | Prot | SCS | DPR | PL | FLC | UDC | PTAT | DCE | NM | GTPI |
|------|------|-----|------|------|------|----|-------|-------|-------|------|------|-------|
| 8/16 | -862 | +17 | -11 | 2.72 | -1.0 | +7 | +2.82 | +2.92 | +3.44 | 8.1% | +111 | +1978 |

Eclipse Atwoods Archrival-ET

AUS 01786521
PTA -33M +23F -1P 78%R 8/16
PTA +135NM\$ +9PL 2.87SCS -2.4DPR
PTA +3.62T +2.70UDC +2.60FLC 77%R
GTPI +1973G

Ms Apples Audrina-ET

USA 72227622 Very Good-86-2YR VG-MS

APPLE!

- Reserve Grand Ch, Int'l R&W Show 2013
- 1st 125,000 lb. cow, Grand Int'l R&W 2013
- Grand Ch, Grand Int'l R&W Show 2011
- Unanimous All-American Jr 2-Yr-Old 2006
- All-American R&W Jr 2-Yr-Old 2006
- HHM All-American Jr 3-Yr-Old 2007
- Nom All-American R&W 5-Yr-Old 2009
- Res Grand Ch, Royal Winter R&W 2009
- HI World Champion R&W Cow 2010
- \$1,000,000 High Seller Global Glamour 2008

Maple-Downs-I G W Atwood-ET

CAN 8956379 *TR *TV *TL *TY *TD
PTA -26M +30F +3P 99%R 8/16
PTA +3.65T +2.58UDC +2.83FLC
GTPI +1927G

Bollenholster Anya-ET

DEU 1402793646 Very Good-87-2YR

Amighetti Numero Uno-ET

ITA 17990915143 *TV *TL *TY *TD
PTA -372M +59F +3P 99%R 8/16
PTA +2.46T +2.30UDC +1.64FLC
GTPI +2397G

KHW Regiment Apple-Red-ET

135511521 Excellent-96 3E EEEEE DOM
4-01 2x 365d 35750 4.7 1682 3.7 1314
9-01 2x 365d 36750 4.3 1582 3.5 1280
7-00 2x 365d 33280 5.0 1654 3.6 1191
5-03 2x 365d 30810 5.0 1527 3.9 1212
2-02 2x 365d 28930 4.5 1297 3.6 1033
Life: 2898d 240640 4.7 11394 3.7 9013

3rd thru 8th Dams

Kamps-Hollow Altitude-ET

EX-95 EEEEE 2E DOM
7-00 2x 305d 34450 4.5 1562 3.4 1163

- Dam to proven bulls Advent, Jotan & Acme

- Red Impact Cow of the Year 2009

Clover-Mist Alisha-ET *RC EX-93 3E DOM

8-07 2x 365d 36920 4.2 1553 3.4 1258

Life: 2999d 226470 4.7 10659 3.6 8149

Clover-Mist Augy Star-ET *RC

EX-94 4E DOM

7-10 3x 365d 43140 5.0 2136 3.3 1421

Life: 2486d 206250 4.7 9793 3.5 7187

D-R-A August EX-96 EEEE 4E DOM

8-05 2x 365d 27460 4.3 1187 3.2 871

Life: 3443d 190200 4.4 8281 3.3 4457

- Nominated All-American Aged Cow 1986

D-R-A Ideal Precious Leader EX-90 2E

7-06 2x 358d 20090 3.9 787 3.4 675

D-R-A Princess Lad Leader EX-90 3E

9-05 2x 305d 19160 4.2 809Life: 7L

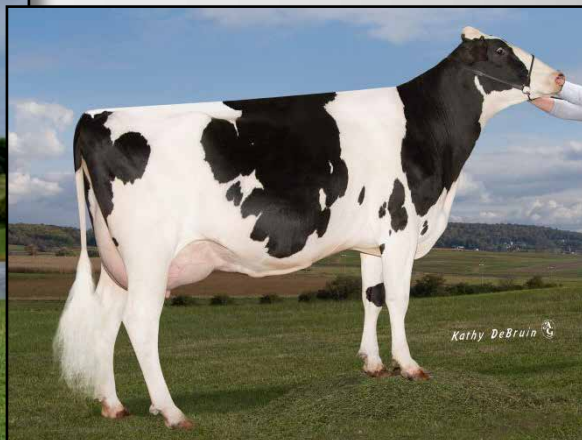
187142 4.6 8543 3.3 6228

Hickorymea Art Penny VG-85 DOM

+2606G, +62 Protein and READY TO FLUSH!



FARNEAR-TBR-BH VICKIE-ET VG-87-2YR
FULL SISTER TO DAM LOT 9



FARNEAR-TBR-BH VARSITY VG-87-2YR DOM
DAM OF LOT 9

LOT 9

PINE-TREE 1610 SUPE 6886

840 3132116738

Born: 25-October-2016

• Showed a good heat 9/27/2016 and is ready to flush for the new owner!

Holstein Plaza Contacts:

Steve Mower +1 240-520-5906
Jennifer Dingbaum +1 320-250-2412
Hendrik Albada +1 240-520-1566

| USA | Milk | Fat | Prot | SCS | DPR | PL | FLC | UDC | PTAT | DCE | NM | GTPI |
|------|-------|-----|------|------|------|------|-----|-------|-------|------|------|-------|
| 8/16 | +1777 | +69 | +62 | 3.00 | +2.7 | +5.3 | +88 | +1.24 | +1.78 | 3.7% | +735 | +2606 |

Cogent Supershot

NLD 755898903 *TV *TL *TY *TD
PTA +2142M +74F +69P 78%R 8/16
PTA +6.8PL 2.75SCS +2.3DPR 4.4%DCE
PTA +.99T +.76UDC +.66FLC 77%R 8/16
GTPI +2634G

Farnear-TBR-BH Varsity-ET

USA 71290935 Very Good-87-2YR DOM
GTPI+2468 +1219M +70F +48P +1.96T
2-03 3x 337d 28300 4.8 1178 3.5 990
3-04 3x 136d 16664 3.5 3.2 inc.
• Several sons at ABS Global, Jetstream, Semex and IPS including Pine-Tree Verona +2733G

Full sister:

Farnear-TBR-BH Vickie VG-87

Several sons in A.I. including:

IHG Victory and IHG Ardent at Jetstream

Seagull-Bay Supersire

USA 69981349 *TV *TL *TY *TD
PTA +2375M +114F +73P 99%R 8/16
PTA +1.32T +.66UDC +.32FLC
GTPI +2657G

Rose Superclass

DEU 536745399 Very Good-88-2YR-NL

Seagull-Bay Supersire

USA 69981349 *TV *TL *TY *TD
PTA +2375M +114F +73P 99%R 8/16
PTA +1.32T +.66UDC +.32FLC
GTPI +2657G

Vision-Gen SH Sho A12037-ET

USA 69517373 Very Good-87-2YR
2-02 2x 305d 26430 3.7 970 3.4 901
• Sons in A.I.

3rd thru 6th Dams

KY-Blue GW Dana-ET EX-91 EX-MS
4-01 2x 185d 16881 4.5 765 3.2 540
BVK Outside Diana-ET EX-92 2E DOM
5-01 2x 365d 31920 3.5 1129 3.2 1034
Life: 1544d 107400 3.5 3708 3.3 3549
Ms Kingstead Chief Adeen-ET
EX-94 2E DOM
3-05 2x 310d 30180 4.0 1209 3.4 1020
Life: 1382d 100760 4.0 4010 3.4 3458
• 2x Member All-American Produce
• Nom All-American Jr 3-Yr Old
• Nom All-American 4-Yr Old
• Dam of 16 VG and 11 EX Offspring
C Aitkenbrae Starbuck Ada EX-94 2E DOM
13-8 2x 365d 25150 3.0 764 3.2 796
2-05 2x 362d 25000 3.6 908 3.2 798
• All-American Produce of Dam 2000
• 1st Eastern Nat'l 3-Yr Old & Grand Ch 1990



LARCREST COLLECT VG-85-2YR VG-MS
DAM OF LOT 10



LARCREST CRIMSON EX-93 2E GMD DOM
3RD DAM OF LOT 10

LOT 10

JEMAR-LLC JEDI COLETTE

840 3127066596

Born: 24-April-2016

Holstein Plaza Contacts:

Steve Mower +1 240-520-5906
Jennifer Dingbaum +1 320-250-2412
Hendrik Albada +1 240-520-1566

| USA | Milk | Fat | Prot | SCS | DPR | PL | FLC | UDC | PTAT | DCE | NM | GTPI |
|------|-------|-----|------|------|------|------|-------|-------|-------|------|------|-------|
| 8/16 | +1496 | +68 | +57 | 2.76 | +1.2 | +5.2 | +1.77 | +2.37 | +2.70 | 3.8% | +752 | +2671 |

S-S-I Montross Jedi-ET

3123886035 *TV *TL *TY *TD
PTA +2497M +84F +81P 77%R 8/16
PTA +899NM\$ +6.3PL 2.96SCS +1.8DPR
PTA +2.15T +1.44UDC +1.90FLC 75%R
GTPI +2806

Larcrest Collect-ET

73679994 Very Good-85-2YR VG-MS
GTPI+2360 +1022M +72F +51P +2.20T
2-01 2x 211d 15420 4.0 616 3.2 480 inc.

Bacon-Hill Montross-ET

71703339 *TV *TL *TY *TD
PTA +2523M +86F +73P 86R 8/16
PTA +2.27T +1.68UDC +2.17FLC
GTPI +2613G

S-S-I Supersire Miri 8679-ET

3011538078 Very Good-88-3RY DOM

Genervations Liquid Gold-ET

11397834C *TV *TL
PTA +491M +65F +45P 95%R 8/16
PTA +1.55T +.94UDC +.47FLC
GTPI +2267G

Larcrest Chenoa-ETS

56264510 Very Good-87 DOM @ 3-00
2-04 2x 365d 35930 4.1 1487 3.5 1259
• Dam of Vekis Chevrolet & Fanatic
• Robust daughter sold for \$90,000
• Maternal sister to Larcrest Cale VG-89

3rd thru 8th Dams

Larcrest Crimson-ET

EX-93 2E GMD DOM
5-02 2x 365d 46390 5.3 2448 3.7 1708
Life: 2233d 195860 4.7 9125 3.8 7396

• Granddam of Commander, Chevrolet, Fanatic and many more!

Larcrest Cosmopolitan VG-87 GMD DOM

2-04 2x 365d 30930 4.1 1261 3.6 1119

Larcrest Oside Champagne-TW

EX-90 GMD DOM
2-03 2x 365d 29110 4.5 1322 3.7 1077

• 17 sons in A.I. worldwide

Larcrest Juror Chanel

EX-93 3E GMD DOM
9-00 2x 365d 48460 4.0 1943 3.4 1648
Life: 2899d 245420 4.3 10482 3.6 8866

Larcrest Lindy Chandra VG-85

2-05 2x 365d 20896 4.8 993 3.8 803

Larcrest Inspiration Carly VG-87

3-05 2x 305d 21800 4.5 973 3.3 802

Fresh, already scored VG-85-2YR & Ready to work!



PINE-TREE MONICA SUELA VG-87-2YR DOM
2ND DAM OF LOT 11



PINE-TREE MONICA PLANETA VG-86 DOM
MATERNAL SISTER DAM OF LOT 11

LOT 11

PINE-TREE 5048 MCCUT 5844

Holstein Plaza Contacts:
Steve Mower +1 240-520-5906
Jennifer Dingbaum +1 320-250-2412
Hendrik Albada +1 240-520-1566

USA 71859422 Born: 5-August-2013 Very Good-85-2YR VG-MS
Fresh 9/2/2016, looks and milking great DONOR DAM
Dam of 202HO01632 Pine-Tree Tairon at Masterrind

| USA | Milk | Fat | Prot | SCS | DPR | PL | FLC | UDC | PTAT | DCE | NM | GTPI |
|------|-------|-----|------|------|------|------|-------|-------|-------|------|------|-------|
| 8/16 | +1142 | +42 | +53 | 3.03 | +0.5 | +3.1 | +1.86 | +2.03 | +2.30 | 4.0% | +539 | +2426 |

De-Su Bkm McCutchen-ET
69990138 *TV *TL *TY *TD
PTA +961M +55F +34P 99%R 8/16
PTA +2.8PL 2.84SCS -.3DPR 3.4%DCE
PTA +3.23T +2.91UDC +2.72FLC 99%R
GTPI +2468G

Pine-Tree 1825 Alto 5048-ET
USA 70782060 Very Good-85 VG-MS
1-10 3x 305d 29680 4.0 1193 3.5 1030
3-02 3x 365d 37410 4.1 1525 3.6 1353

De-Su 521 Bookem-ET
66636657 *TR *TV *TL *TY *TD
PTA +1311M +30F +48P 99R 8/16
PTA +1.59T +1.10UDC +1.14FLC
GTPI +2342G

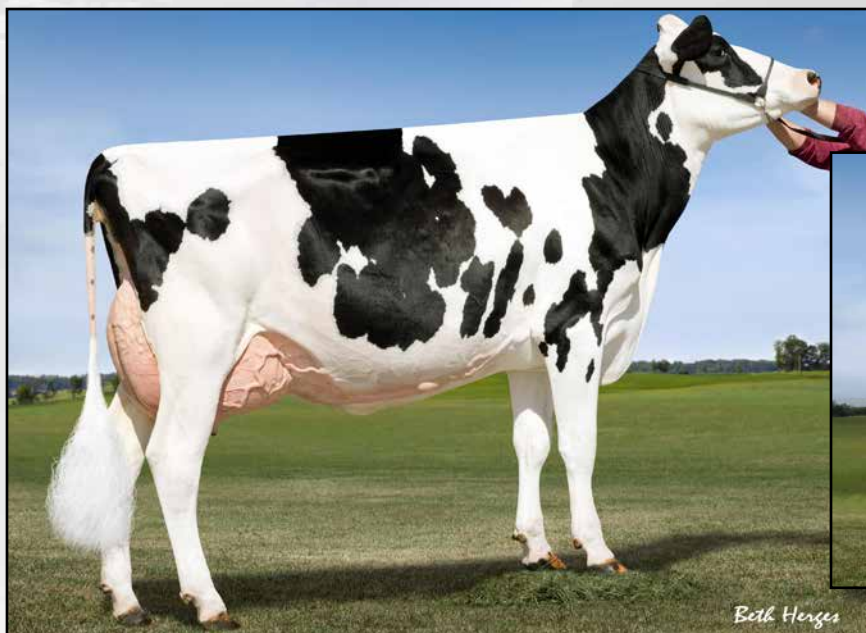
Sully Shottle May-TW
138218285 Excellent-91 2E DOM
Life: 1516d 159250 3.5 5632 3.3 5191

Bo-Irish Alton-ET
USA 131102143 *CV *TL
PTA +1207M +34F +39P 99%R 8/16
PTA -.27T -.23UDC -.11FLC
GTPI +1917G

Pine-Tree Monica Suele-ET
USA 62848061 Very Good-87-2YR DOM
1-11 3x 305d 27630 3.4 935 3.4 927

3rd thru 8th Dams
Pine-Tree Missy Monica-ET
VG-85 GMD DOM
4-11 3x 305d 36010 3.5 1248 3.1 1103
Wesswood-HC Rudy Missy-ET
EX-92 3E DOM
4-11 3x 365d 40880 4.1 1665 3.2 1308
Life: 1262d 119610 4.1 4885 3.2 3804
Wesswood Elton Mimi EX-90 GMD DOM
3-05 2x 365d 35380 3.3 1160 3.2 1121
Wesswood Mandingo Ivy VG-87 VEEVV
6-05 2x 365d 36330 3.6 1305 3.0 1087
Life: 1835d 144060 3.4 4933 3.1 4412
Wesswood Astro Matt Esther
VG-87 GMD DOM
6-08 2x 365d 31860 3.5 1125 3.1 982
Life: 1847d 140110 3.6 5029 3.2 4424
Wesswood Bell Claudette
VG-87 GMD DOM
9-10 2x 365d 38810 3.6 1383 2.9 1140
Life: 3634d 280980 3.6 9997 3.1 8625

Very Complete Supershot, ready to IVF!



Both Henges

S-S-I SNOWMAN RACHEL7516-ET VG-88 DOM
2ND DAM OF LOT 12

MACLAND SS RAINBOW 4234
SELLS AS LOT 12

LOT 12

MACLAND SS RAINBOW 4234-ET

840 3126231458

Born: 11-March-2016

Bred: August 26, 2016 to Bacon-Hill Pety Modesty (Sexed) - confirmed preg

Holstein Plaza Contacts:

Steve Mower +1 240-520-5906
Jennifer Dingbaum +1 320-250-2412
Hendrik Albada +1 240-520-1566

| USA | Milk | Fat | Prot | SCS | DPR | PL | FLC | UDC | PTAT | DCE | NM | GTPI |
|------|-------|-----|------|------|------|------|-------|-------|-------|------|------|-------|
| 8/16 | +1313 | +63 | +49 | 2.75 | +2.3 | +4.9 | +2.06 | +1.60 | +2.00 | 5.0% | +671 | +2560 |

Cogent Supershot

NLD 755898903 *TV *TL *TY *TD
PTA +2142M +74F +69P 78%R 8/16
PTA +6.8PL 2.75SCS +2.3DPR 4.4%DCE
PTA +.99T +.76UDC +.66FLC 77%R 8/16
GTPI +2634G

S-S-I Uno Rapa 8431-ET

840 3011001335 Very Good-86-2YR VG-MS
2-04 2x 305d 21710 4.6 997 3.5 763

Seagull-Bay Supersire

USA 69981349 *TV *TL *TY *TD
PTA +2375M +114F +73P 99%R 8/16
PTA +1.32T +.66UDC +.32FLC
GTPI +2657G

Rose Superclass

DEU 536745399 Very Good-88-2YR-NL

Amighetti Numero Uno-ET

ITA 17990915143 *TV *TL *TY *TD
PTA -372M +59F +3P 99%R 8/16
PTA +2.46T +2.30UDC +1.64FLC
GTPI +2397G

S-S-I Snowman Rachel7516-ET

840 3008328914 Very Good-88 DOM
2-05 2x 365d 37400 3.6 1333 3.2 1199

3rd thru 11th Dams

Roylane Socra Mira 1760-ET

EX-91 DOM

3-11 3x 365d 44443 4.0 1832 3.3 1385

• Dam of Mayflower at Select Sires

• Full sister to Robust at Select Sires

Seagull-Bay Oman Mirror-ET VG-86 DOM

3-00 2x 365d 36431 4.4 1605 3.6 1303

Seagull-Bay Manat Mirage-ET EX-90 DOM

3-06 3x 365d 35900 3.8 1364 3.2 1161

Lynmead Celsius Minnow-ET

EX-91 2E GMD DOM

4-10 3x 365d 49550 3.7 1857 3.2 1592

Life: 2626d 255910 3.7 9446 3.3 8481

CMV Melwood Mindy-ET VG-85 DOM

4-01 2x 365d 36340 3.6 1306 3.4 1238

Briarpatch-R Misty VG-85 GMD DOM

3-08 2x 365d 24690 4.1 1011 3.2 794

Rilara Mars Las Ravenna EX-91 GMD DOM

4-03 2x 305d 29030 4.6 1330

Rilara Haven Charming Las-Twin VG-87 GMD

6-10 2x 365d 30490 3.4 1029 2.9 877

Life: 2442d 164400 3.4 5651 2.9 2051

Rag Apple Locust Grove Charm VG-86

5-02 2x 365d 26320 3.6 948

POLLED, Different Sire Stack & Ready to WORK!



GOLDEN-OAKS OBSRVR DIXIE-ET EX-90
2ND DAM OF LOT 13



REGANCREST S DASHE VG-88
4TH DAM OF LOT 13

LOT 13

MS HARTFORD MADRON 683 *PO

USA 74261058

POLLED

Born: 16-November-2015

Holstein Plaza Contacts:

Steve Mower +1 240-520-5906
Jennifer Dingbaum +1 320-250-2412
Hendrik Albada +1 240-520-1566

| USA | Milk | Fat | Prot | SCS | DPR | PL | FLC | UDC | PTAT | DCE | NM | GTPI |
|------|-------|-----|------|------|------|------|-------|-------|-------|------|------|-------|
| 8/16 | +1096 | +40 | +47 | 2.85 | +1.9 | +3.3 | +1.42 | +1.19 | +1.47 | 6.2% | +527 | +2359 |
| DEU | Milk | Fat | Prot | RZM | RZS | RZR | RZN | FLC | UDC | RZE | RZD | RZG |
| 8/16 | +1050 | +54 | +49 | 135 | 109 | 112 | 119 | 122 | 125 | 129 | 106 | 147 |

Hendel Mr Madron-ET

840 3012011779 *TV *TL *TY *TD
PTA +1535M +40F +51P 79%R 8/16
PTA +5.9PL 2.62SCS +.2DPR 8.6%DCE
PTA +1.62T +1.75UDC +1.25FLC 78%R 8/16
GTPI +2418G

Kerndtway Ehrdt Dallas-ET

USA 69502424 Good Plus-82
2-07 2x 289d 24290 4.5 1082 3.5 850
• Fresh again and looks good!
• Full siter to Kerndtway Kingpin and Kerndtway Eraser-P at Select Sires

De-Su altaJackman-ET

USA 70625846 *TV *TL *TY *TD
PTA +838M +21F +37P 99%R 8/16
PTA +1.27T +1.58UDC +1.60FLC
GTPI +2266G

Hendel Grafeti Mira 3453-ET

69937280 Very Good-85
3-11 2x 305d 33550 3.7 1239 3.3 1092

Da-So-Burn MOM Earnhardt P

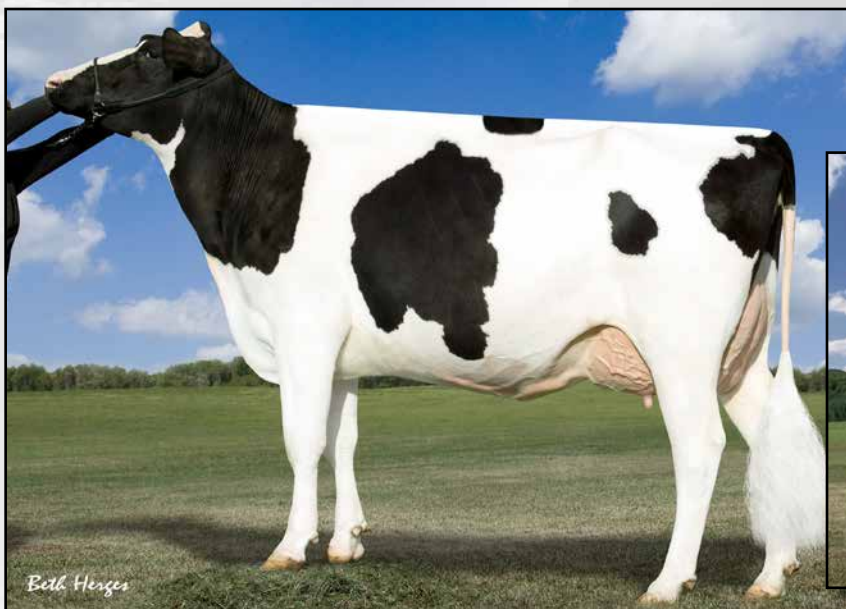
USA 68972328 *TR *PO *TV *TL *TY
PTA +1376M +39F +62P 99%R 8/16
PTA +.71T -.11UDC +.21FLC 98%R
GTPI +2114G

Golden-Oaks Obsrvr Dixie-ET

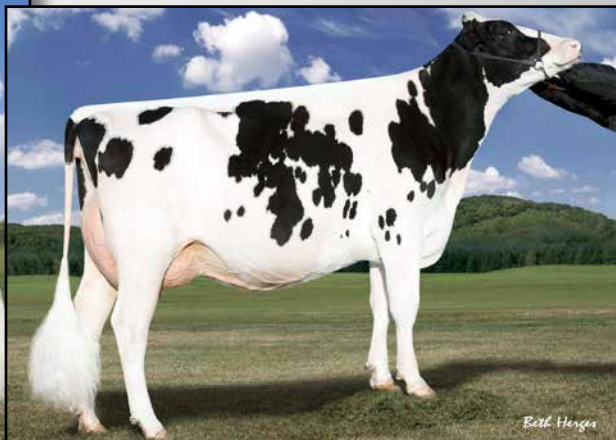
USA 69823260 Excellent-90 EX-MS DOM
2-00 2x 365d 28290 3.9 1102 3.3 936

3rd thru 14th Dams

Regancrest S Dashe VG-88 VG-MS
2-01 3x 305d 26350 3.7 984 3.2 856
Premier-RCF G Dasie
EX-92 EEEEE GMD
3-03 2x 365d 35990 4.4 1355 3.4 1217
Life: 1334d 115860 4.3 4993 3.5 4087
Ernlo Daisy Jane
EX-93 EEVEE GMD DOM
4-06 365d 40960 4.2 1706 3.4 1400
Life: 152370 4.1 6276 3.5 5257
Kerndtway Jolt Daisy
EX-94 2E GMD DOM
Life: 139990 4.2 5895 3.3 4571
Kerndway Bstar Dime EX-90 GMD DOM
Life: 167130 4.2 6978 2.9 4917
Kerndtway Dollar Enhancer VG-88
3-04 365d 31270 3.8 1182 3.1 974
Al-Man Bell Julie VG-87 GMD DOM
3-04 2x 365d 31270 3.4 1005 3.1 906
Al-Man Mars Julliet EX-90
5-11 2x 365d 29610 3.4 1005 3.1 906
Al-Man Apollo Jessie VG-85
Al-Man Massman Commander Julie VG-85
Massman June Standout VG-85
Al-Man Jewel Homestead VG-87



LARCREST CHENOA-ETS VG-87-2YR DOM
2ND DAM OF LOT 14



LARCREST CRIMSON EX-93 2E GMD DOM
3RD DAM OF LOT 14

LOT 14

CHOICE - CHARLOTTE OR CONQUER

Holstein Plaza Contacts:

Steve Mower +1 240-520-5906
Jennifer Dingbaum +1 320-250-2412
Hendrik Albada +1 240-520-1566

JEMAR-LLC JEDI CHARLOTTE-ET

840 3127066594 Born: 24-April-2016

| USA | Milk | Fat | Prot | SCS | DPR | PL | FLC | UDC | PTAT | NM | GTPI |
|------|-------|-----|------|------|------|------|-----|-------|-------|------|-------|
| 8/16 | +1566 | +81 | +61 | 2.90 | +0.5 | +4.9 | +86 | +1.80 | +1.89 | +757 | +2596 |

JEMAR-LLC JEDI CONQUER-ET

840 3127066587 Born: 9-June-2016

| USA | Milk | Fat | Prot | SCS | DPR | PL | FLC | UDC | PTAT | NM | GTPI |
|------|-------|-----|------|------|------|------|-------|-------|-------|------|-------|
| 8/16 | +1525 | +60 | +62 | 2.78 | +1.6 | +5.7 | +1.27 | +1.58 | +1.81 | +725 | +2590 |

S-S-I Montross Jedi-ET

3123886035 *TV *TL *TY *TD
PTA +2497M +84F +81P 77%R 8/16
PTA +899NM\$ +6.3PL 2.96SCS +1.8DPR
PTA +2.15T +1.44UDC +1.90FLC 75%R
GTPI +2806

Larcrest Collect-ET

73679994 Very Good-85-2YR VG-MS
GTPI+2360 +1022M +72F +51P +2.20T
2-01 2x 211d 15420 4.0 616 3.2 480 inc.

Bacon-Hill Montross-ET

71703339 *TV *TL *TY *TD
PTA +2523M +86F +73P 86R 8/16
PTA +2.27T +1.68UDC +2.17FLC
GTPI +2613G

S-S-I Supersire Miri 8679-ET

3011538078 Very Good-88-3RY DOM

Genervations Liquid Gold-ET

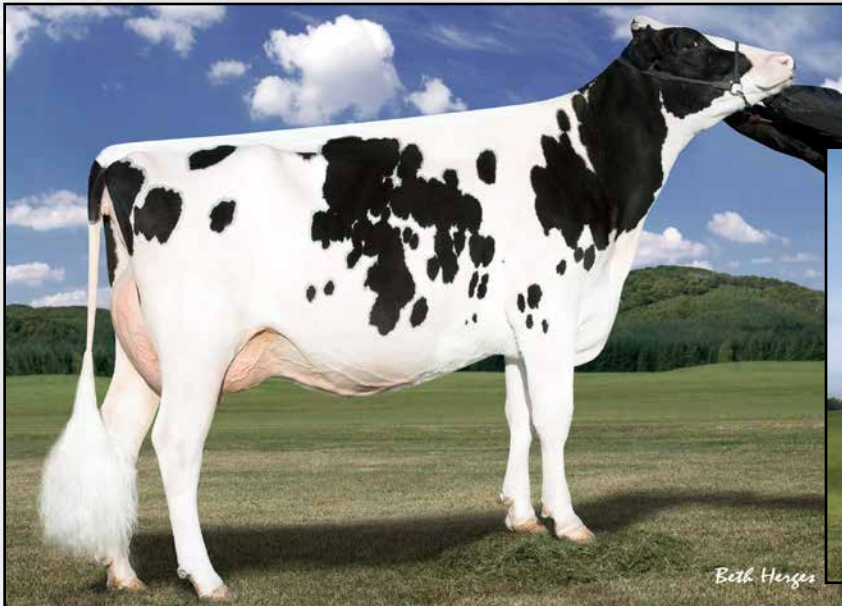
11397834C *TV *TL
PTA +491M +65F +45P 95%R 8/16
PTA +1.55T +.94UDC +.47FLC
GTPI +2267G

Larcrest Chenoa-ETS

56264510 Very Good-87 DOM @ 3-00
2-04 2x 365d 35930 4.1 1487 3.5 1259
• Dam of Vekis Chevrolet & Fanatic
• Robust daughter sold for \$90,000
• Maternal sister to Larcrest Cale VG-89

3rd thru 8th Dams

Larcrest Crimson-ET
EX-93 2E GMD DOM
5-02 2x 365d 46390 5.3 2448 3.7 1708
Life: 2233d 195860 4.7 9125 3.8 7396
• Granddam of Commander, Chevrolet, Fanatic and many more!
Larcrest Cosmopolitan VG-87 GMD DOM
2-04 2x 365d 30930 4.1 1261 3.6 1119
Larcrest Oside Champagne-TW
EX-90 GMD DOM
2-03 2x 365d 29110 4.5 1322 3.7 1077
• 17 sons in A.I. worldwide
Larcrest Juror Chanel
EX-93 3E GMD DOM
9-00 2x 365d 48460 4.0 1943 3.4 1648
Life: 2899d 245420 4.3 10482 3.6 8866
Larcrest Lindy Chandra VG-85
2-05 2x 365d 20896 4.8 993 3.8 803
Larcrest Inspiration Carly VG-87
3-05 2x 305d 21800 4.5 973 3.3 802



LARCREST CRIMSON EX-93 2E GMD DOM
2ND DAM OF LOT 15



LARCREST SUPERSHOT 3526
SELLS AS LOT 15

LOT 15

LARCREST SUPERSHOT 3526-ET

Holstein Plaza Contacts:

Steve Mower +1 240-520-5906
Jennifer Dingbaum +1 320-250-2412
Hendrik Albada +1 240-520-1566

USA 143269652

Born: 21-February-2015

Bred: August 31, 2016 to S-S-I Montross Jedi (Sexed) - confirmed preg

| USA | Milk | Fat | Prot | SCS | DPR | PL | FLC | UDC | PTAT | DCE | NM | GTPI |
|------|------|-----|------|------|------|------|-------|-------|-------|------|------|-------|
| 8/16 | +957 | +64 | +43 | 2.62 | +1.2 | +5.1 | +1.36 | +2.02 | +2.34 | 6.2% | +663 | +2538 |

Cogent Supershot

NLD 755898903 *TV *TL *TY *TD
PTA +2142M +74F +69P 78%R 8/16
PTA +6.8PL 2.75SCS +2.3DPR 4.4%DCE
PTA +.99T +.76UDC +.66FLC 77%R 8/16
GTPI +2634G

Larcrest Charmed-ET

140074019 Very Good-86 VG-MS
GTPI+2343 -474M +58F +11P +2.33T

Seagull-Bay Supersire

USA 69981349 *TV *TL *TY *TD
PTA +2375M +114F +73P 99%R 8/16
PTA +1.32T +.66UDC +.32FLC
GTPI +2657G

Rose Superclass

DEU 536745399 Very Good-88-2YR-NL

Amighetti Numero Uno-ET

ITA 17990915143 *TV *TL *TY *TD
PTA -372M +59F +3P 99%R 8/16
PTA +2.46T +2.30UDC +1.64FLC
GTPI +2397G

Larcrest Crimson-ET

Excellent-93 2E GMD DOM
5-02 2x 365d 46390 5.3 2448 3.7 1708
6-10 2x 365d 39260 4.1 1609 3.6 1409
Life: 2233d 195860 4.7 9125 3.8 7396
• Granddam of Commander, Chevrolet,
Fanatic and many more!

3rd thru 7th Dams

Larcrest Cosmopolitan VG-87 GMD DOM
2-04 2x 365d 30930 4.1 1261 3.6 1119
Larcrest Oside Champagne-TW
EX-90 GMD DOM
2-03 2x 365d 29110 4.5 1322 3.7 1077
• 17 sons in A.I. worldwide
Larcrest Juror Chanel
EX-93 3E GMD DOM
9-00 2x 365d 48460 4.0 1943 3.4 1648
Life: 2899d 245420 4.3 10482 3.6 8866
Larcrest Lindy Chandra VG-85
2-05 2x 365d 20896 4.8 993 3.8 803
Larcrest Inspiration Carly VG-87
3-05 2x 305d 21800 4.5 973 3.3 802



TERMS AND CONDITIONS

GENERAL:

1. These terms are valid for all agreements made through this sale.
2. The organization of the sale is done by Holstein Plaza, part of and a trade name of AMS Genetics International LLC which will be referred to as the "Auction Company". Auction Company includes its agents, employees, officers, members and directors.
3. The party, which offers animals in this sale will be named after this as the "seller" and the party who buys through this sale and gets the sale item assigned, will be hereinafter identified as the "buyer".
4. The Auction Company is only acting as and will only act as an intermediary of an agreement between seller and buyer.
5. Days means business days and excludes weekends, but does not exclude holidays.

HOW DOES THE SALE WORK:

1. This is a traditional English auction, which starts low and allows bidders to place progressively higher bids.
2. Each lot closes at staggering times at the times designated for the auction on the website or circular applicable to this auction and the highest bidder then wins the lot.
3. All lots sell with reasonable starting bid.
4. When you place a bid, you agree to pay for the item if you're the winning bidder.
5. There are two ways of bidding - either directly through the internet (www.holsteinplaza.com) or by contacting one of the sale staff members listed.
6. All bids are made in U.S. dollars.
7. When you place a bid, you enter the maximum amount you're willing to pay for the lot. The other bidders and the seller will not be able to see your maximum bid. Through this Proxy bidding system, the Holstein Plaza auction system will increase your bid to the next lowest price when another user bids on the same item. The proxy bidding process continues until your maximum bid amount is reached or the auction ends. Every bidder is bound to his bid.
8. The sale is using the popcorn bid system/5-minute rule. Until that moment bids will be accepted.
9. On disputes, which may arise during the sale, the Auction Company decides such disputes. The sale shall be governed by the rules of Maryland Law, excluding its choice of law provisions. Buyer and Seller consent to personal jurisdiction and exclusive jurisdiction in the courts of the State of Maryland located in Washington County, Maryland.
10. The Auction Company will coordinate the paperwork and transfers.

PAYMENT:

1. Full payment for purchase is due to the Auction Company within 10 business days of the sale, no exceptions. The ownership stays with the seller until the complete payment of the invoiced amount has been received.
2. Sale invoices will be sent via e-mail or fax following the conclusion of the sale.
3. All live animals must be picked up or arrangements made with 20 days from the date of sale; this is the responsibility of the buyer. No cattle will be released to buyer until payment has been made. After 20 days, seller is entitled to \$5.00 per day board and a monthly interest fee of 1%.
4. Upon purchase the buyer takes over all risks after 10 days from the sale. The calf must be paid for on or within 10 days after the buyer received the invoice. Regardless of whether buyer makes timely payment, buyer is responsible for all risks after 10 days from the sale and should buy appropriate insurance.
5. The payment should be made as mentioned on the invoice.
6. Claims need to be made in writing to the seller within eight days after delivery to the buyer with a copy to the Auction Company.

EXCLUDING LIABILITY:

1. The Auction Company cannot be held responsible for errors on the internet site, sale catalog or in the advertisements.
2. The Auction Company cannot be held responsible for visual or non-visual representations regardless the size or nature of such defect of the animals sold.
3. The Auction Company does not take and will not have any responsibility for damage to persons or property, which may arise or have arisen because of or connected to the sale.
4. The cow indexes mentioned therein have been calculated or con-

verted by the herdbook in the country the donor cow is housed in accordance with the current methods. All official pedigrees of sale animals can be requested.

5. The Auction Company for the sale can never be held responsible for the bull and embryo contracts supplied with the sale items. The responsibility of the contract is entirely that of the organization supplying the contract, usually the seller.
6. The Auction Company can never be held responsible in case the embryos cannot be exported no matter what reason.
7. Any special terms must be communicated to the Auction Company in a reasonable manner to enable bidders to be notified, so that bidder notifications can occur prior the start of the auction.

TERMS FOR FIRST CHOICES:

1. First choice is the selection of resulting offspring from listed pregnancies mentioned on the catalog page. Terms are as follows: 25% down within 10 days of sale; balance on possession when youngest choice reaches four months of age. Seller will provide 9K genomic testing of all resulting calves prior to selection, at buyer's request. All sales are final including purchase of first choice females; successful bidder/buyer is responsible for first and second payment.
2. Seller to pay all necessary registry and other applicable fees to obtain registry certificate
3. Seller entitled to \$5.00 per day board after 4 months, based on age of youngest calf born in the group from which the selection is made.
4. Should a female chosen from the respective flush fail to meet breeding guarantees, or should for any reason a female not result from a respective flush, the following steps will be taken to fulfill the purchase agreement:
 - i. Seller will offer choice of remaining ETs from the respective flush
 - ii. If, and only if, the above cannot be resolved, a full refund will be made on all payments. Disappointing genomic test results will not be accepted as a reason to cancel the purchase.
5. If a full refund is to be made pursuant to paragraph 4, Auction Company will refund, and only be responsible to refund, any commission received; any claim for the remainder of the purchase price paid by the buyer is solely a direct claim against the seller only. If Auction Company is still holding proceeds from the buyer, and there is any dispute in returning the funds to seller, Auction Company may interplead such funds and deduct any attorney's fees and expenses for the cost of such interpleader action.

WARRANTIES:

1. Each seller warrants clear title to the animal or lot, and the right to sell same.
2. To the best of the seller's knowledge, each animal is sound and healthy in every respect. Every precaution will be taken to represent the physical condition of each lot exactly as it is known. Heifers that have never calved are in no way guaranteed as to the condition of their udders following calving.
3. Breeding Warranty: The seller guarantees all animals to be breeders, but not beyond the purchase price, with the following understanding:
 4. Females--Any female when sold that has freshened within 90 days prior to the date of the sale is, by that fact, considered a breeder. Should any other female when fresh over 90 days fail to become pregnant within four months of sale date, or if less than eighteen months old when sold, fails to become pregnant by the time she reaches the age of 21 months, after having been bred to a bull known to be a breeder and after having been examined or treated by a licensed veterinarian, the matter shall be reported in writing to the seller within three months of the stated limit. The seller shall then have the privilege of four months' time in which to prove the animal a breeder by service to a registered Holstein bull before refunding the purchase price or making other settlement satisfactory to the buyer.
 5. Females bred when sold and pronounced in calf are presumed to be pregnant but pregnancy is not guaranteed. The seller makes no warranty that pregnant cows or heifers will deliver calves or that they will carry calves full term. If, after the sale embryos or oocytes are recovered from a female or an attempt is made to superovulate her, this negates the breeding warranty unless there is a separate written agreement between buyer and seller.

24/7

Now Open!



SHOPEMBRYO.COM 



YOUR SOURCE FOR THE BEST NORTH AMERICAN & EUROPEAN GENETICS



Lorem ipsum dolor sit amet, consectetur adipiscing elit, sed do eiusmod tempor incididunt ut labore et dolore magna aliqua.



Lorem ipsum dolor sit amet, consectetur adipiscing elit, sed do eiusmod tempor incididunt ut labore et dolore magna aliqua.



Lorem ipsum dolor sit amet, consectetur adipiscing elit, sed do eiusmod tempor incididunt ut labore et dolore magna aliqua.



Lorem ipsum dolor sit amet, consectetur adipiscing elit, sed do eiusmod tempor incididunt ut labore et dolore magna aliqua.

NOW OPEN YOUR 24-HOUR EMBRYO WEBSHOP
SHOPEMBRYO.COM



